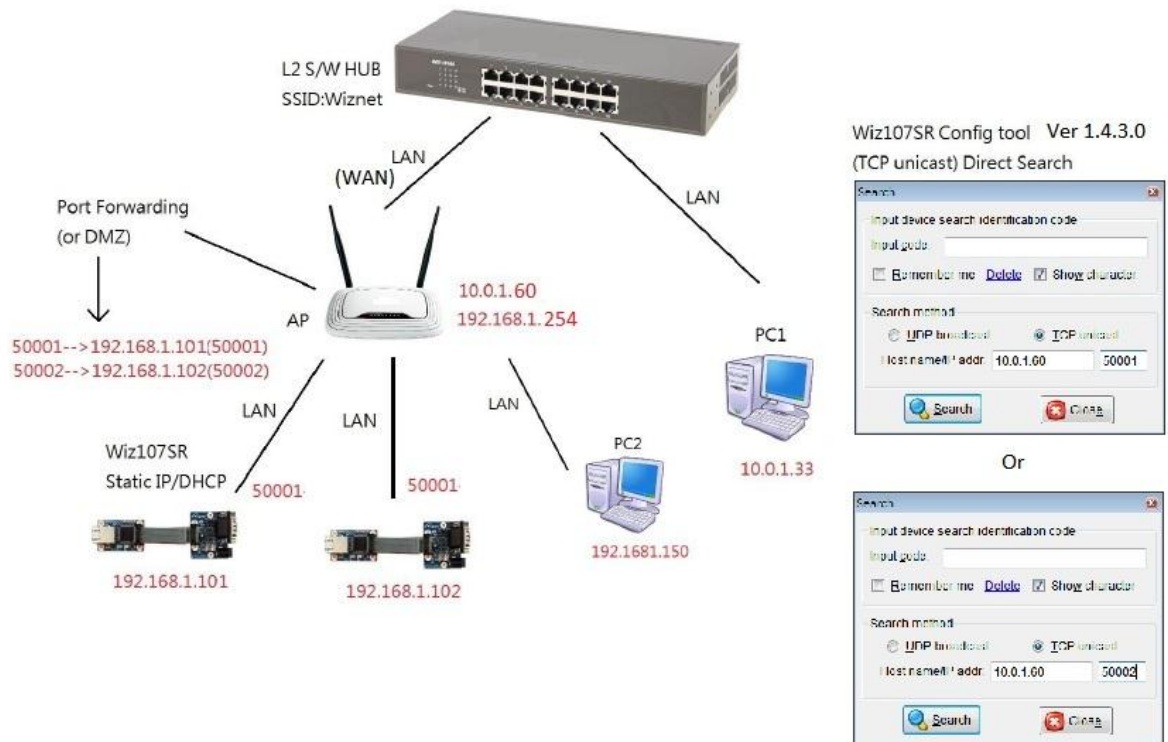


Private IP & Public IP network Application Note_Mult-Wiz107SR

1. Direct Search, With AP (Search 107 using AP's Port forwarding)

1.1. Diagram



1.2. Configuration

Port Forwarding Setting

WLAN Gateway Module....

Port Forwarding

It shows current port forwarding information and user can add/delete forwarding rules. User can add maximum 32 rules

Port Forwarding

Port Forwarding: Enable

IP Address: []

Service Port: []

Protocol: TCP&UDP

Internal Port: []

Comment: []

Save

Applied Port Forwarding Rules

No.	IP Address	Service Port	Protocol	Internal Port	Comment
1	192.168.1.101	50001 - 50001	TCP + UDP	50001	
2	192.168.1.102	50002 - 50002	TCP + UDP	50001	

Delete Selected

->PC 2 enter the AP webpage(192.168.1.254) to set the port forwarding, then it set the service port and IP address in the AP webpage. In Wiznet Internal Port are **50001**. Please note that the AP has port forwarding or DMZ function.

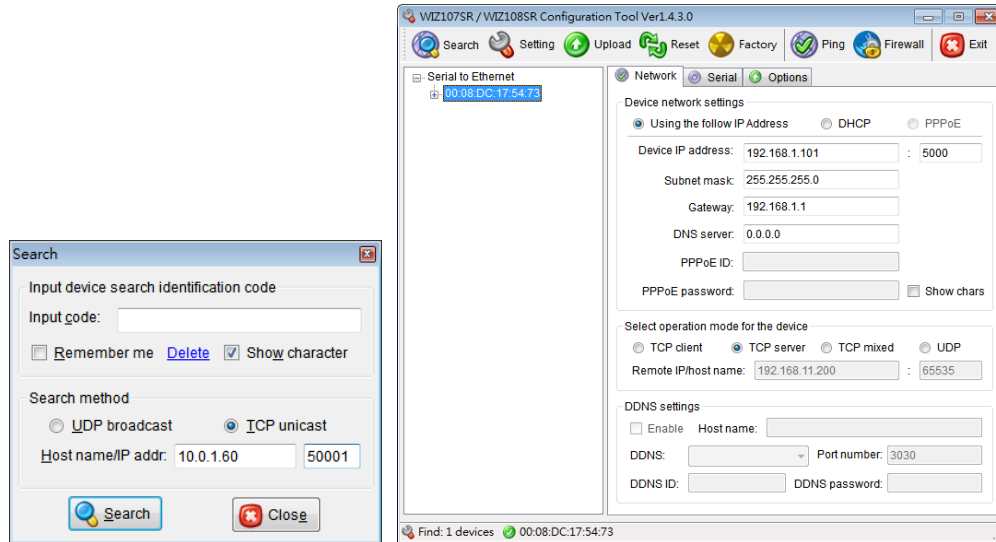
For example, Wiz107SR (Module A) IP address is 192.168.1.101. The service port is 50001-50001 and internal port is 50001. Wiz107SR (Module B) IP address is 192.168.1.102. The service port is 50002-50002 and internal port is 50001.

Open the ConfigTool WIZ107&108SR Ver 1.4.3.0



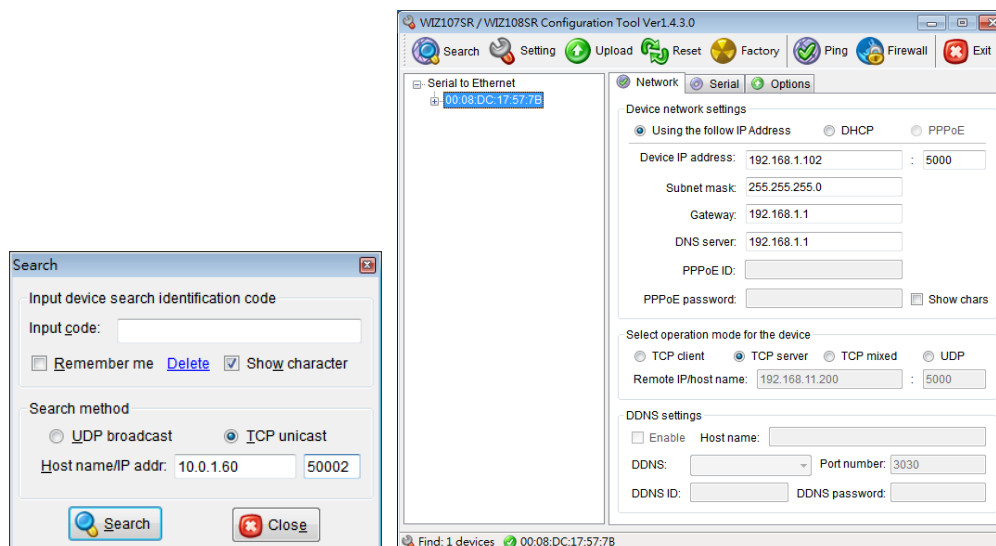
Wiz107SR (Module A)

Use the TCP unicast direct Search, and then enter AP IP address (10.0.1.60) and service port 50001 to search the Wiz107SR (Module A). At a result, IP address is 192.168.1.101 to display in configuration tool.



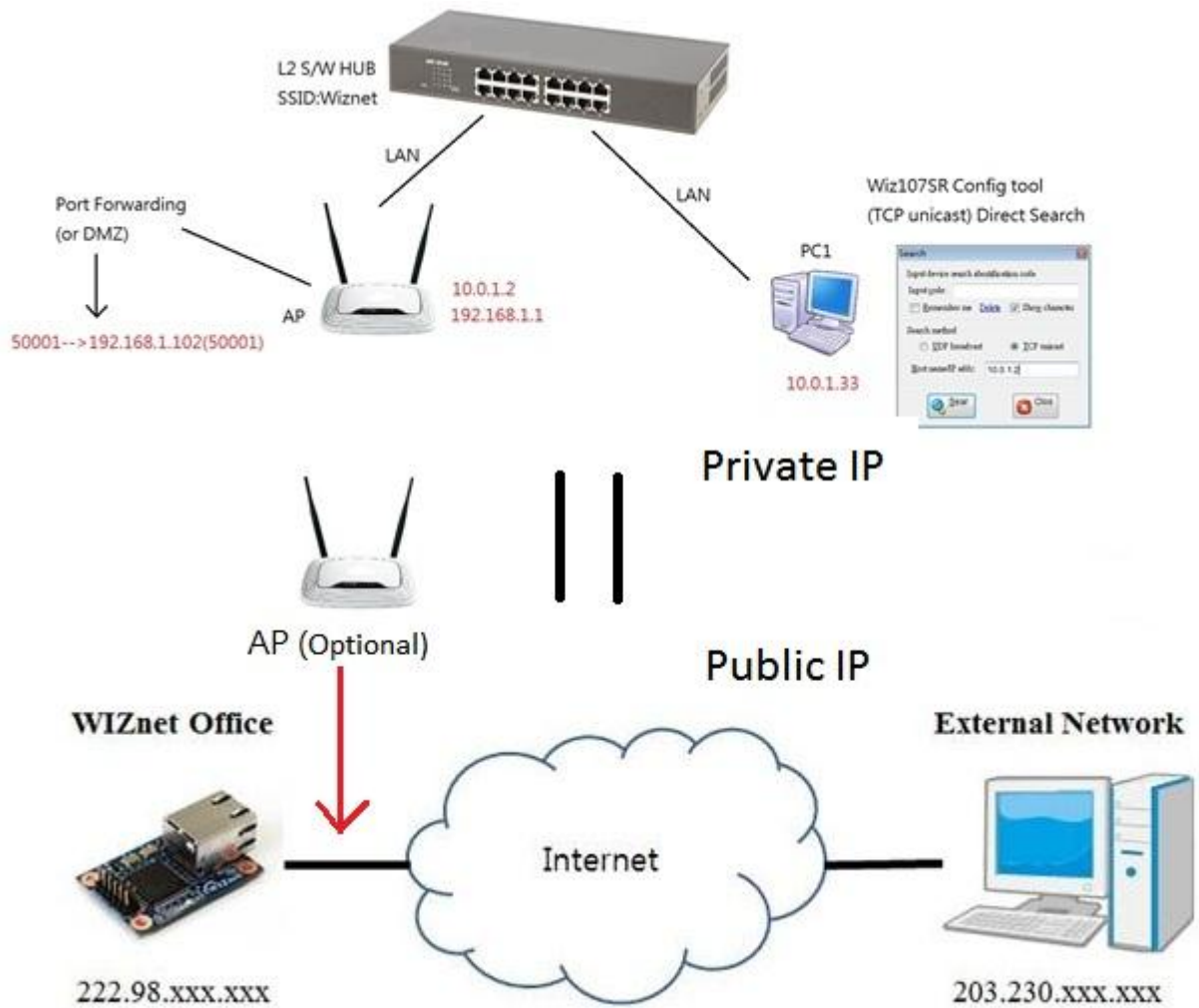
Wiz107SR (Module B)

Use the TCP unicast direct Search, and then enter AP IP address (10.0.1.60) and service port 50001 to search the Wiz107SR (Module A). At a result, IP address is 192.168.1.102 to display in configuration tool.



2. Direct Search, With AP (Public IP and Private IP is the same saturation)

2.1. Diagram



2.2. Configuration

Since Internet is equal to L2 S/W HUB.

The Private IP 10.0.1.2 and 10.0.1.33 can change to Public IP 222.98.xxx.xxx and 203.230.xxx.xxx.

Please check your public IP of your AP and PC.