

# APPROVAL SHEET

To :

Customer P/N :

UDE P/N : SZ10-MY-0004

Description : QSFP28 Cage 1X1(Style A)

Press-fit

With Lightpipe & heatsink

Packing With Tray

QSFP28 100G(NRZ), SFP56 200G(PAM4)



Spec No.  
SZ1022007-00

Update Date  
2022/7/29

Revision  
A

Approved	Checked	Prepared



湧德電子 股份有限公司  
UDE Corp.

桃園市(33852) 蘆竹區內溪路 68 巷13號

No.13, Ln. 68, Neixi Rd., Luzhu Dist., Taoyuan City (33852), Taiwan

TEL: 886-3-3242000 FAX: 886-3-3246611

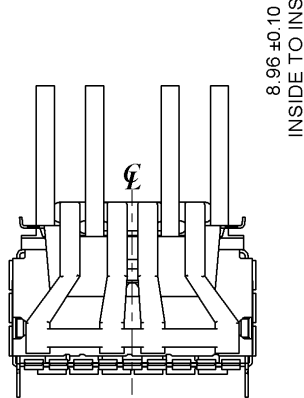
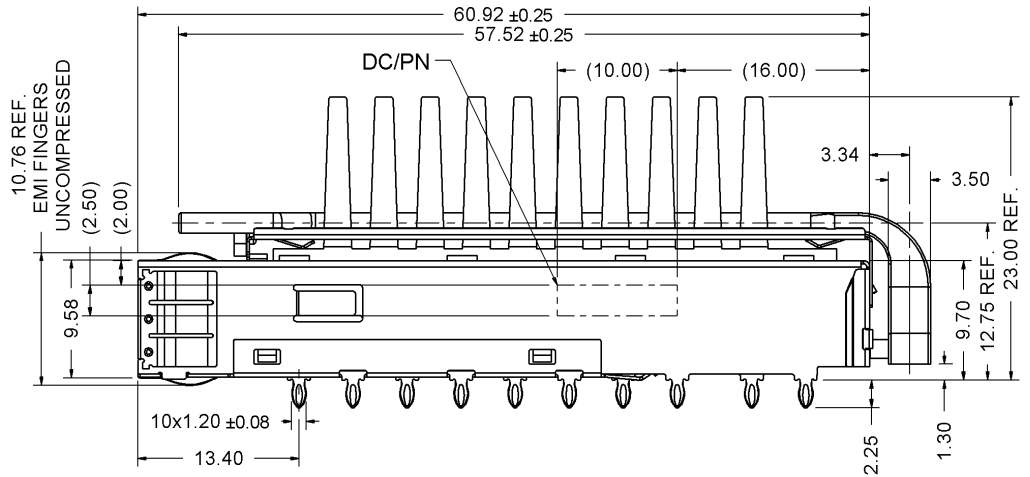
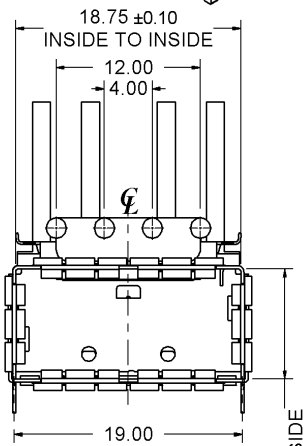
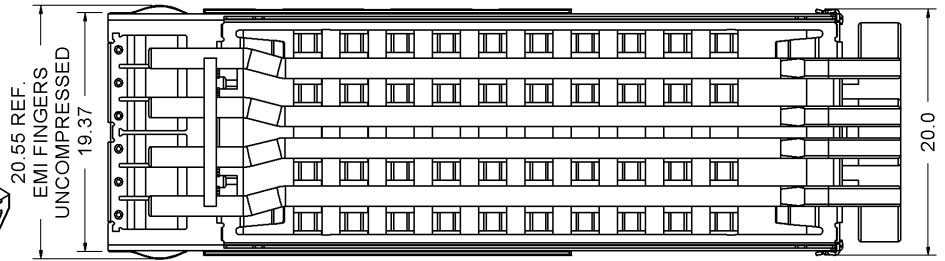
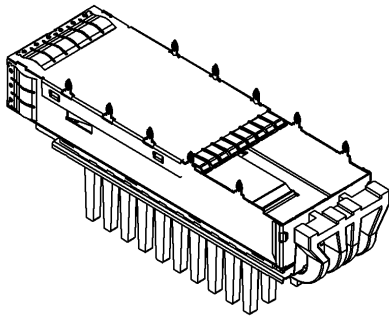
<http://www.ude-corp.com/>



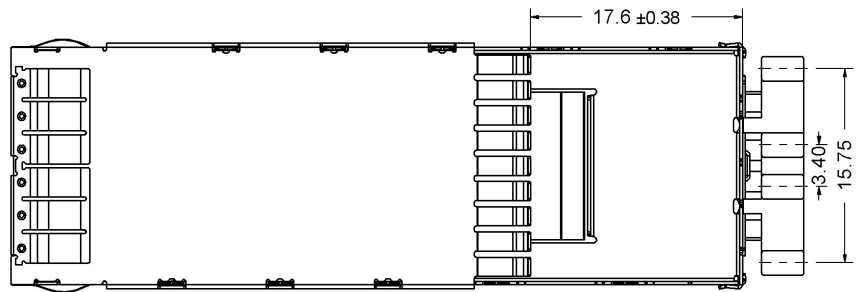
1. MECHANICAL DIMENSION

Product Dimension

Unit:mm	General Tolerance :	X.X : ± 0.38
		X.XX : ± 0.20



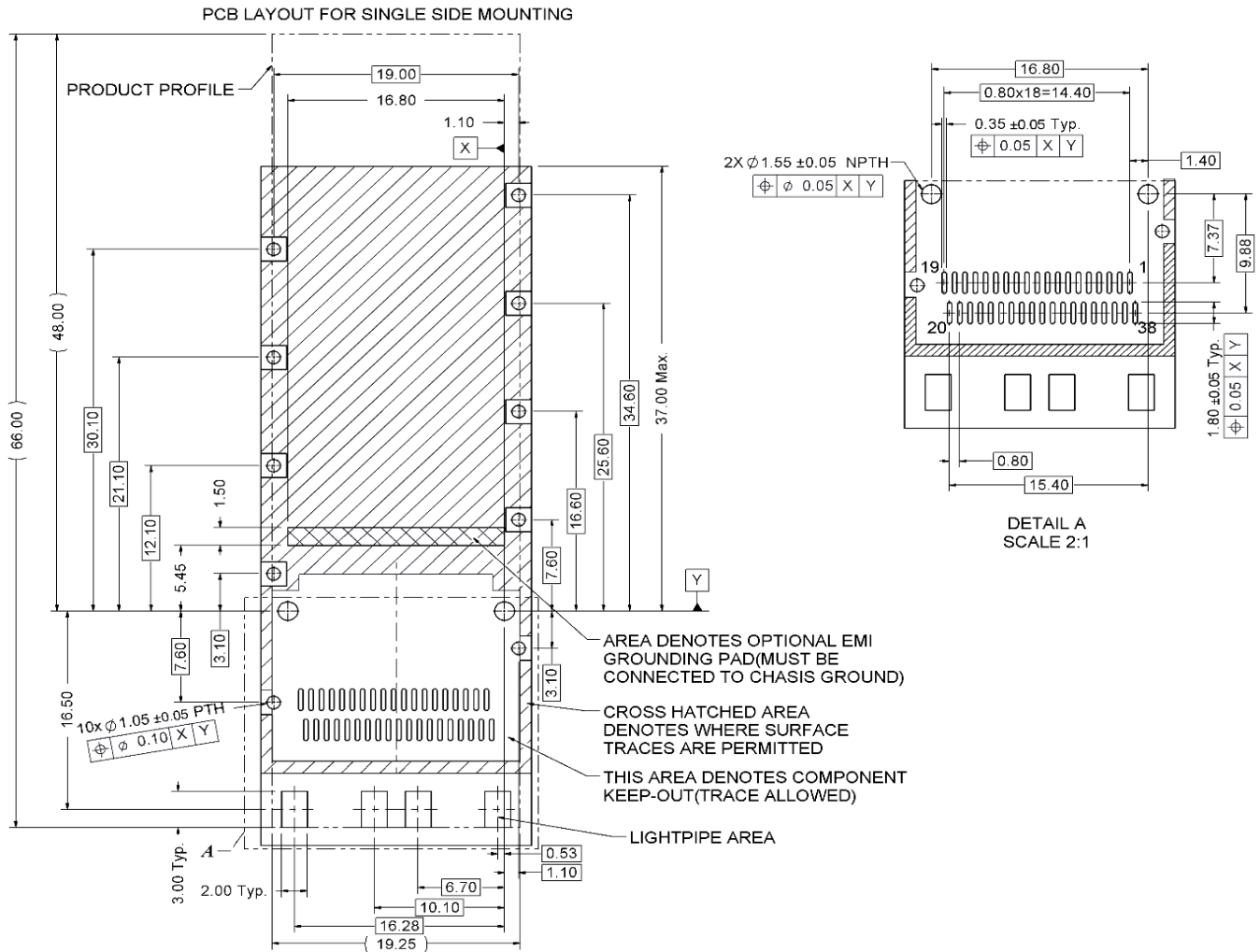
RIGHT VIEW



2. Recommended PCB Layout.Component Side of Board

All dimension units are "mm".

All dimension tolerances are ±0.05mm unless otherwise specified



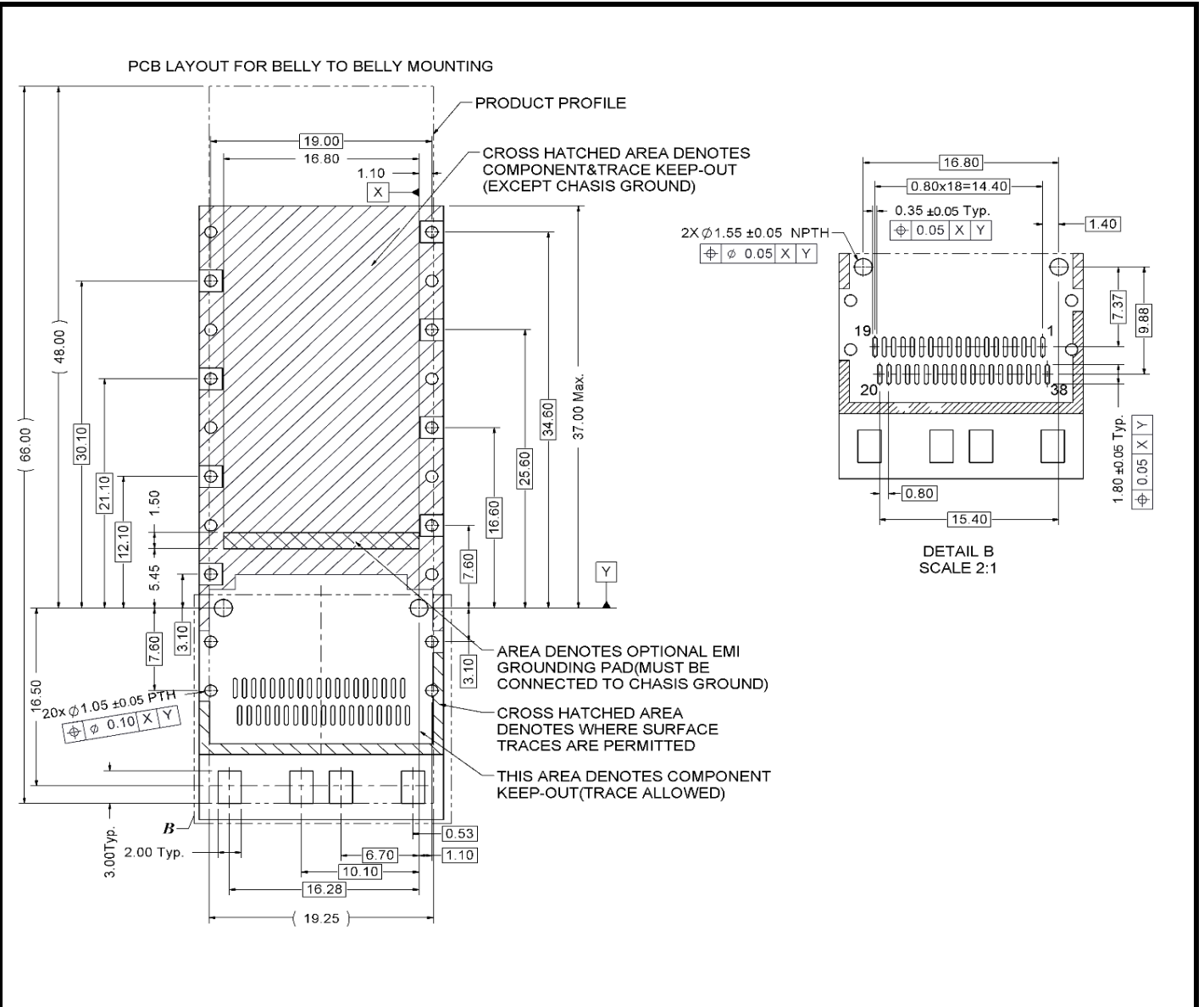
NOTES:

- 1.PADS AND VIAS CONNECT TO CHASSIS GROUND  
RECOMMEND PADS TO BE 2.00mm SQUARE
- 2.RECOMMENDED THRU HOLE PLATING INCLUDES  
HASL,OSP,OR IMMERSION(GOLD,SILVER,OR TIN)
- 3.1.57mm MINIMUM PCB THICKNESS FOR SINGLE SIDED USE.

Table1

Layout Layer	Trace	component	Grounding	Test Point	Via Hole	PTH	NPTH
Component side	X	X	O	X	X	X	O
Inner layer	O	NA	O	NA	O	X	O
Bottom side	O	O	O	O	O	X	O

X--Forbid; O--OK; NA--Not Applicable.

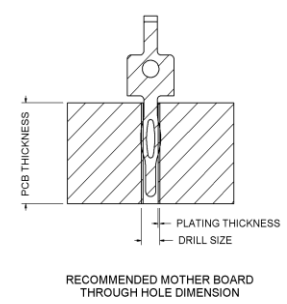


**NOTES:**

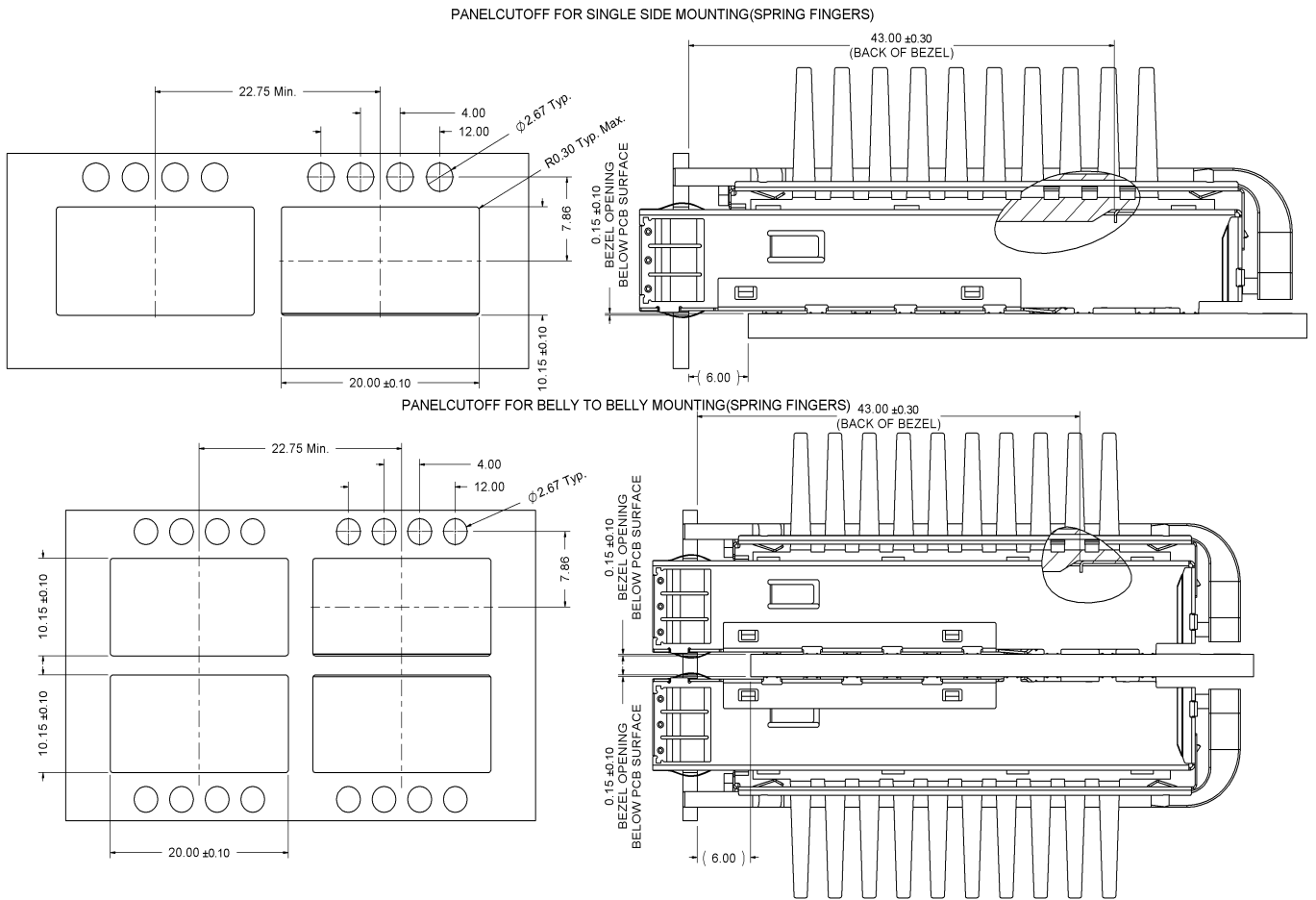
1. PADS AND VIAS CONNECT TO CHASSIS GROUND  
RECOMMEND PADS TO BE 2.00mm SQUARE
2. RECOMMENDED THRU HOLE PLATING INCLUDES HASL, OSP, OR IMMERSION (GOLD, SILVER, OR TIN)
3. 3.00mm MINIMUM PCB THICKNESS FOR BELLY TO BELLY SIDED USE.

**RECOMMENDED MOTHER BOARD THROUGH HOLE DIMENSION**

PLATED THROUGH HOLE	1.05 SHIELD PINS	0.95 SHIELD PINS
FINISHED HOLE DIAMETER	1.05 ±0.05	0.95 ±0.05
DRILLED HOLE DIAMETER	1.15	1.05
COPPER PLATING	0.025	0.025



### 3. Recommended Panel cutout



#### PRESS-FIT ASSEMBLIES

Hand place using proper seating force to engage all Leg tails into plated thru-holes.

Assemblies are to be seated per the instructions associated with the appropriate insertion tool

Note:UDE recommends only one connector assembly be installed at a time.

ASSEMBLE INSERTION FORCE		
PORT SIZE	PCB FINISH	FORCE
1X1	Copper w/OSP	300N MAX

### 4. Packing Information

16 pcs finished goods per tray

5 trays(80 pcs finished goods) per master carton

## 5. REQUIREMENTS

### Design and Construction

Product shall be of design, construction and physical dimensions specified on applicable.

### Material

#### Shield Parts

Top Shell : Copper Alloy, Thickness=0.25mm

Finish : 30 $\mu$ " min. Nickel

Bottom Shell : Copper Alloy, Thickness=0.25mm

Finish : 30 $\mu$ " min. Nickel

EMI Spring Finger : Ph.Bronze, Thickness=0.06mm

Finish : 30 $\mu$ " min. Nickel

Heatsink Clip: SUS304,Thickness=0.20mm

Heatsink: Aluminum Alloy

Finish : Anodic oxidation,Natural Colour

#### Plastic Parts

Lightpipe : PC,Transparent,UL94V-0

## 6. Operating and Storage Temperature

Operating Temperature : -40°C to +85°C

Storage Temperature : - 55°C+105°C

## 7. QSFP CAGE specifications

Insertion force: 60 N max at a max. rate of 25.4mm per minute

(QSFP module to PCB connector and QSFP cage)

Extraction force :30 N max at a max. rate of 25.4mm per minute

(QSFP module to PCB connector and QSFP cage)

Cage Retention (Latch strength) : 125N Min.

Durability : 100 cycles for standard class

## 8. Performance and Test Description

Product is designed to meet electrical, mechanical and environmental performance requirements specified in below table.

All tests are performed at ambient environmental conditions per MIL-STD-1344A and EIA-364 unless otherwise specified.

## 9. Packaging and Packing

All parts shall be packaged and packed to protect against physical damage, corrosion and deterioration during shipment and storage.