

NOTES:

1. TEST REQUIREMENTS
1.1 100% HI-POT & CONTINUITY

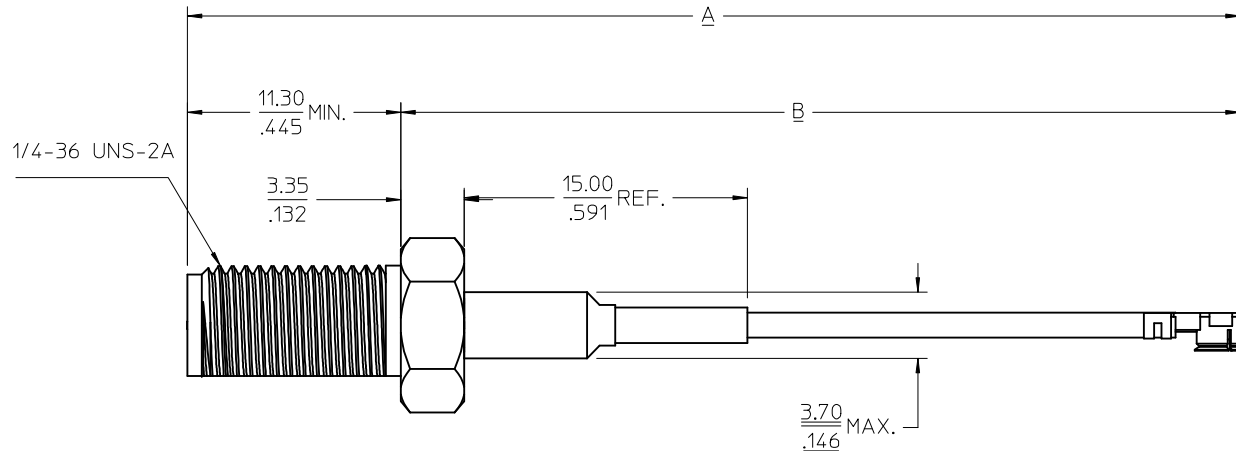
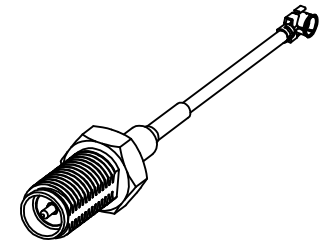
2. RoHS COMPLIANCE:
2.1 MOLEX LEAD -FREE/RoHS PRODUCT AS MANUFACTURED BY MOLEX COMPLY WITH THE PROVISIONS OF THE EUROPEAN UNION DIRECTIVES 2002/95EC RESTRICTION OF HAZARDOUS

3. MECHANICAL CHARACTERISTICS:
3.1 INNER DIELECTRIC
3.1.1 MATERIAL: FEP
3.1.2 DIMENSIONAL: OD $\varnothing 0.68 \pm 0.02$
3.2 JACKET
3.2.1 MATERIAL: FEP
3.2.2 DIMENSIONAL: OD $\varnothing 1.32 \pm 0.03$

4. ELECTRICAL CHARACTERISTICS:
4.1 IMPEDANCE: 50 OHMS ± 5 OHMS
4.2 CAPACITANCE 96 pf /m NOMINAL
4.3 ATTENUATION
4.3.1 1.90 db/1m AT 1.0GHz
4.3.2 2.55 db/1m AT 1.8GHz
4.3.3 3.15 db/1m AT 2.4GHz

MATERIALS AND FINISHS

REVERSE SMA JACK CONNECTOR	U.FL
BODY,TUBE BRASS PLATED GOLD	SHELL PHOSPHOR BRONZE PLATED GOLD
CENTER CONTACT BRASS PLATED GOLD	CENTER CONTACT PHOSPHOR BRONZE PLATED GOLD
INSULATOR TEFLON	INSULATOR PBT
SHRINK TUBE VERSAFIT V2	CABLE 1.32 CABLE



89761-2781	4.00 REF.	101.60 REF.	3.555 \pm .157	90.30 \pm 4.00
89761-2780	3.393 REF.	86.18 REF.	2.948 \pm .079	74.88 \pm 2.00
PART NO.	IN	MM	IN	MM
	A		B	

ADDED P/N:89761-2781 (PDR0812152) CHANGE DIM	74.88 \pm 2.00 WAS 74.88 \pm 4.00
	EC NO: URF2009-0471 2009/02/25 DRWNLIN CHKD: 2009/02/26 APPR:MHUANG 2009/02/27
A2	REV

QUALITY SYMBOLS	$\nabla=0$	$\nabla=0$
DESCRIPTION		

GENERAL TOLERANCES (UNLESS SPECIFIED)	mm	INCH
4 PLACES	\pm ---	\pm ---
3 PLACES	\pm ---	\pm ---
2 PLACES	\pm ---	\pm ---
1 PLACE	\pm ---	\pm ---
ANGULAR	$\pm 2^\circ$	
DRAFT WHERE APPLICABLE MUST REMAIN WITHIN DIMENSIONS		

DIMENSION STYLE	MM/IN
DRAWN BY	EVITA
DATE	2008/12/19
CHECKED BY	JUDY
DATE	2008/12/19
APPROVED BY	MISEN
DATE	2008/12/19
MATERIAL NO.	SEE TABLE
SIZE	C

SCALE	DESIGN UNITS	THIRD ANGLE PROJECTION
	METRIC	
TITLE	SMA JACK REVERSE WITH UFL 1.32 CABLE CA-SMA/UFL	
MOLEX INCORPORATED		
DOCUMENT NO.	SD-89761-278	SHEET NO. 1 OF 1
THIS DRAWING CONTAINS INFORMATION THAT IS PROPRIETARY TO MOLEX INCORPORATED AND SHOULD NOT BE USED WITHOUT WRITTEN PERMISSION		