

MATERIALS AND FINISHES

BODY BRASS  
PLATED TIN

CENTER CONTACT BRASS  
PLATED GOLD

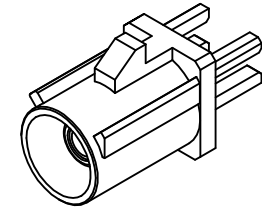
OUTER CASING HIGH TEMPERATURE PLASTIC

INSULATOR: TEFLON

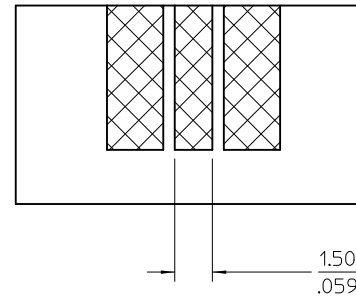
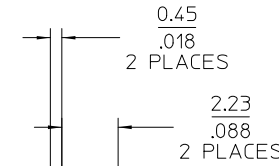
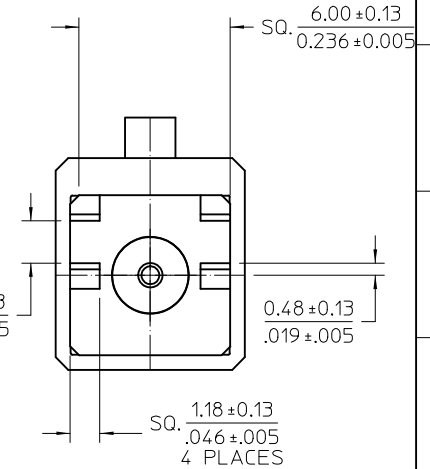
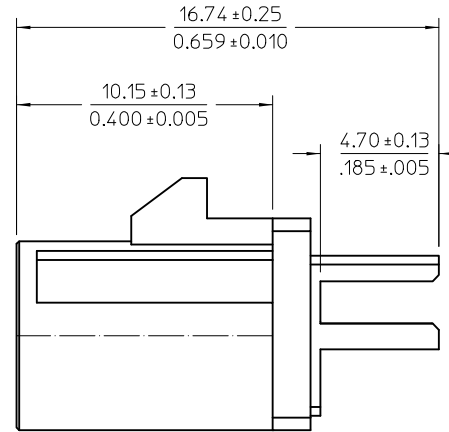
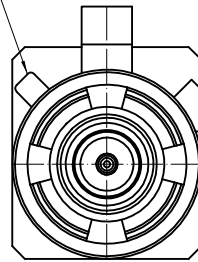
RETENTION SPECIFICATION:

THE FAKRA CONNECTOR SHROUD WILL WITHSTAND  
A LONGITUDINAL FORCE OF 110 N(24.75 LBS)

PACKAGING BY TRAY



FAKRA CONNECTOR  
CODE B SHOWN



RECOMMENDED PCB LAYOUT

PRE-RELEASE  
REFERENCE  
USE ONLY

PS-89675-3310	PRODUCT SPEC.
MIL-STD-348A, FIG. 311.1	INTERFACE
SPECIFICATION	DESCRIPTION

ADDED RECOMMENDED PCB LAYOUT

EC NO: 2011/10/20  
DRAWN BY: DRW:INELIN  
CHKD: APPR:  
REV: A1

QUALITY SYMBOLS  
=0  
=0

GENERAL TOLERANCES (UNLESS SPECIFIED)	
4 PLACES	± .004
3 PLACES	± .005
2 PLACES	± .006
1 PLACE	± .007
ANGULAR ± 2 °	
DRAFT WHERE APPLICABLE MUST REMAIN WITHIN DIMENSIONS	

DIMENSION STYLE	
MM/IN	
DRAWN BY	DATE
JOYCE	2008/5/30
CHECKED BY	DATE
JOANNE	2008/5/30
APPROVED BY	DATE
MHUANG	2011/09/16
MATERIAL NO.	
SIZE	SEE SHEET 2

SCALE	DESIGN UNITS	THIRD ANGLE PROJECTION
	METRIC	
TITLE		
SMB JACK,FAKRA, EDGE MOUNT PCB, 50 OHM SMB-J/PCB		
MOLEX MOLEX INCORPORATED		
DOCUMENT NO.	SHEET NO.	
SD-73403-590	1 OF 2	

13

12

11

10

9

8

7

6

5

4

3

2

1

J

J

I

I

H

H

G

G

F

F

E

E

D

D

C

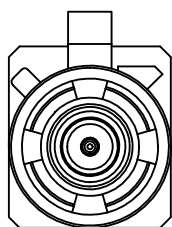
C

B

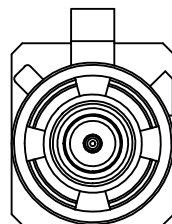
B

A

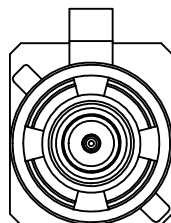
A



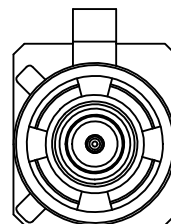
CODE A



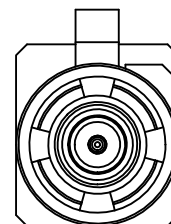
CODE B



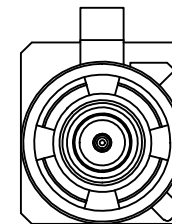
CODE C



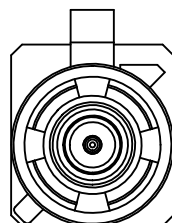
CODE D



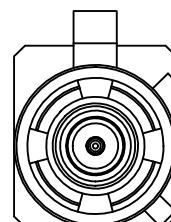
CODE E



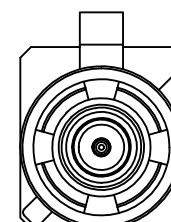
CODE F



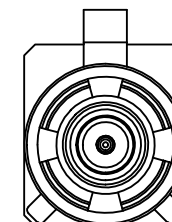
CODE G



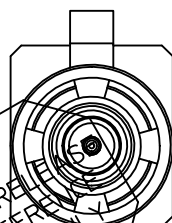
CODE H



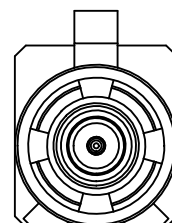
CODE I



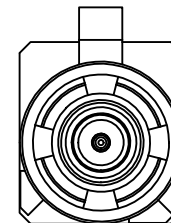
CODE K



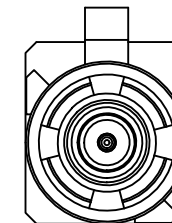
CODE Z



CODE L



CODE M



CODE N

PRE-RELEASE  
REFER TO  
USE ONLY

N	PASTEL GREEN	73403-5913
M	PASTEL ORANGE	73403-5912
L	CARMINE RED	73403-5911
Z	WATER BLUE	73403-5910
K	CURRY YELLOW	73403-5909
I	BEIGE	73403-5908
H	VIOLET	73403-5907
G	GRAY	73403-5906
F	BROWN	73403-5905
E	GREEN	73403-5904
D	BORDEAUXVIOLET	73403-5903
C	BLUE	73403-5902
B	SIGNAL WHITE	73403-5901
A	BLACK	73403-5900
KEYING CODE	COLOR	PART NO.

SEE SHEET 1	2011/10/20
EC NO:	DRW:INLIN
CHKD:	APPR:
A1	

QUALITY SYMBOLS	▽=0
	▽=0
DESCRIPTION	

GENERAL TOLERANCES (UNLESS SPECIFIED)	
mm	INCH
4 PLACES ± ---	± ---
3 PLACES ± ---	± ---
2 PLACES ± ---	± ---
1 PLACE ± ---	± ---
ANGULAR ± 2 °	
DRAFT WHERE APPLICABLE MUST REMAIN WITHIN DIMENSIONS	

DIMENSION STYLE	MM/IN
DRAWN BY	DATE
JOYCE	2008/5/30
CHECKED BY	DATE
JOANNE	2008/5/30
APPROVED BY	DATE
MHUANG	2011/09/16
MATERIAL NO.	
SIZE	C

SCALE	6:1
DESIGN UNITS	METRIC
THIRD ANGLE PROJECTION	
TITLE	SMB JACK,FAKRA, EDGE MOUNT PCB, 50 OHM SMB-J/PCB
MOLEX	MOLEX INCORPORATED
DOCUMENT NO.	SD-73403-590

SHEET NO.	2 OF 2
THIS DRAWING CONTAINS INFORMATION THAT IS PROPRIETARY TO MOLEX INCORPORATED AND SHOULD NOT BE USED WITHOUT WRITTEN PERMISSION	

12

11

10

9

8

7

6

5

4

3

2

1