

MATERIALS AND FINISHES:

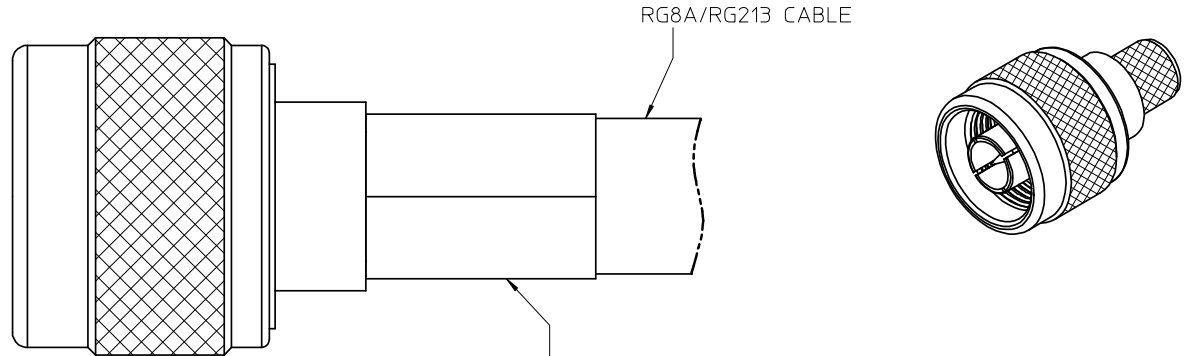
BODY: BRASS
PLATED NICKEL

CONTACT: BRASS
PLATED GOLD

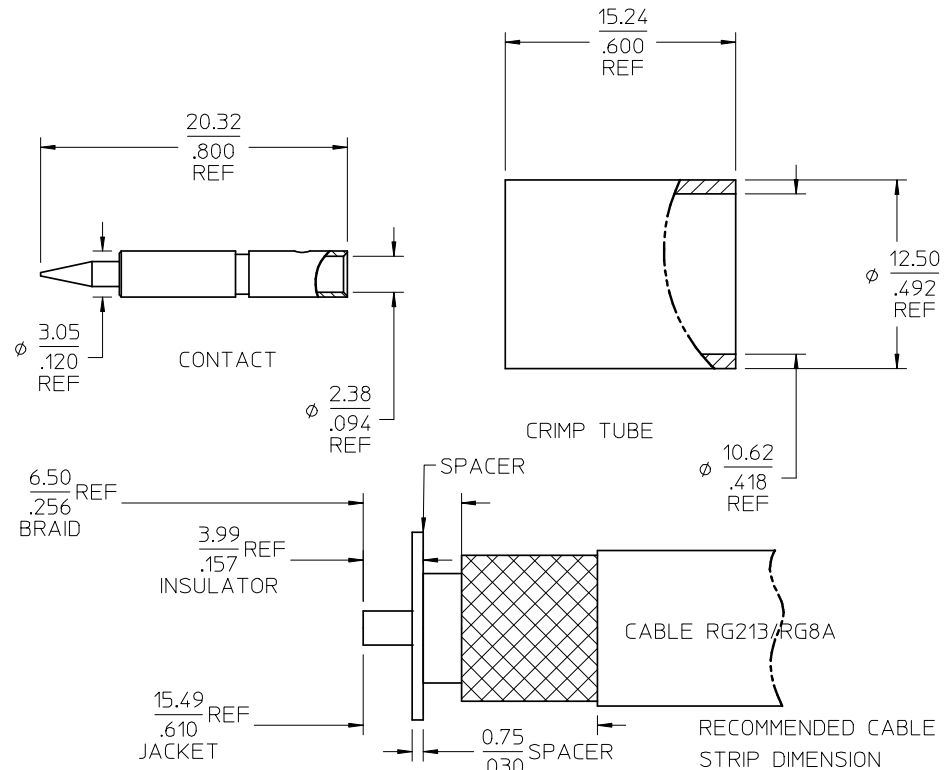
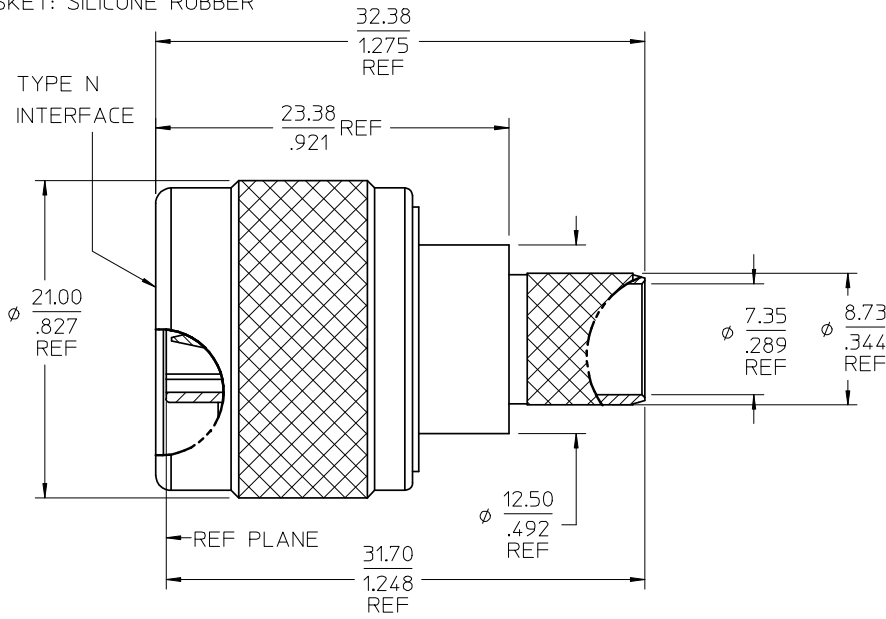
INSULATOR: TEFLON

COUPLING NUT: BRASS
PLATED NICKEL

GASKET: SILICONE RUBBER



CRIMP SIZE (HEX: 10.89 (.429))



PART #: 73276-0030

ES-89675-3020	N INTERFACE
PS-89675-0920	ELEC/MECH PERFORMANCE
SPECIFICATION	DESCRIPTION

CHG: UPDATE CABLE VIEW

EC NO: URF2008-0314
 DRWN: JWIENER 2007/12/10
 CHKD: SSSHAH 2007/12/10
 APPR: JWIENER 2007/12/10

QUALITY SYMBOLS
 ▽=0
 ▽=0

GENERAL TOLERANCES (UNLESS SPECIFIED)

	mm	INCH
4 PLACES	± .005	± .0005
3 PLACES	± .003	± .0003
2 PLACES	± .002	± .0002
1 PLACE	± .001	± .0001

ANGULAR ± 2°

DRAFT WHERE APPLICABLE MUST REMAIN WITHIN DIMENSIONS

DIMENSION STYLE: MM/IN

SCALE: DESIGN UNITS METRIC

THIRD ANGLE PROJECTION

DRAWN BY: JYL DATE: 2007/12/05

CHECKED BY: SSS DATE: 2007/12/05

APPROVED BY: JDW DATE: 2007/12/05

MATERIAL NO: 732760030

DOCUMENT NO: SD-73276-003

SHEET NO: 1 OF 1

TITLE: N PLUG CRIMP STYLE RG8A, RG213

MOLEX INCORPORATED

THIS DRAWING CONTAINS INFORMATION THAT IS PROPRIETARY TO MOLEX INCORPORATED AND SHOULD NOT BE USED WITHOUT WRITTEN PERMISSION