

1

2

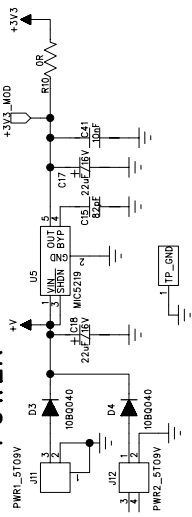
3

4

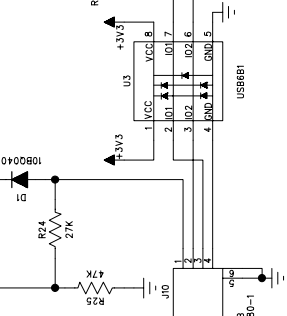
5

6

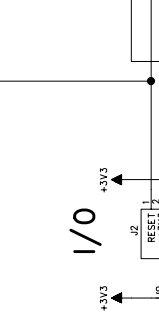
POWER



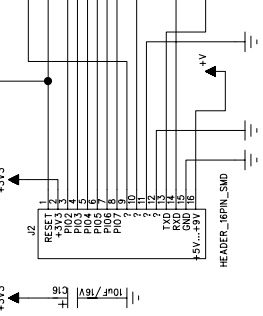
USB



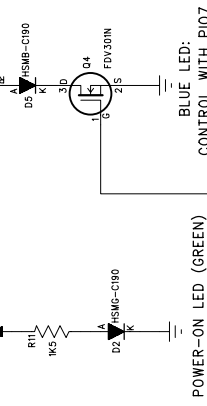
RESET BUTTON



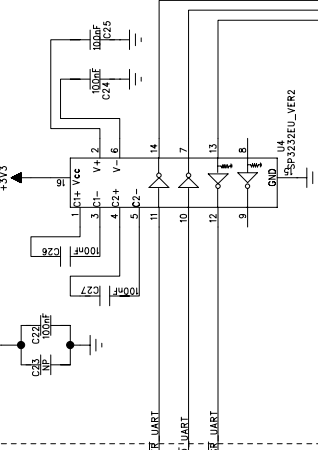
I/O



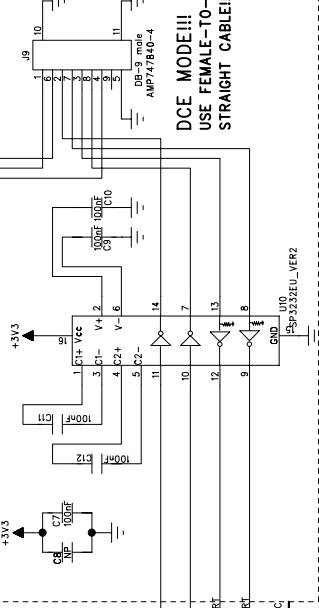
LEDS



UART

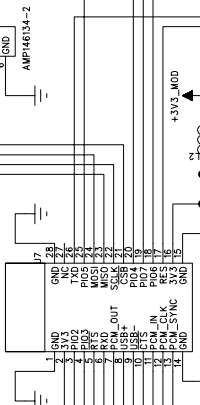


RS-232



DCE MODE!!!
USE FEMALE-TO-FEMALE
STRAIGHT CABLE!!!

WT11



SPI



COMPANY: BLUEGIGA TECHNOLOGIES INC

TITLE: WT11 Evaluation Kit V.1.0

DRAWN: Pasi Rahikkala	DATED: 01.09.2006
CHECKED:	DATED:
QUALITY CONTROL:	DATED:
RELEASED:	DATED:

REV:

DRAWING NO:

CODE:

SIZE:

SCALE:

SHEET: 1 OF 3



