

DAM-P2-D-N0-000-08-57

1. Explanation of Part Number

DAM - P2 - D - N0 - 000 - 08 - 57
 (1) (2) (3) (4) (5) (6) (7)

(1) Product type : DAM-Dipole Antenna Module

(2) Appearance Series : P2

(3) Frequency : D=920MHz,1800MHz~1900MHz

(4) Coaxial Cable Specification : NO Cable

(5) Coaxial Cable Length : 000=no Length

(6) Connector Types :08= SMA connector

(7) Suffix for special requirements : 57=SMA 鍍鎳

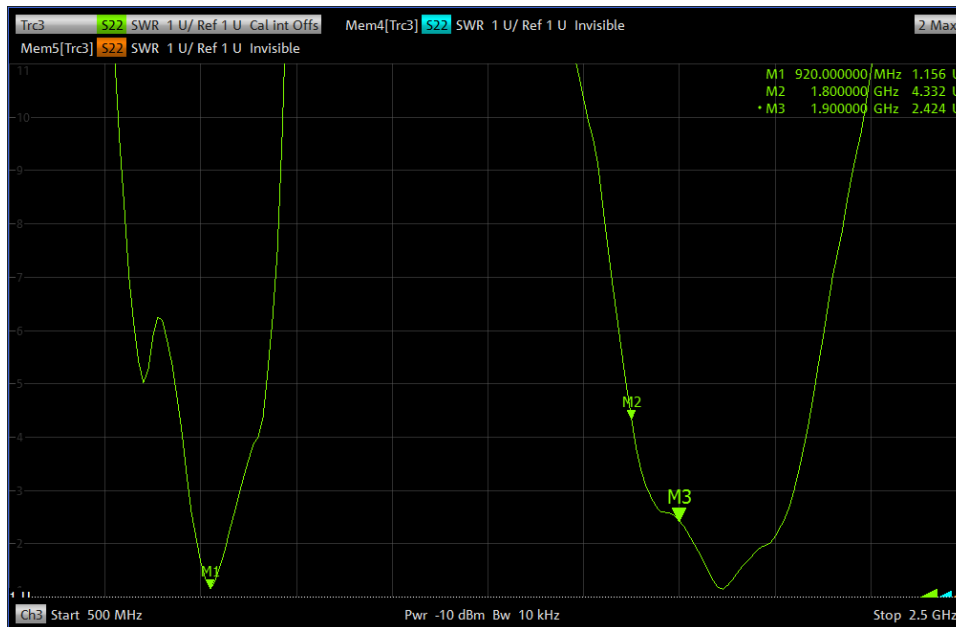
※ RoHS Compliant

2. Electrical properties:

| Item | Property |
|-----------------|------------------------|
| Frequency Range | 920MHz,1800MHz~1900MHz |
| Impedance | 50 Ω (Typ.) |
| VSWR | 5 max. |
| Peak Gain | 3.5 dBi (Max) |

2-1 VSWR

| Frequency | 920 | 1800 | 1900 |
|-----------|------|------|------|
| VSWR | ≤2.0 | ≤5.0 | ≤3.5 |



UNLESS OTHER SPECIFIED TOLERANCES ON :
 X=N/R X.X=N/R X.XX =N/R
 ANGLES=N/R HOLEDIA=N/R



INPAQ TECHNOLOGY CO., LTD.

SCALE : N/R

UNIT : mm

DRAWN BY:王婷

CHECKED BY: 张涛

DESIGNED BY: 马维华

APPROVED BY : 徐克文

TITLE : DAM-P2-D-N0-000-08-57 工規

DOCUMENT
NO.

ENS000131730

SPEC REV.
P0

2-2 Efficiency and Radiation Patten

Instruments: Anechoic Chamber, Network Analyzer, Quarter Ridge Horn Antenna.

Chamber description:

- (1) The anechoic chamber satisfied a far-field measurement system condition with size of 8m *4m*4m.
- (2) The Probing antenna is a Quarter Ridge Horn Antenna which is placed in the one side of chamber And the AUT is placed in the other side of the chamber.
- (3) The antenna under test is fixed on a step rotator. We can control the rotating angle for accurate or rough measurement.

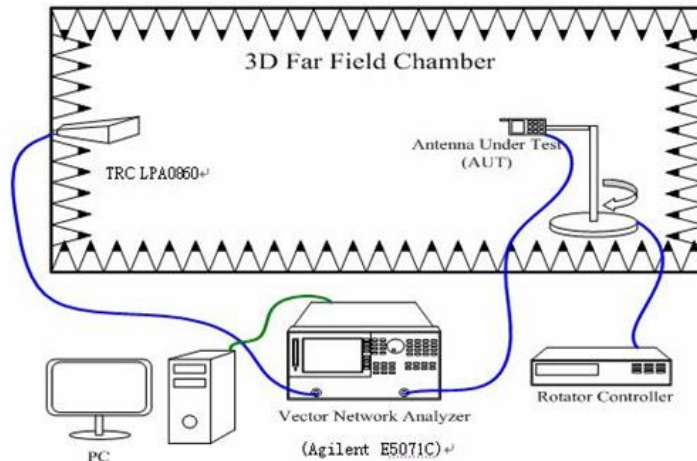


Fig. 1 shows the interior components of Anechoic chamber

2-2-1 Efficiency & Gain (dBi)

| Frequency (MHz) | Peak Gain (dBi) | Gain(dB) | Efficiency (%) |
|-----------------|-----------------|----------|----------------|
| 920 | -0.39 | -5.69 | 26.97 |
| 1800 | 2.13 | -5.68 | 27.06 |
| 1810 | 1.51 | -4.64 | 34.33 |
| 1820 | 0.68 | -4.58 | 34.82 |
| 1830 | 0.87 | -4.70 | 33.89 |
| 1840 | 1.12 | -5.17 | 30.39 |
| 1850 | 1.11 | -5.28 | 29.64 |
| 1860 | 2.20 | -4.01 | 39.75 |
| 1870 | 3.14 | -2.85 | 51.87 |
| 1880 | 2.82 | -3.28 | 46.97 |
| 1890 | 1.75 | -4.51 | 35.44 |
| 1900 | 1.45 | -4.67 | 34.10 |

UNLESS OTHER SPECIFIED TOLERANCES ON :
X=N/R X.X=N/R X.XX =N/R
ANGLES=N/R HOLEDIA=N/R



INPAQ TECHNOLOGY CO., LTD.

SCALE : N/R

UNIT : mm

DRAWN BY: 王婷

CHECKED BY: 张涛

DESIGNED BY: 马维华

APPROVED BY: 徐克文

TITLE : DAM-P2-D-N0-000-08-57 工規

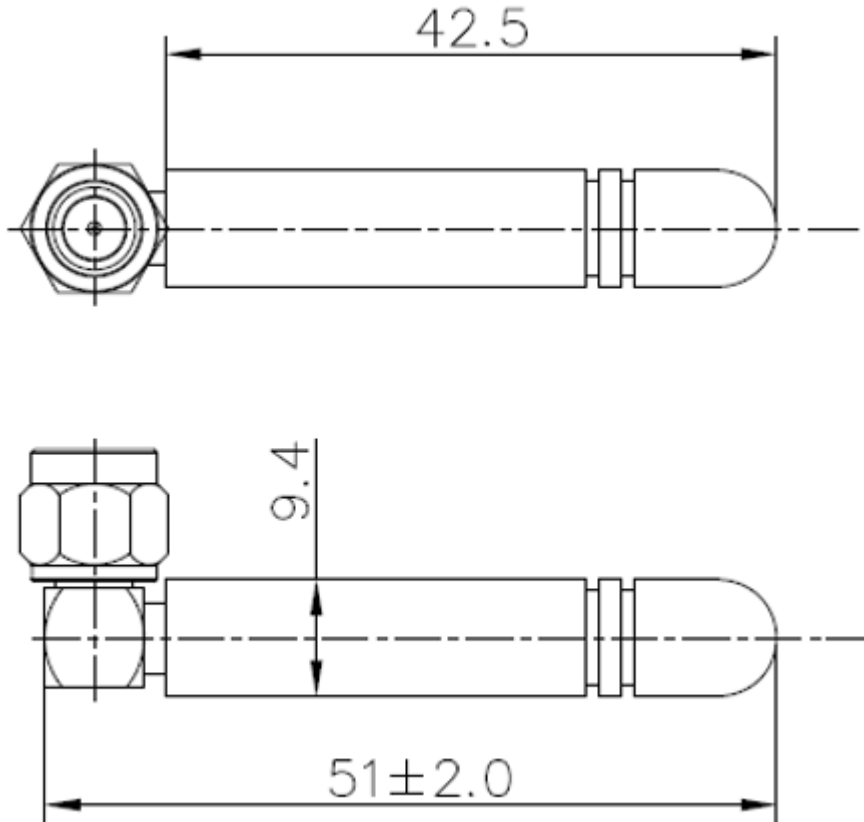
DOCUMENT NO.

ENS000131730

SPEC REV.

P0

3.Mechanical properties:



| | | | |
|-----|-------------|----------|--------|
| 2 | 本體 | TPE | 黑色 |
| 1 | SMA90° 公頭公針 | 銅 | 鍍鎳 |
| NO. | Description | Material | finish |

4.Packing spec

4.1 使用排袋方式，每袋 60PCS，6 袋裝入 1PCS 包裝內箱，共計 360PCS.

4.2 將 4PCS 包裝內箱裝入 1PCS 外箱，共計 1440PCS.

PS:标签要求參考 LPRS.



UNLESS OTHER SPECIFIED TOLERANCES ON :
X=N/R X.X=N/R X.XX =N/R
ANGLES=N/R HOLEDIA=N/R



INPAQ TECHNOLOGY CO., LTD.

SCALE : N/R

UNIT : mm

DRAWN BY:王婷

CHECKED BY: 张涛

DESIGNED BY: 马維华

APPROVED BY : 徐克文

THIS DRAWINGS AND SPECIFICATIONS ARE THE PROPERTY OF INPAQ TECHNOLOGY CO.,LTD.AND SHALL NOT BE REPRODUCED OR USED AS THE BASIS FOR THE MANUFACTURE OR SALE OF APPARATUS OR DEVICES WITHOUT PERMISSION

TITLE : DAM-P2-D-N0-000-08-57 工規

DOCUMENT NO.

ENS000131730

SPEC REV.
P0