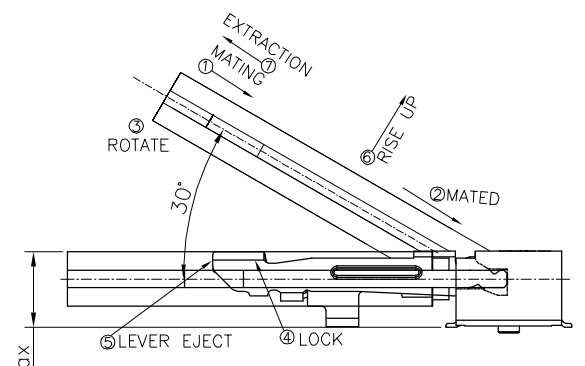
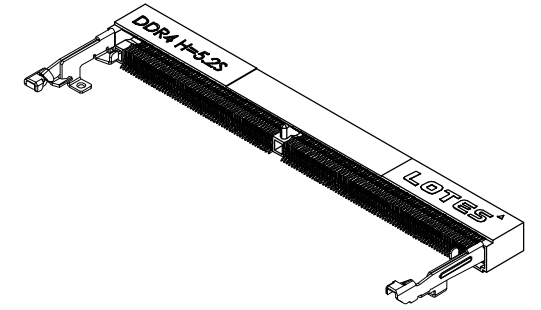
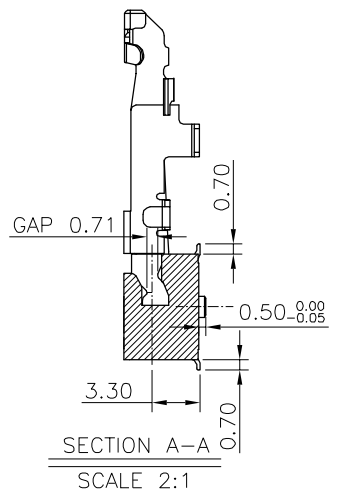
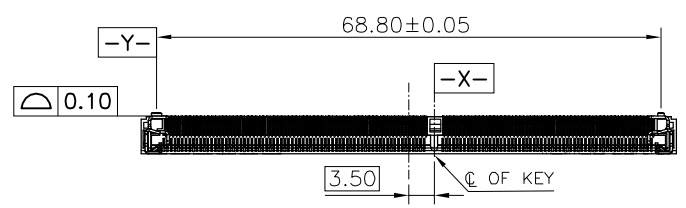
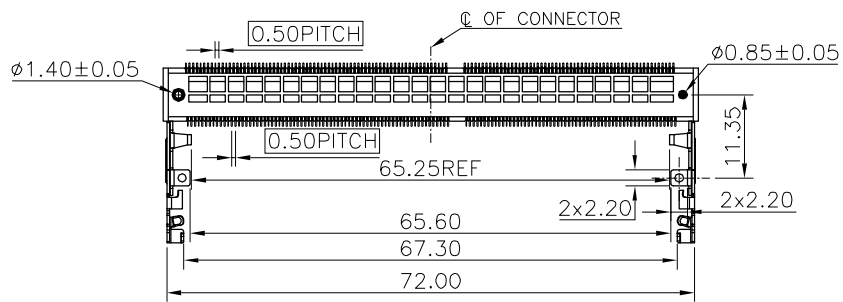
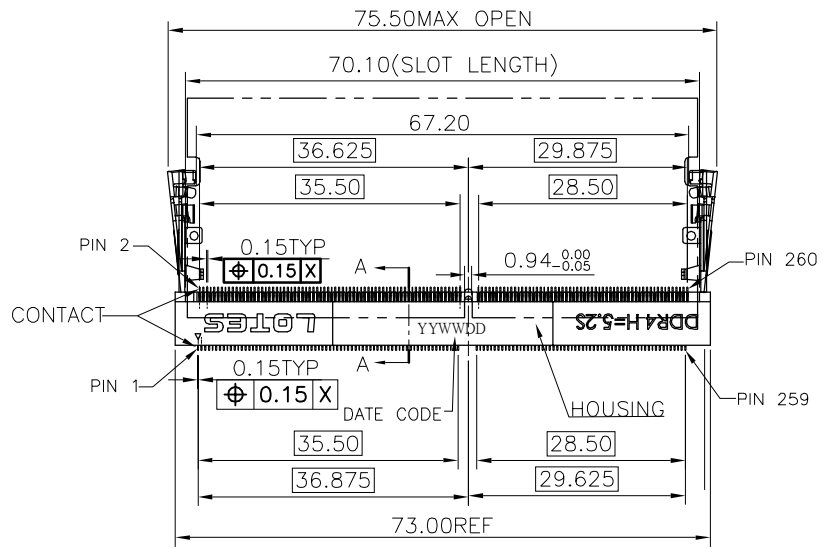
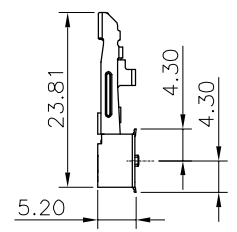


REV.	ECR/N NO./DESCRIPTION	DATE	DRAWN	CHECKED	APPROVE
1	SN16003	03/05'16	HBQ	Vito	Gear
2	SN19079	07/03'19	HBQ	Vito	Frank
2A	SR190**	10/19'19	XU	Vito	Frank



HOW TO MATE AND UNMATE
 MATE: ① → ④
 UNMATE: ⑤ → ⑦
 SCALE 2:1



GENERAL TOLERANCES UNLESS SPECIFIED		PART NO. SEE TABLE	LOTES		
X ± 0.35	X° $\pm 3^\circ$				
.XX ± 0.25	.X° $\pm 2^\circ$	APPROVED BY Barney	TITLE SODDR4 5.2H 260 PIN STD TYPE		
.XXX ± 0.15	.XX° $\pm 1^\circ$	CHECKED BY Vito	DWG NO. AP-ADDR0207		
CUSTOMER DRAWING		DRAWN BY XU	SHEET 1 / 5	SCALE 1 : 1	REV 2A
SIZE A4	UNITS MM [INCH]				

1 2 3 4 5 6 7 8

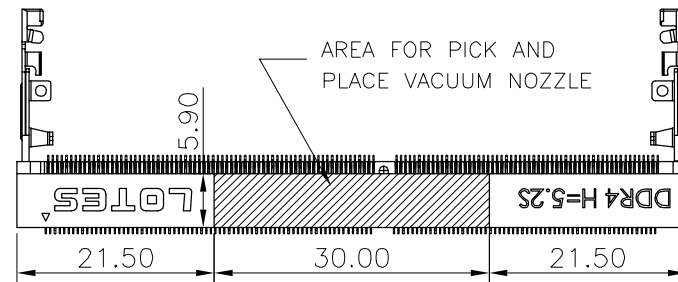
F
E
D
C
B
A

NOTES:

- 1.MATERIALS:
HOUSING: LCP,UL 94V-0.
CONTACT: BRASS C2680.
LATCH: STAINLESS STEEL SUS301.
- 2.FINISH:
1)CONTACT:UNDERPLATED NICKEL (DETAL SEE TABLE)
GOLD PLATED ON SOLDER AREA.
GOLD PLATED ON CONTACT AREA.(DETAL SEE TABLE)
2)LATCH:UNDERPLATED NICKEL 50u"MIN,MATTE TIN 80u"MIN.
- 3.ELECTRICAL PERFORMANCE
LLCR INITIAL 50mΩ MAX PER CONTACT.
FINAL ΔLLCR=20mΩ MAX
- 4.MECHANICAL PERFORMANCE,
MATING & UNMATING FORCE: 6.1 Kgf MAX.
- 5.IR REFLOW:
THE PEAK TEMPRATURE ON THE BOARD SHALL BE
MAINTAINED FOR 10 SECONDS AT 260±5°C.
6. DC: XXXXXX
DATE
WEEK
YEAR
- 7.PRODUCT NUMBER NOTE:ADDR****-****
PACKING DIRECTION
TYPE SERIAL NUMBER
HALOGEN FREE
PRODUCT SERIAL NUMBER
PRODUCT TYPE
CONNECTOR
- 8.RoHS COMPLIANT.
HF COMPLIANT.

TABLE:

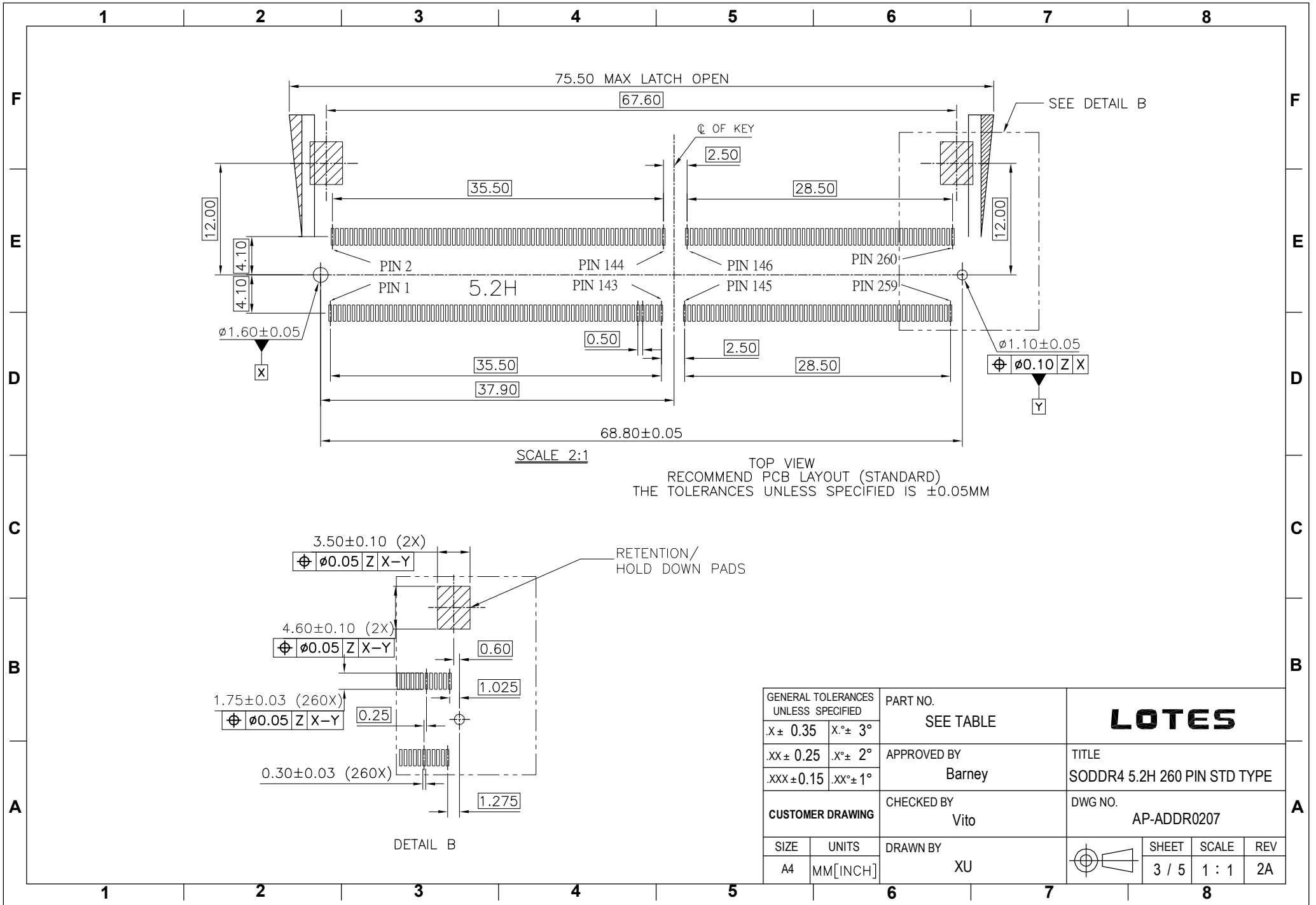
NO.	PART NO.	COLOR	AU DESCRIPTION	NICKEL DESCRIPTION
1	ADDR0207-P001A	BLACK	GOLD G/F ON CONTACT AREA	50u" MIN
			GOLD G/F ON SOLDER AREA	NICKEL UNDER PLATED
2	ADDR0207-P002A	BLACK	GOLD 10u" ON CONTACT AREA	50u" MIN
			GOLD G/F ON SOLDER AREA	NICKEL UNDER PLATED
3	ADDR0207-P003A	BLACK	GOLD 15u" ON CONTACT AREA	90u" MIN
			GOLD G/F ON SOLDER AREA	NICKEL UNDER PLATED
4	ADDR0207-P004A	BLACK	GOLD 30u" ON CONTACT AREA	50u" MIN
			GOLD G/F ON SOLDER AREA	NICKEL UNDER PLATED

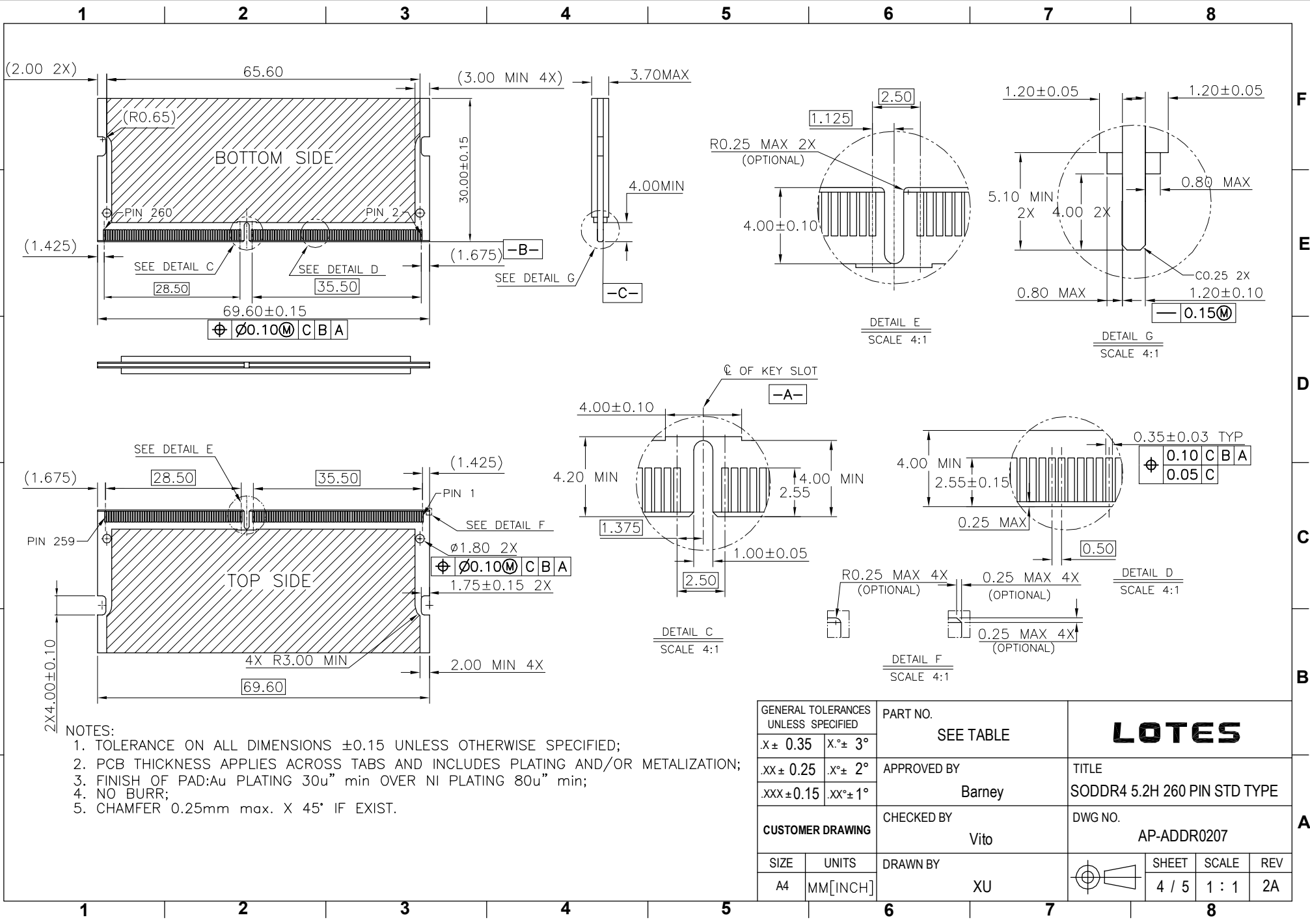


GENERAL TOLERANCES UNLESS SPECIFIED		PART NO. SEE TABLE	LOTES			
X ± 0.35	X.° ± 3°					
.XX ± 0.25	.X.° ± 2°	APPROVED BY Barney	TITLE SODDR4 5.2H 260 PIN STD TYPE			
.XXX ± 0.15	.XX.° ± 1°	CHECKED BY Vito	DWG NO. AP-ADDR0207			
CUSTOMER DRAWING		DRAWN BY XU		SHEET 2 / 5	SCALE 5 : 4	REV 2A
SIZE A4	UNITS MM [INCH]					

F
E
D
C
B
A

1 2 3 4 5 6 7 8

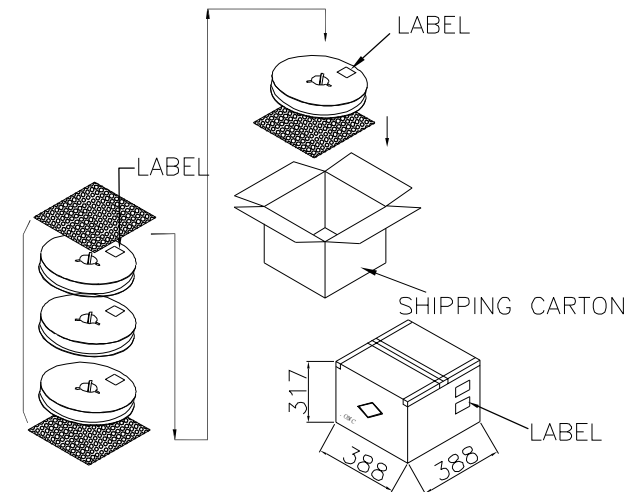
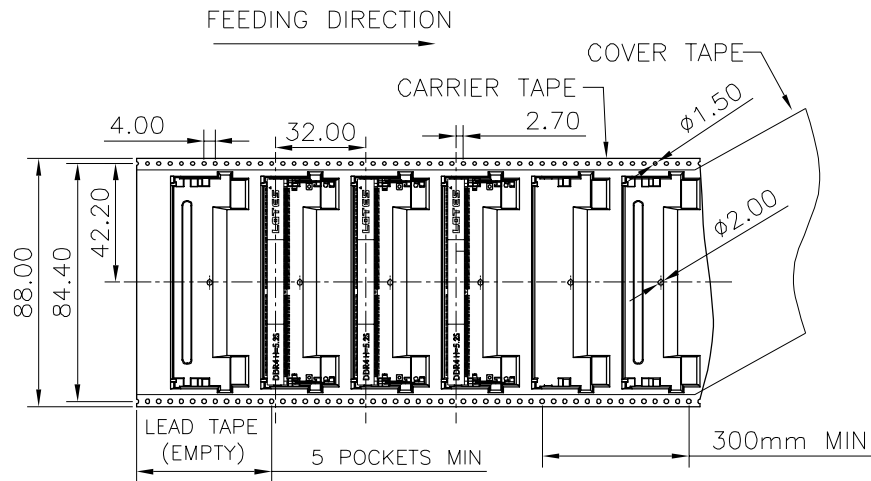




NOTES:

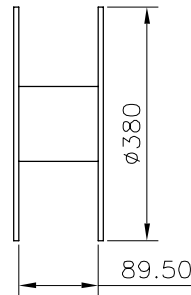
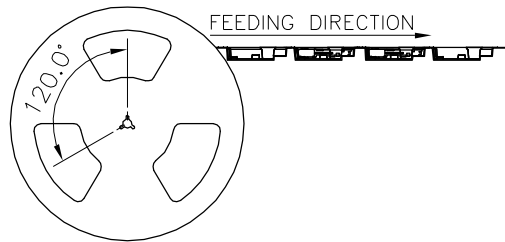
1. TOLERANCE ON ALL DIMENSIONS ± 0.15 UNLESS OTHERWISE SPECIFIED;
2. PCB THICKNESS APPLIES ACROSS TABS AND INCLUDES PLATING AND/OR METALIZATION;
3. FINISH OF PAD: Au PLATING 30u" min OVER NI PLATING 80u" min;
4. NO BURR;
5. CHAMFER 0.25mm max. X 45° IF EXIST.

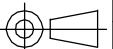
GENERAL TOLERANCES UNLESS SPECIFIED		PART NO. SEE TABLE	LOTES		
$X \pm 0.35$	$X.^{\circ} \pm 3^{\circ}$				
$.XX \pm 0.25$	$.X.^{\circ} \pm 2^{\circ}$	APPROVED BY Barney	TITLE SODDR4 5.2H 260 PIN STD TYPE		
$.XXX \pm 0.15$	$.XX.^{\circ} \pm 1^{\circ}$	CHECKED BY Vito	DWG NO. AP-ADDR0207		
CUSTOMER DRAWING		DRAWN BY XU	SHEET 4 / 5	SCALE 1 : 1	REV 2A
SIZE A4	UNITS MM [INCH]				



NOTES:

1. MATERIAL :
 - 1.1 CARRY TAPE: PS
 - 1.2 COVER TAPE: PET
 - 1.3 SHIPPING CARTON: CORRUGATED FIBER
2. DIMENSION :
 - 2.1 REEL: W=88.0, ϕ A=380
 - 2.2 SHIPPING CARTON: L=388, W=388, H=317 (INNER)
3. QUANTITY :
 - 3.1 PRIMARY PACKING: 300 PCS/REEL
 - 3.2 SECONDARY PACKING: 3 REELS/CARTON(900PCS)
4. PEELING RESISTANCE: 20gf~120gf.
5. PEELING SPEED: 300mm/minutes.



GENERAL TOLERANCES UNLESS SPECIFIED		PART NO. SEE TABLE	LOTES			
X \pm 0.35	X. $^{\circ}$ \pm 3 $^{\circ}$					
.XX \pm 0.25	.X. $^{\circ}$ \pm 2 $^{\circ}$	APPROVED BY Barney	TITLE SODDR4 5.2H 260 PIN STD TYPE			
.XXX \pm 0.15	.XX. $^{\circ}$ \pm 1 $^{\circ}$	CHECKED BY Vito	DWG NO. AP-ADDR0207			
CUSTOMER DRAWING		DRAWN BY XU		SHEET	SCALE	REV
SIZE A4	UNITS MM[INCH]			5 / 5	N/A	2A