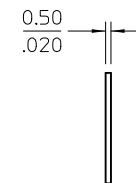
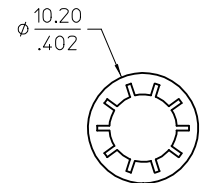
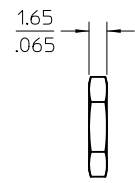
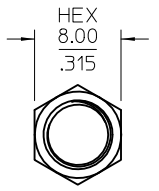
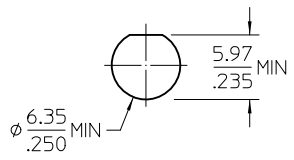
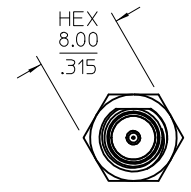
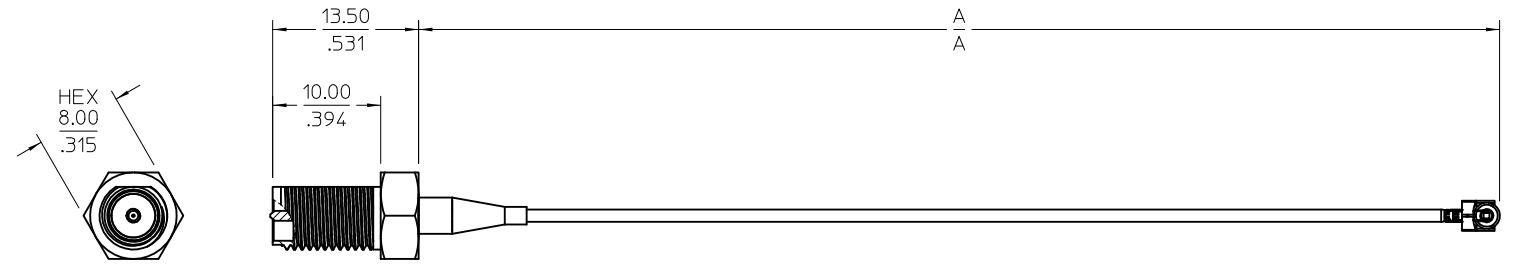
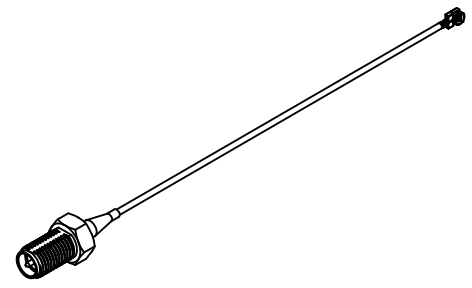


MATERIALS AND FINISHES:

- SMA JACK STR RP
- BODY, JAM NUT BRASS  
PLATED GOLD
- CONTACT BRASS  
PLATED GOLD
- INSULATOR TEFLON
- LOCK WASHER SPCC  
PLATED GOLD
- CMP CONNECTOR
- BODY PHOSPHOR BRONZE  
PLATED GOLD
- PIN PHOSPHOR BRONZE  
PLATED GOLD
- INSULATOR PBT
- CABLE DIA. 1.13  
OR EQUIVALENT
- SHRINK TUBE VERSAFIT  
OR EQUIVALENT



JAN NUT

LOCK WASHER

RECOMMENDED PANEL CUTOUT  
MAX PANEL THICKNESS 2.01/.079

PRE-RELEASE  
REFERENCE  
USE ONLY

89762-5581	3.937±.197	100.00±5.00
89762-5580	5.905±.197	150.00±5.00
PART NO.	IN	MM
DIM	A	

CHG:ADDED -5581 PER PDR1404/583 EC NO: 2014/04/10 DRAWN BY: RYEH CHKD: KERR IE APPR:	DESCRIPTION 2	QUALITY SYMBOLS	GENERAL TOLERANCES (UNLESS SPECIFIED)	DIMENSION STYLE	SCALE	DESIGN UNITS	THIRD ANGLE PROJECTION
		4 PLACES ±--- ±--- 3 PLACES ±--- ±--- 2 PLACES ±--- ±--- 1 PLACE ±--- ±--- 0 PLACE ±--- ±---	mm INCH ±--- ±--- ±--- ±--- ±--- ±--- ±--- ±---	MM/IN DRAWN BY: RYEH DATE: 2014/02/12 CHECKED BY: KERR IE DATE: 2014/02/12 APPROVED BY:	3:1 METRIC	CA SMA JACK STR RP TO CMP W/DIA 1.13 CABLE CA-SMAJ/CMP	
		ANGULAR ± 2 ° DRAFT WHERE APPLICABLE MUST REMAIN WITHIN DIMENSIONS	MATERIAL NO. SEE TABLE	DOCUMENT NO. SD-89762-558	SHEET NO. 1 OF 1		
		THIS DRAWING CONTAINS INFORMATION THAT IS PROPRIETARY TO MOLEX INCORPORATED AND SHOULD NOT BE USED WITHOUT WRITTEN PERMISSION					