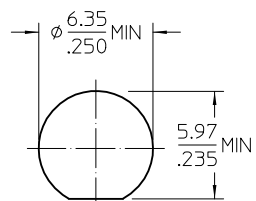
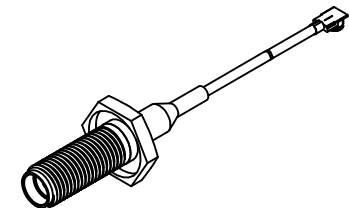
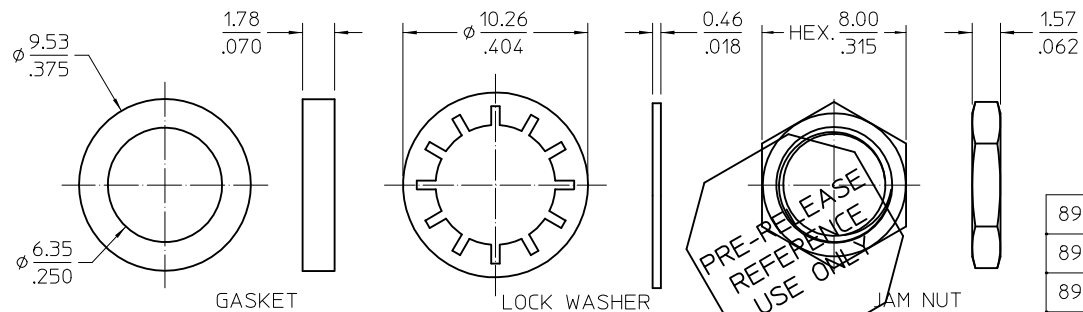
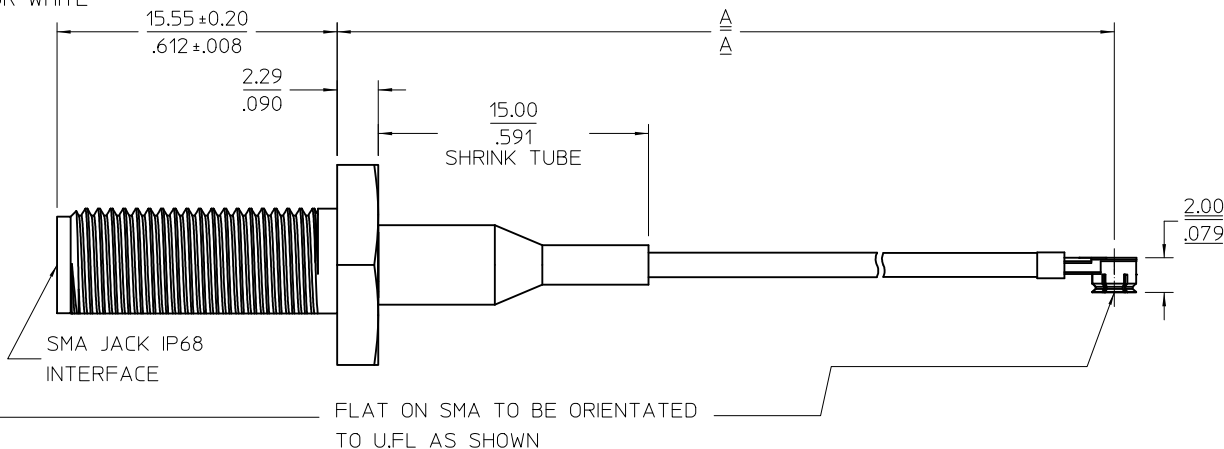
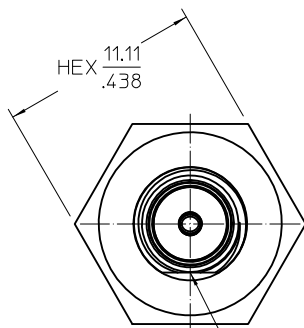


MATERIALS AND FINISHES:

SMA JACK STR IP68 BODY: CRIMP TUBE BRASS PLATED GOLD	GASKET SILICONE RUBBER	SHRINK TUBE: VERSAFIT OR EQUIVALENT
CENTER CONTACT: BERYLLIUM COPPER PLATED GOLD SEE TABLE	CMP CONNECTOR	CABLE: DIA 1.37 OR EQUIVALENT
INSULATOR: TEFLON	BODY: PHOSPHOR BRONZE PLATED GOLD	
JAM NUT BRASS PLATED GOLD	CENTER CONTACT: PHOSPHOR BRONZE PLATED GOLD	
LOCK WASHER: SEE TABLE PLATED GOLD	HOUSING: PBT, COLOR WHITE	



RECOMMENDED
PANEL LAYOUT



PRE-RELEASE
REFERENCE
USE ONLY

89762-5372	1 TO 3 MICROINCHES	SPCC
89762-5371	10 MICROINCHES MIN	PHOSPHOR BRONZE
89762-5370	10 MICROINCHES MIN	PHOSPHOR BRONZE
PART NO.	CENTER CONTACT	LOCK WASHER

89762-5372	3.543±.079	90.00±2.00	POLYBAG
89762-5371	7.874±.197	200.00±5.00	POLYBAG
89762-5370	3.543±.079	90.00±2.00	POLYBAG
PART NO.	IN	MM	PACKAGING
DIM	A		

CHG:ADDED -5372
PER PDR14121809
EC NO: 2014/12/11
DRAWN BY: JDRW/RYEH
CHKD: CHKD:
APPR: APPR:

QUALITY SYMBOLS
GENERAL TOLERANCES (UNLESS SPECIFIED)
4 PLACES ± .005 ± .005
3 PLACES ± .005 ± .005
2 PLACES ± .005 ± .005
1 PLACE ± .005 ± .005
0 PLACE ± .005 ± .005
ANGULAR ± 2°
DRAFT WHERE APPLICABLE MUST REMAIN WITHIN DIMENSIONS

DIMENSION STYLE
MM/IN
DRAWN BY: CWE102
DATE: 2010/08/27
CHECKED BY: KERRIE
DATE: 2010/08/27
APPROVED BY: MHUANG
DATE: 2010/09/18
MATERIAL NO.
SIZE C

SCALE
DESIGN UNITS
METRIC
THIRD ANGLE PROJECTION
TITLE
CA, SMA JACK BLKHD IP68
TO CMP WITH 1.37MM CABLE
CA-SMA_J/CMP_P
molex
DOCUMENT NO.
SD-89761-537
SHEET NO.
1 OF 1