

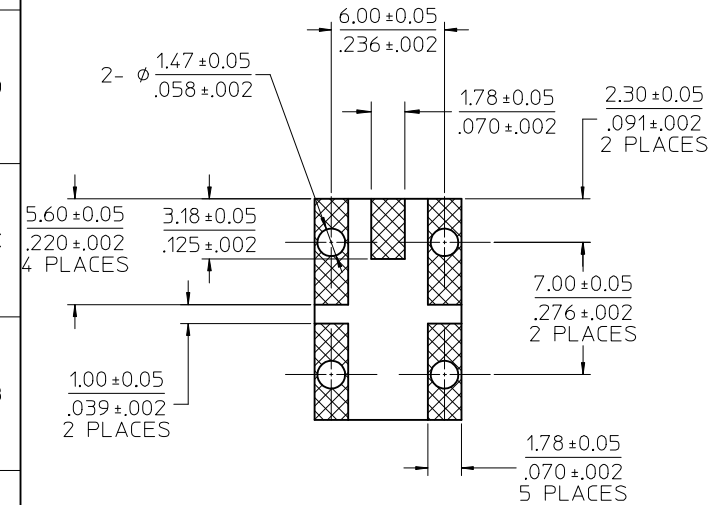
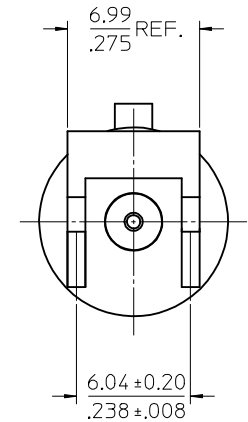
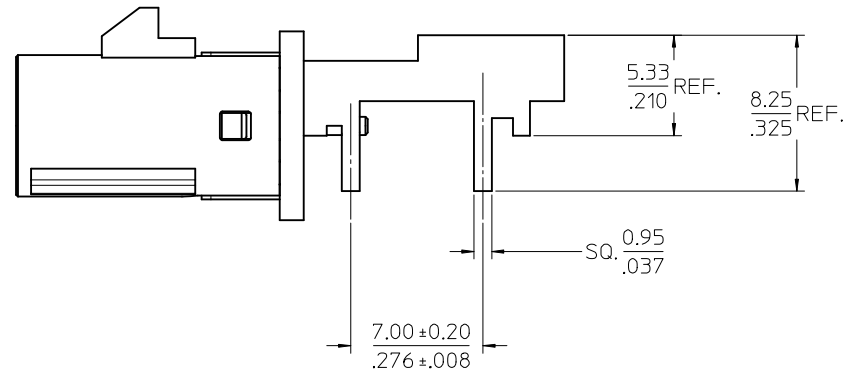
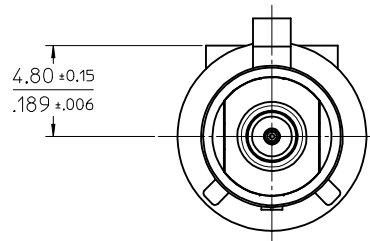
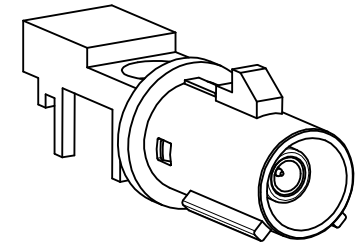
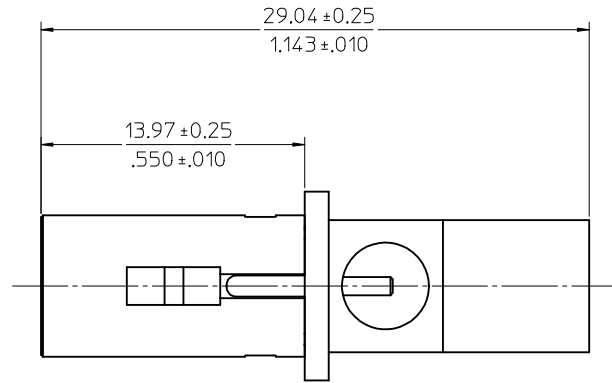
MATERIALS AND FINISHES

BODY ZINC ALLOY
PLATED TIN

CENTER CONTACT BRASS
PLATED GOLD

INSULATOR TEFLON

SHROUD NYLON 46 40%G.F.



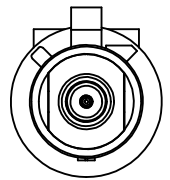
RECOMMENDED PCB LAYOUT

ADDED PCB LAYOUT TOLERANCE RF13-E029 IEC NO: URF2013-0152 DRWN:ELIN 2012/09/10 CHKD: APPR:MHUANG 2012/10/04 REV: A2	QUALITY SYMBOLS	GENERAL TOLERANCES (UNLESS SPECIFIED)	DIMENSION STYLE	SCALE	DESIGN UNITS	THIRD ANGLE PROJECTION
	$\nabla=0$ $\nabla=0$	mm INCH 4 PLACES ± .13 ± .005 3 PLACES ± .13 ± .005 2 PLACES ± .13 ± .005 1 PLACE ± .25 ± .010 ANGULAR ± 2°	MM/IN	5:1	METRIC	DRAWN BY DATE EVITA 2005/10/24 CHECKED BY DATE PENNY 2005/10/24 APPROVED BY DATE MHUANG 2010/03/26
						TITLE SMB FAKRA MOUNT JACK 50 OHMS PCB FAKRA-J/PCB
						MOLEX INCORPORATED DOCUMENT NO. SD-73396-046 SHEET NO. 1 OF 3

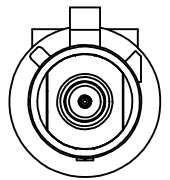
DRAFT WHERE APPLICABLE MUST REMAIN WITHIN DIMENSIONS

SEE SHEET 2

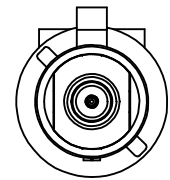
THIS DRAWING CONTAINS INFORMATION THAT IS PROPRIETARY TO MOLEX INCORPORATED AND SHOULD NOT BE USED WITHOUT WRITTEN PERMISSION



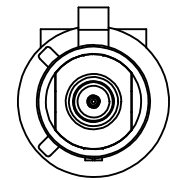
CODE - A



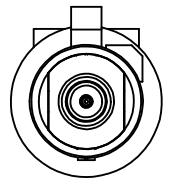
CODE - B



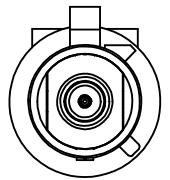
CODE - C



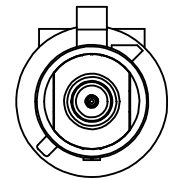
CODE - D



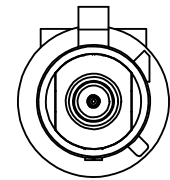
CODE - E



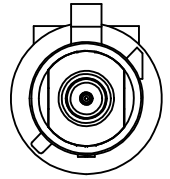
CODE - F



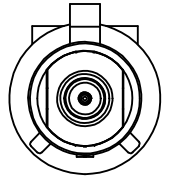
CODE - G



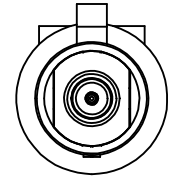
CODE - H



CODE - I



CODE - K



CODE - Z

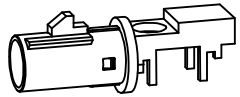
Z	WATER BLUE	73396-0470
K	CURRY YELLOW	73396-0469
I	BEIGE	73396-0468
H	VIOLET	73396-0467
G	GRAY	73396-0466
F	BROWN	73396-0465
E	GREEN	73396-0464
D	BORDEAUXVIOLET	73396-0463
C	BLUE	73396-0462
B	CREAM WHITE	73396-0461
A	BLACK	73396-0460
KEYING CODE	COLOR	PART NO.

UNLESS OTHERWISE SPECIFIED DIMS ARE MILLIMETERS AND ANGLES ARE DEGREES.

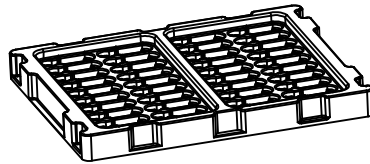
- $\sqrt{\text{A}}$ ALL OVER.
- NO CHATTER OR NON-UNIFORM SURFACE FINISH ALLOWED.
- PARTS TO BE FREE OF BURRS & SHARP EDGES 0.13(0.005) MAX BREAK.
- EXTERNAL THREADS TO BE ROLLED OR SINGLE POINT.
- DIAMETERS TO BE CONCENTRIC WITHIN 0.08(0.003) TIR.

SEE SHEET 1 EC NO: URF-2013-0152 DRW: INELIN 2012/09/10 CHKD: APPR: MHUANG 2012/10/04 REV: A2	QUALITY SYMBOLS ▽=0 ▽=0	GENERAL TOLERANCES (UNLESS SPECIFIED) <table border="1"> <tr> <th></th> <th>mm</th> <th>INCH</th> </tr> <tr> <td>4 PLACES</td> <td>± 0.13</td> <td>± 0.005</td> </tr> <tr> <td>3 PLACES</td> <td>± 0.25</td> <td>± 0.010</td> </tr> <tr> <td>2 PLACES</td> <td>± 0.38</td> <td>± 0.015</td> </tr> <tr> <td>1 PLACE</td> <td>± 0.51</td> <td>± 0.020</td> </tr> </table> ANGULAR ± 2 °		mm	INCH	4 PLACES	± 0.13	± 0.005	3 PLACES	± 0.25	± 0.010	2 PLACES	± 0.38	± 0.015	1 PLACE	± 0.51	± 0.020	DIMENSION STYLE MM/IN	SCALE 3:1	DESIGN UNITS METRIC	THIRD ANGLE PROJECTION
		mm	INCH																		
	4 PLACES	± 0.13	± 0.005																		
	3 PLACES	± 0.25	± 0.010																		
2 PLACES	± 0.38	± 0.015																			
1 PLACE	± 0.51	± 0.020																			
DRAWN BY DATE EVITA 2005/10/24		CHECKED BY DATE PENNY 2005/10/24		TITLE SMB FAKRA MOUNT JACK 50 OHMS PCB FAKRA-J/PCB																	
APPROVED BY DATE MHUANG 2010/03/26		MATERIAL NO. SEE TABLE		MOLEX INCORPORATED DOCUMENT NO. SD-73396-046																	
DRAFT WHERE APPLICABLE MUST REMAIN WITHIN DIMENSIONS		SIZE C		SHEET NO. 2 OF 3																	

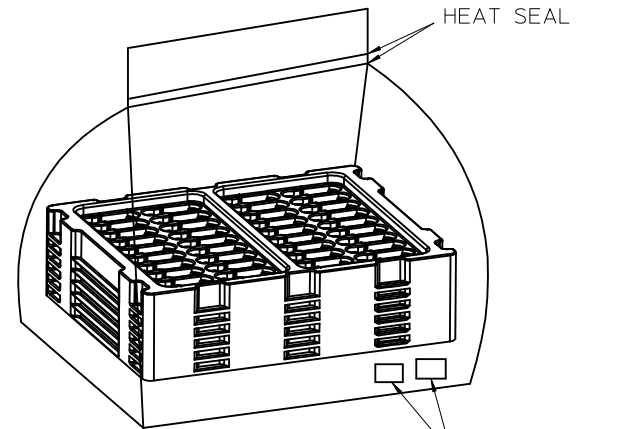
THIS DRAWING CONTAINS INFORMATION THAT IS PROPRIETARY TO MOLEX INCORPORATED AND SHOULD NOT BE USED WITHOUT WRITTEN PERMISSION



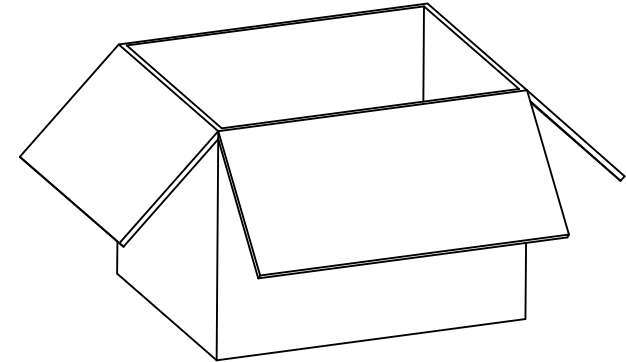
PART NO. 73396-046*



40 SET PER TYAY
TRAY P/N: 89707-0169



HDPE BAG



480 SET PER OUTER
CARTON BOX
P/N: 89499-9027

SEE SHEET 1 EC NO: URF2013-0152 DRAWN: LIN CHKD: APPR: MHUANG REV: A2	DESCRIPTION 2012/09/10 2012/10/04	QUALITY SYMBOLS	GENERAL TOLERANCES (UNLESS SPECIFIED)		DIMENSION STYLE	SCALE	DESIGN UNITS	THIRD ANGLE PROJECTION			
		▼=0 ▽=0	mm	INCH	MM/IN	2:1	METRIC				
			4 PLACES ± --- ± ---	3 PLACES ± --- ± ---	2 PLACES ± 0.13 ± ---	1 PLACE ± 0.25 ± ---	DRAWN BY EVITA	DATE 2005/10/24	TITLE SMB FAKRA MOUNT JACK 50 OHMS PCB FAKRA-J/PCB		
			ANGULAR ± 2 °		DRAFT WHERE APPLICABLE MUST REMAIN WITHIN DIMENSIONS		CHECKED BY PENNY	DATE 2005/10/24	APPROVED BY MHUANG		
					MATERIAL NO. SEE SHEET 2		DOCUMENT NO. SD-73396-046		SHEET NO. 3 OF 3		
THIS DRAWING CONTAINS INFORMATION THAT IS PROPRIETARY TO MOLEX INCORPORATED AND SHOULD NOT BE USED WITHOUT WRITTEN PERMISSION											