

MATERIALS AND FINISHES

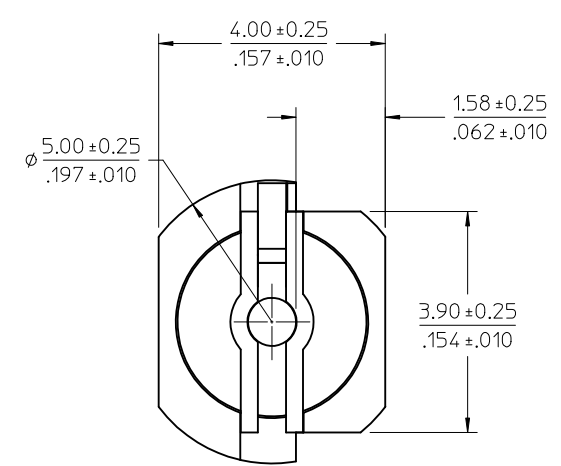
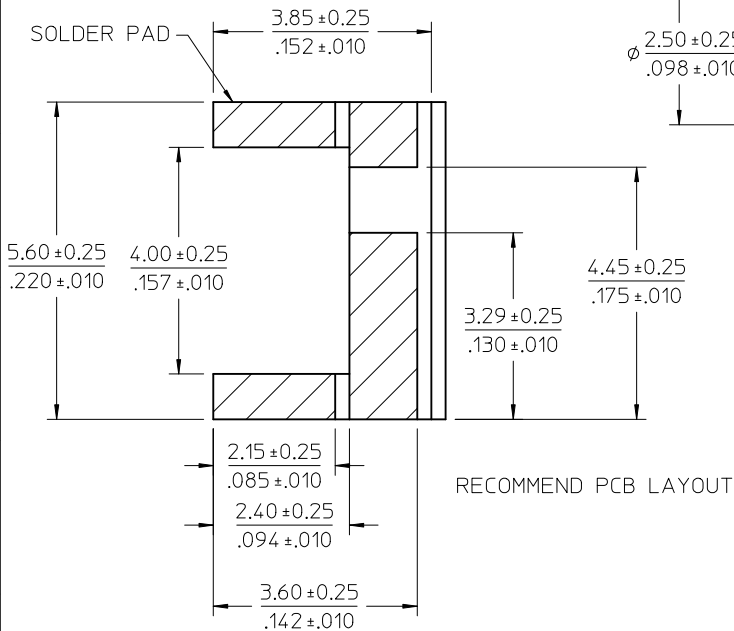
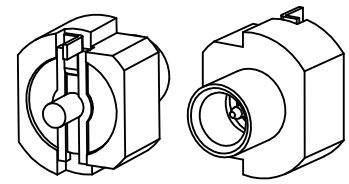
BODY,HOOD, BRASS
PLATED GOLD

CENTER CONTACT BRASS
PLATED GOLD

INSULATOR,RINS LCP OR EQUIVALENT

TAB STAINLESS STEEL
PLATED GOLD

SPRING STAINLESS STEEL



PART # 73253-5020

PS-73598-0560	ELECTRICAL/MECHANICAL
SPECIFICATION	DESCRIPTION

NEW PRODUCT	EC NO: URF2010-0349	2009/06/16
	DRWNLIN	2009/06/16
	CHKD:ALEX	2009/06/16
	APPR:MHUANG	2010/02/05
REV	DESCRIPTION	
A		

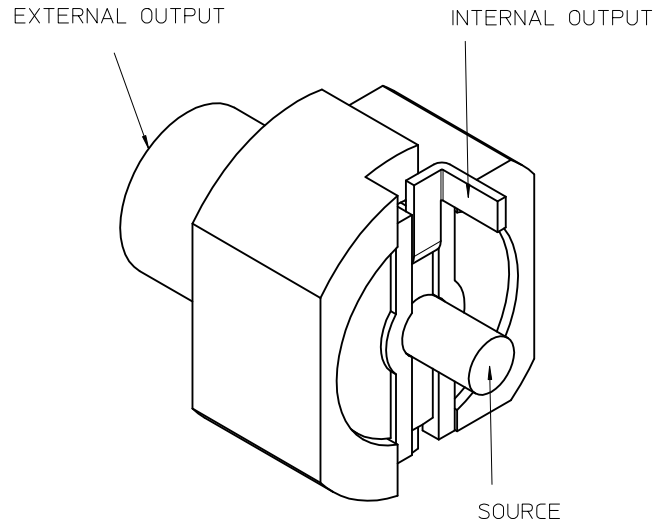
QUALITY SYMBOLS	▽=0
	▽=0

GENERAL TOLERANCES (UNLESS SPECIFIED)	mm	INCH
4 PLACES ±	---	---
3 PLACES ±	---	---
2 PLACES ±	---	---
1 PLACE ±	---	---
ANGULAR ± 2 °		
DRAFT WHERE APPLICABLE MUST REMAIN WITHIN DIMENSIONS		

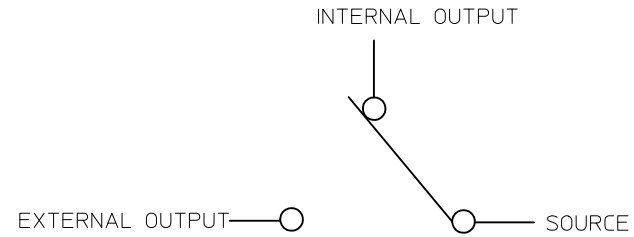
DIMENSION STYLE		SCALE
MM/IN		DESIGN UNITS
DRAWN BY		DATE
EVITA		2009/06/16
CHECKED BY		DATE
ALEX		2009/06/16
APPROVED BY		DATE
MHUANG		2010/02/05
MATERIAL NO.		DOCUMENT NO.
732535020		SD-73253-502
SIZE	SHEET NO.	
C	1 OF 2	

THIRD ANGLE PROJECTION	
TITLE	
SSMCX JACK SWITCH REVERSE EDGE LAUNCH SSMCX-J	
MOLEX INCORPORATED	
THIS DRAWING CONTAINS INFORMATION THAT IS PROPRIETARY TO MOLEX INCORPORATED AND SHOULD NOT BE USED WITHOUT WRITTEN PERMISSION	

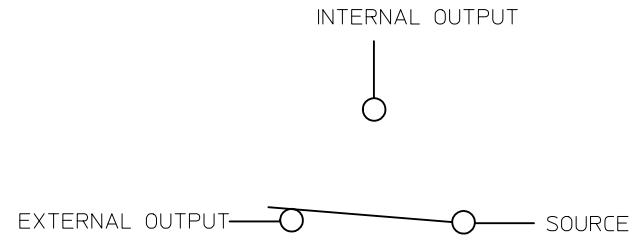
SWITCH FUNCTION



1. UNMATED



2. MATED



SEE SHEET 1 EC NO: URF2010-0349 DRWNLIN 2009/06/16 CHKD:ALEX 2009/06/16 APPR:MHUANG 2010/02/05 REV: A	QUALITY SYMBOLS	GENERAL TOLERANCES (UNLESS SPECIFIED)		DIMENSION STYLE	SCALE	DESIGN UNITS	THIRD ANGLE PROJECTION	
	$\nabla=0$ $\nabla=0$	mm	INCH	MM/IN	METRIC			
		4 PLACES ± --- ± ---	3 PLACES ± --- ± ---	DRAWN BY	DATE	TITLE		
		2 PLACES ± --- ± ---	1 PLACE ± --- ± ---	EVITA	2009/06/16	SSMCX JACK SWITCH REVERSE EDGE LAUNCH SSMCX-J		
		ANGULAR ± 2 °		CHECKED BY	DATE	MOLEX MOLEX INCORPORATED		
				ALEX	2009/06/16	MATERIAL NO. DOCUMENT NO. SHEET NO.		
				APPROVED BY	DATE	SEE SHEET 1 SD-73253-502 2 OF 2		
				MHUANG	2010/02/05	THIS DRAWING CONTAINS INFORMATION THAT IS PROPRIETARY TO MOLEX INCORPORATED AND SHOULD NOT BE USED WITHOUT WRITTEN PERMISSION		