

Kingbright Catalog

2005-2006

P 2 BACK LIGHT & SIDE VIEW
P 3 LIGHT PIPE

P 4-6 BASED LED LAMPS
P 7-8 CLUSTER

SIDE VIEW

Kingbright



Part No.	Material	λ D (nm)	Lens Type	Iv (mcd) @20mA		Viewing Angle 2 θ 1/2	Dimension
				Min.	Typ.		
KA-9219/2EC	GaAsP/GaP	625	water clear	18	50	100°	9.2mm x 1.9mm
KA-9219/2SRC	GaAlAs	640	water clear	70	200	100°	
KA-9219/2YC	GaAsP/GaP	588	water clear	10	20	100°	
KA-9219/2SGC	GaP	568	water clear	7	40	100°	
KA-1114/2EC-CC-L5	GaAsP/GaP	625	water clear	4	9	120°	11mm x 1.4mm
KA-1114/2YC-CC-L5	GaAsP/GaP	588	water clear	4	10	120°	
KA-1114/2SYC-CC-L5	InGaAlP	588	water clear	50	100	120°	
KA-1114/2SGC-CC-L5	GaP	568	water clear	7	16	120°	
KA-1114/2QBC-C-CC-L5	GaN	470	water clear	50	120	120°	
KA-1114/2PBC-CC-L5	InGaN	470	water clear	18	50	120°	

BACK LIGHT

Kingbright

Part No.	Material	λ D (nm)	Lens Type	Ev (lux) @80mA		VF	Dimension
				Min.	Typ.		
GLP-003/1608SURC	InGaAlP	628	water clear	69	103	1.9	
GLP-003/1608CGKC	InGaAlP	570	water clear	110	164.5	2.1	
GLP-003/1608PBC	InGaN	470	water clear	293	440	3.65	

NOTES:

1. All dimensions are in millimeters(inches).
2. Tolerance is $\pm 0.25\text{mm}(0.01")$ unless otherwise noted.

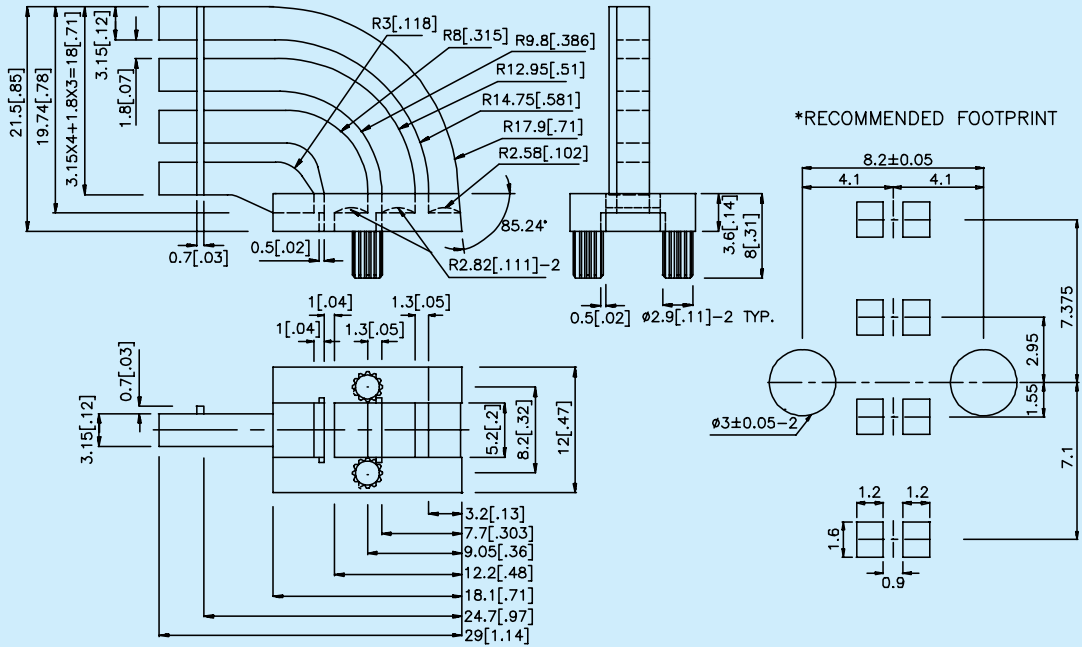
KL-05



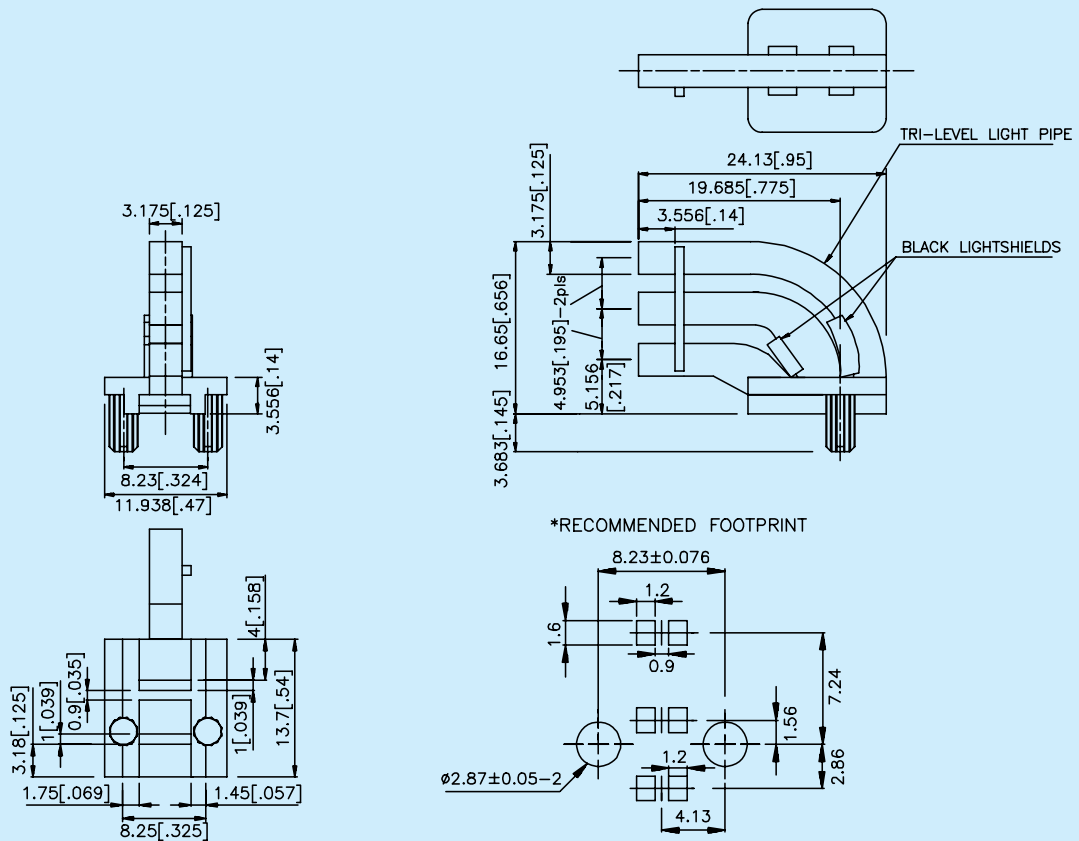
KL-07LS



KL-05



KL-07LS



NOTES:

1. All dimensions are in millimeters (inches).
2. Tolerance is ±0.25mm (0.01") unless otherwise noted.



Part No.	Material	λ D (nm)	Lens Type	Iv (mcd) V=6V *V=12V **V=28V		Viewing Angle 2θ1/2	Dimension
				Min.	Typ.		

BLFA052PBC-6V-P	InGaN	470	water clear	50	100	110°	5mm Flange Base
-----------------	-------	-----	-------------	----	-----	------	---------------------

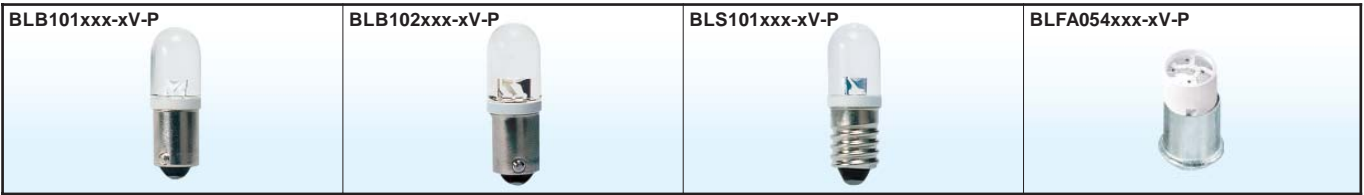
BLFA062PBC-6V-P	InGaN	470	water clear	70	170	110°	6mm Flange Base
-----------------	-------	-----	-------------	----	-----	------	---------------------

BLF041SURC-E-6V-P	InGaAlP	630	water clear	650	1500	30°	4mm Flange Base
BLF041SURC-E-12V-P	InGaAlP	630	water clear	*480	*1200	30°	
BLF041SURC-E-28V-P	InGaAlP	630	water clear	**380	**1000	30°	
BLF041SYC-6V-P	InGaAlP	588	water clear	380	800	30°	
BLF041SYC-12V-P	InGaAlP	588	water clear	*280	*700	30°	
BLF041SYC-28V-P	InGaAlP	588	water clear	**110	**280	30°	
BLF041MGC-6V-P	InGaAlP	568	water clear	280	800	30°	
BLF041MGC-12V-P	InGaAlP	568	water clear	*180	*700	30°	
BLF041MGC-28V-P	InGaAlP	568	water clear	**110	**350	30°	

BLF051SURC-E-6V-P	InGaAlP	630	water clear	650	1500	30°	5mm Flange Base
BLF051SURC-E-12V-P	InGaAlP	630	water clear	*480	*1200	30°	
BLF051SURC-E-28V-P	InGaAlP	630	water clear	**380	**1000	30°	
BLF051SYC-6V-P	InGaAlP	588	water clear	280	500	30°	
BLF051SYC-12V-P	InGaAlP	588	water clear	*180	*400	30°	
BLF051SYC-28V-P	InGaAlP	588	water clear	**110	**230	30°	
BLF051MGC-6V-P	InGaAlP	568	water clear	280	400	30°	
BLF051MGC-12V-P	InGaAlP	568	water clear	*180	*300	30°	
BLF051MGC-28V-P	InGaAlP	568	water clear	**110	**220	30°	

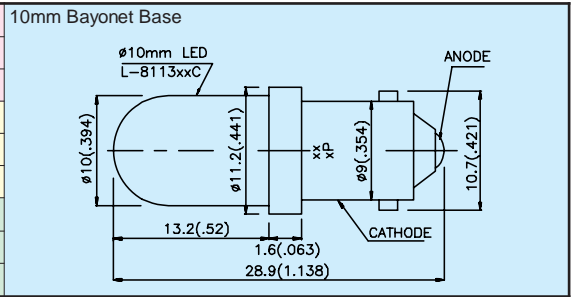
BLF052SURC-E-6V-P	InGaAlP	630	water clear	900	1200	45°	5mm Flange Base
BLF052SURC-E-12V-P	InGaAlP	630	water clear	*650	*1000	45°	
BLF052SURC-E-28V-P	InGaAlP	630	water clear	**480	**800	45°	
BLF052SYC-6V-P	InGaAlP	588	water clear	280	400	45°	
BLF052SYC-12V-P	InGaAlP	588	water clear	*180	*300	45°	
BLF052SYC-28V-P	InGaAlP	588	water clear	**110	**250	45°	
BLF052MGC-6V-P	InGaAlP	568	water clear	180	400	45°	
BLF052MGC-12V-P	InGaAlP	568	water clear	*110	*300	45°	
BLF052MGC-28V-P	InGaAlP	568	water clear	**70	**200	45°	

NOTES:
 1. All dimensions are in millimeters (inches).
 2. Tolerance is ±0.25mm (0.01") unless otherwise noted.

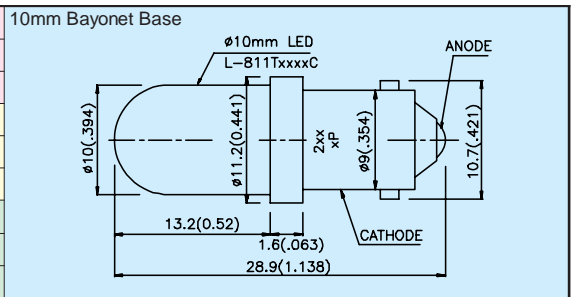


Part No.	Material	λ D (nm)	Lens Type	Iv (mcd) V=6V *V=12V **V=28V		Viewing Angle 2θ1/2	Dimension
				Min.	Typ.		

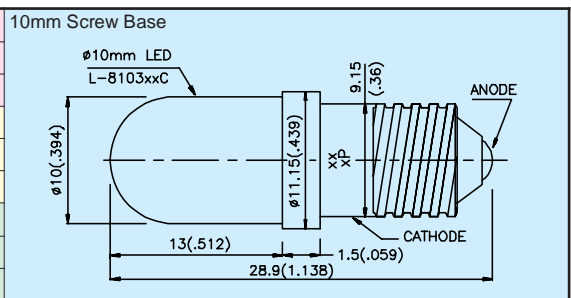
BLB101SURC-E-6V-P	InGaAlP	630	water clear	900	2200	20°
BLB101SURC-E-12V-P	InGaAlP	630	water clear	*650	*1800	20°
BLB101SURC-E-28V-P	InGaAlP	630	water clear	**480	**930	20°
BLB101SYC-6V-P	InGaAlP	588	water clear	650	1300	20°
BLB101SYC-12V-P	InGaAlP	588	water clear	*480	*1200	20°
BLB101SYC-28V-P	InGaAlP	588	water clear	**180	**380	20°
BLB101MGC-6V-P	InGaAlP	568	water clear	380	900	20°
BLB101MGC-12V-P	InGaAlP	568	water clear	*280	*800	20°
BLB101MGC-28V-P	InGaAlP	568	water clear	**110	**300	20°



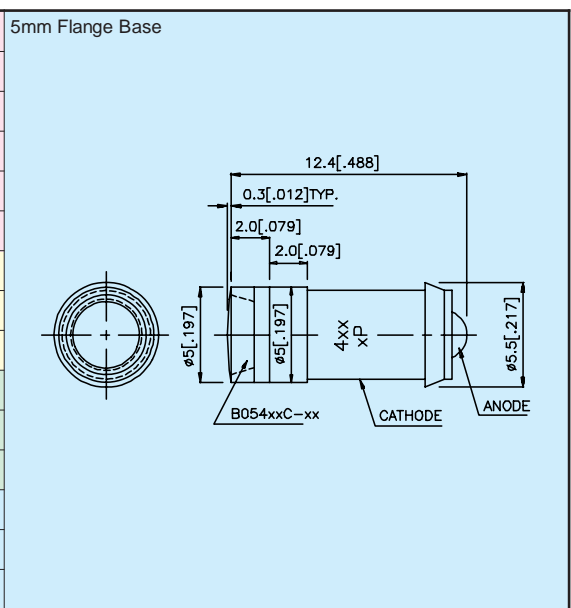
BLB102SURC-E-6V-P	InGaAlP	630	water clear	900	2200	40°
BLB102SURC-E-12V-P	InGaAlP	630	water clear	*650	*1800	40°
BLB102SURC-E-28V-P	InGaAlP	630	water clear	**480	**1300	40°
BLB102SYC-6V-P	InGaAlP	588	water clear	650	1300	40°
BLB102SYC-12V-P	InGaAlP	588	water clear	*480	*1200	40°
BLB102SYC-28V-P	InGaAlP	588	water clear	**380	**600	40°
BLB102MGC-6V-P	InGaAlP	568	water clear	380	900	40°
BLB102MGC-12V-P	InGaAlP	568	water clear	*280	*800	40°
BLB102MGC-28V-P	InGaAlP	568	water clear	**180	**400	40°



BLS101SURC-E-6V-P	InGaAlP	630	water clear	900	2200	20°
BLS101SURC-E-12V-P	InGaAlP	630	water clear	*650	*1800	20°
BLS101SURC-E-28V-P	InGaAlP	630	water clear	**480	**900	20°
BLS101SYC-6V-P	InGaAlP	588	water clear	650	1300	20°
BLS101SYC-12V-P	InGaAlP	588	water clear	*480	*1200	20°
BLS101SYC-28V-P	InGaAlP	588	water clear	**280	**350	20°
BLS101MGC-6V-P	InGaAlP	568	water clear	380	900	20°
BLS101MGC-12V-P	InGaAlP	568	water clear	*280	*800	20°
BLS101MGC-28V-P	InGaAlP	568	water clear	**110	**350	20°



BLFA054SURCK-6V-P	InGaAlP	635	water clear	280	510	110°
BLFA054SURCK-12V-P	InGaAlP	635	water clear	*280	*510	110°
BLFA054SURCK-28V-P	InGaAlP	635	water clear	**280	**510	110°
BLFA054SECK-6V-P	InGaAlP	601	water clear	380	760	110°
BLFA054SECK-12V-P	InGaAlP	601	water clear	*380	*760	110°
BLFA054SECK-28V-P	InGaAlP	601	water clear	**380	**760	110°
BLFA054SYCK-6V-P	InGaAlP	590	water clear	36	130	110°
BLFA054SYCK-12V-P	InGaAlP	590	water clear	*36	*130	110°
BLFA054SYCK-28V-P	InGaAlP	590	water clear	**36	**130	110°
BLFA054MGCK-6V-P	InGaAlP	570	water clear	180	460	110°
BLFA054MGCK-12V-P	InGaAlP	570	water clear	*180	*460	110°
BLFA054MGCK-28V-P	InGaAlP	570	water clear	**180	**460	110°
BLFA054PBC-6V-P	InGaN	470	water clear	70	200	110°
BLFA054PBC-12V-P	InGaN	470	water clear	*70	*180	110°
BLFA054PBC-28V-P	InGaN	470	water clear	**28	**60	110°



NOTES:

1. All dimensions are in millimeters (inches).
2. Tolerance is ±0.25mm (0.01") unless otherwise noted.

BLFA064xxx-xV-P



BLS102SURC-A110



Part No.	Material	λ D (nm)	Lens Type	Iv (mcd)		Viewing Angle	Dimension
				V=6V *V=12V Min.	**V=28V **V=28V Typ.		
BLFA064SURCK-6V-P	InGaAlP	635	water clear	650	1100	110°	6mm Flange Base
BLFA064SURCK-12V-P	InGaAlP	635	water clear	*650	*1100	110°	
BLFA064SURCK-28V-P	InGaAlP	635	water clear	**650	**1100	110°	
BLFA064SECK-6V-P	InGaAlP	601	water clear	900	1500	110°	
BLFA064SECK-12V-P	InGaAlP	601	water clear	*900	*1500	110°	
BLFA064SECK-28V-P	InGaAlP	601	water clear	**900	**1500	110°	
BLFA064SYCK-6V-P	InGaAlP	590	water clear	110	260	110°	
BLFA064SYCK-12V-P	InGaAlP	590	water clear	*110	*260	110°	
BLFA064SYCK-28V-P	InGaAlP	590	water clear	**110	**260	110°	
BLFA064MGCK-6V-P	InGaAlP	570	water clear	110	240	110°	
BLFA064MGCK-12V-P	InGaAlP	570	water clear	*110	*240	110°	
BLFA064MGCK-28V-P	InGaAlP	570	water clear	**110	**240	110°	
BLFA064PBC-6V-P	InGaN	470	water clear	70	150	110°	
BLFA064PBC-12V-P	InGaN	470	water clear	*300	*650	110°	
BLFA064PBC-28V-P	InGaN	470	water clear	**170	**240	110°	

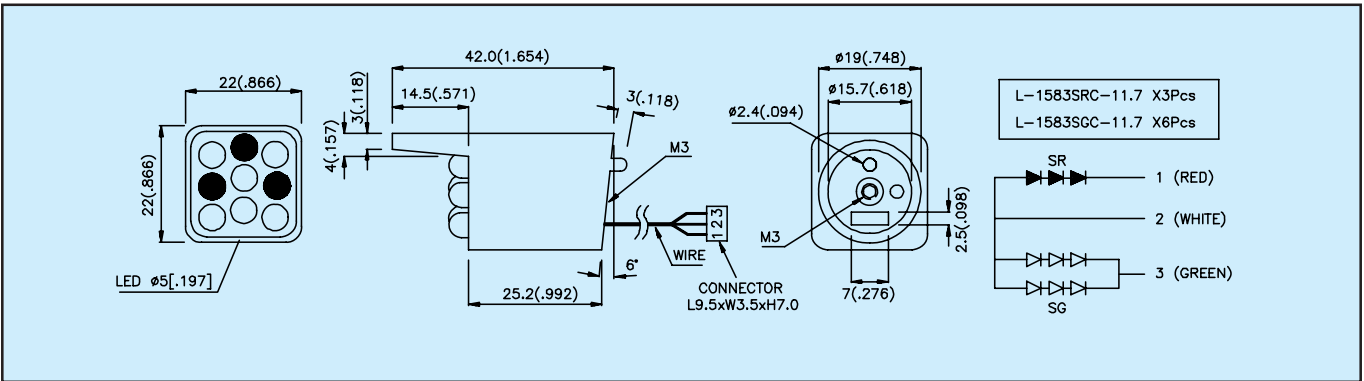
Part No.	Material	λ D (nm)	Lens Type	Iv (mcd)		Viewing Angle	Dimension
				AC=110V Min.	Typ.		
BLS102SURC-A110	InGaAlP	628	water clear	380	1400	25°	10mm Screw Base

NOTES:

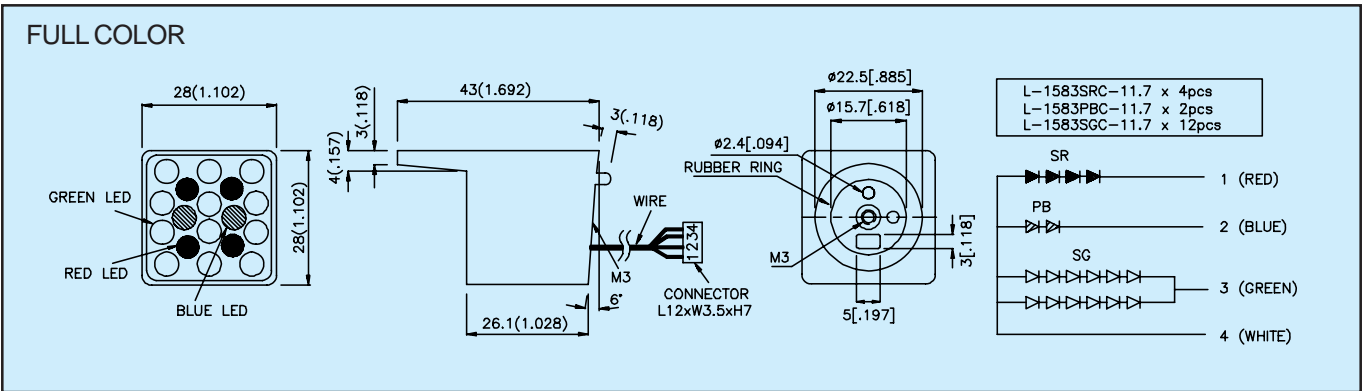
1. All dimensions are in millimeters(inches).
2. Tolerance is $\pm 0.25\text{mm}(0.01")$ unless otherwise noted.



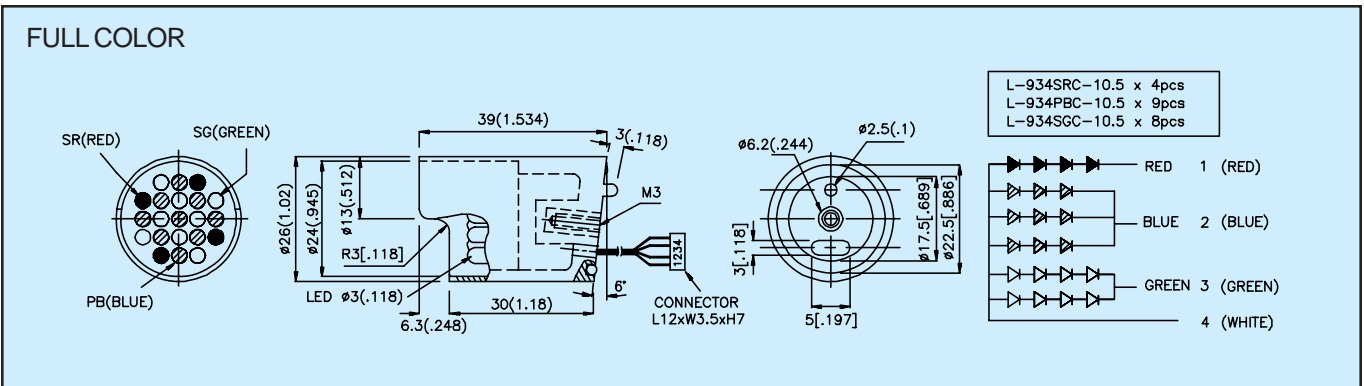
Part No.	Material	λ D (nm)	Lens Type	Iv (mcd)		Viewing Angle 2θ1/2	IF(mA)
				Min.	Typ.		
BL0508-09-73	GaAlAs	640	water clear	480	1200	40°	20
	GaP	568	water clear	380	800	40°	40



BL0709-18-349	GaAlAs	640	water clear	900	1800	40°	20
	InGaN	470	water clear	280	650	40°	20
	GaP	568	water clear	650	1200	40°	40



BL0104-21-350	GaAlAs	640	water clear	650	1800	40°	20
	InGaN	470	water clear	2800	3700	40°	60
	GaP	568	water clear	480	1200	40°	40



- NOTES:
 1. All dimensions are in millimeters(inches).
 2. Tolerance is ±0.25mm(0.01") unless otherwise noted.

