

Molex's heat sinks for LED array holders provide fast, effective cooling via a highly-efficient heat-dissipating design, ensuring the maximum life of LED arrays

Molex's Heat Sinks enable customers to install Molex LED Array Holders quickly into fixtures and allow for field replacements and facilitating upgrades to current or existing applications. Molex Heat Sinks are designed to ensure that proper heat dissipation is achieved when installing any of the <50.00mm diameter Molex LED array holders.

These heat sinks will be pre-drilled and tapped to accommodate screws needed to attach the holder; this will minimize the risk of cracking when drilling holes using non pre-drilled products. This will also provide an easy path for wiring with a designated wire route through the Heat Sink to power the application.

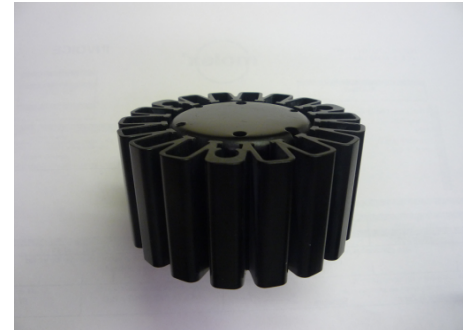
For more information visit: www.molex.com/link/heatsinkarray.html.

FEATURES AND BENEFITS

- Heat sink made from highly-efficient drawn-metal and extrusion process allows for fast and effective cooling of LED arrays and provides proper air flow for heat dissipation and improves the performance and life of the LED array
- Exclusively designed to hold Molex LED array holders which simplifies the array-to-heat-sink installation process when using Molex LED array holders and provides a low-cost cooling method for LED lighting applications that use Molex <50.00mm diameter array holders
- Accommodates all 50.00mm (1.97") diameter or smaller Molex LED array holders including 180150, 180160, 180220 series which is ideal for lamp and small-fixture applications or retrofit/rework designs
- Pre-drilled wire routes for powering the LED application allows flexibility and pre-determined path for wiring or powering LED arrays
- Pre-drilled and tapped M3 screw holes ensure simple mounting of the LED array and holder to heat sink
- 15 to 20W of power dissipation at +25°C ambient condition allows for effective heat dissipation for all 50.00mm (1.97") diameter or smaller Molex LED array holders
- Available in three depths: 40.00, 60.00, 80.00mm (1.57, 2.36, 3.15") allows for additional heat dissipation depending on the ambient condition of the application
- Available in un-treated or black anodized aluminum which provides a clean, finished look for lighting applications

PRELIMINARY DATASHEET

Heat Sinks for LED Array Holders 80.00mm (3.15") Diameter

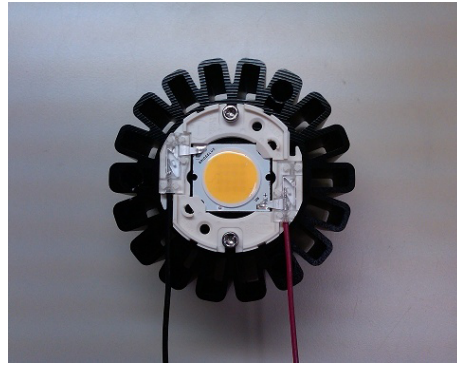
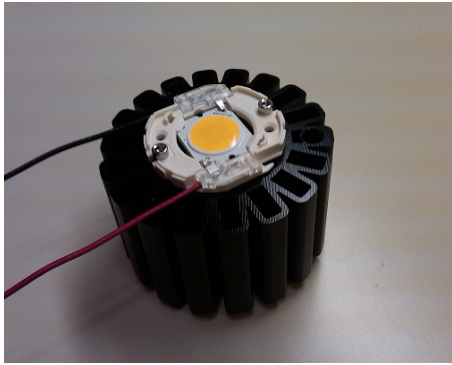


*Heat Sink for Molex LED Array Holders (Front View)
80.00mm (3.15") diameter
40.00mm (1.57") depth
pre-drilled and tapped screw holes*



*Heat Sink for Molex LED Array Holders (Top View)
80.00mm (3.15") diameter
40.00mm (1.57") depth
pre-drilled and tapped screw holes*

ADDITIONAL PRODUCT FEATURES



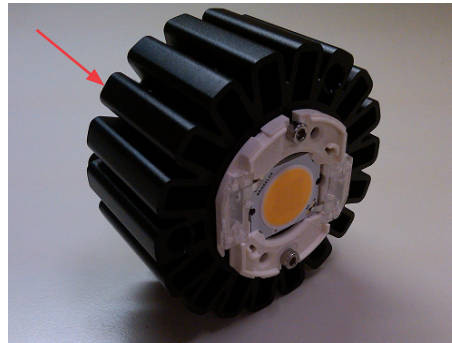
PRELIMINARY DATASHEET

Heat Sinks for LED Array Holders 80.00mm (3.15") Diameter

Molex LED Array Holder mounted to Heat Sink in a typical small-fixture application
NOTE: not for use with Helieon® modules



Pre-drilled and tapped mounting holes



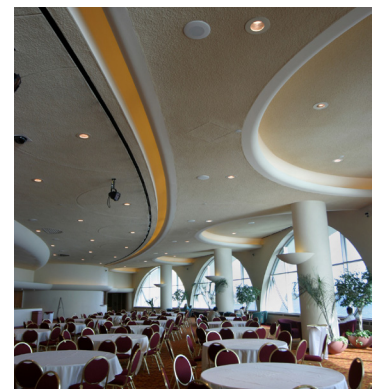
Small form factor allows for easy integration or retrofit applications



Available in three depths:
40.00, 60.00, 80.00mm
(1.57, 2.36, 3.15")

APPLICATIONS

- All Molex <50.00mm (1.97") diameter LED array holders
 - Downlighting
 - Track
 - Pendants
 - Linear
 - Architectural
 - Decorative
 - Area Lighting
 - Roadway
 - Parking lots
 - Wall packs



Recessed Downlighting in Commercial Applications

Note: Molex reserves the right to delay or cancel production of the depicted product without additional notice.
Please contact your Molex customer service representative for product availability.