

.374" PCB Tri-Barrier Terminal Blocks

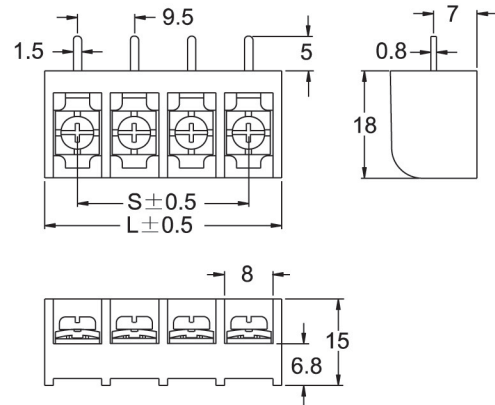
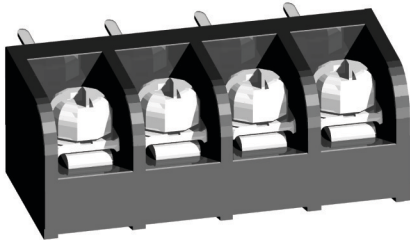
DECA®
SwitchLab

TYPE:T44

Pitch:9.50mm

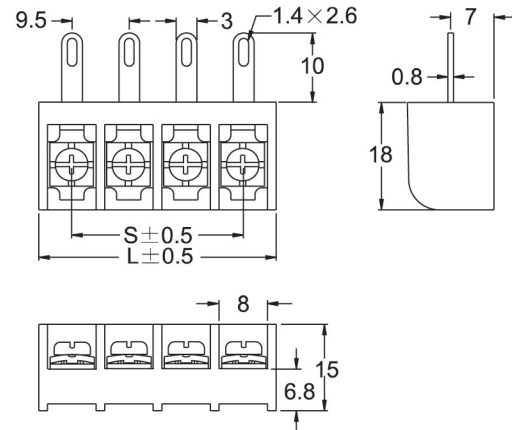
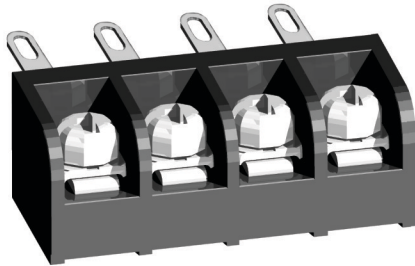
T44-BB11-04

Terminal style: B11



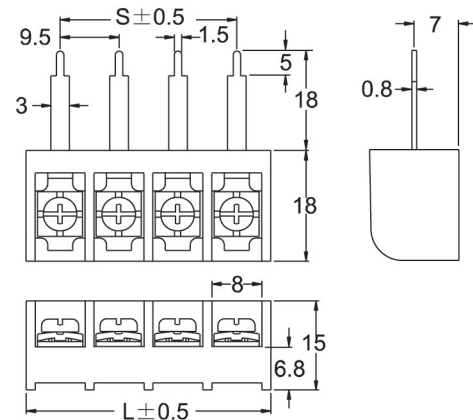
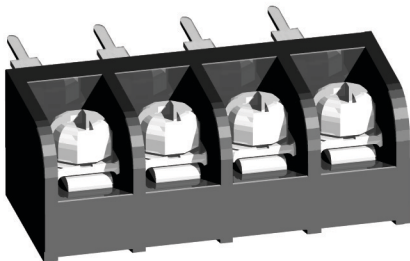
T44-BB21-04

Terminal style: B21



T44-BB32-04

Terminal style: B32



Poles	2	3	4	5	6	7	8	9	10	11	12	13	14	15	16
L(mm)	20.4	29.9	39.4	48.9	58.4	67.9	77.4	86.9	96.4	106	115	125	134	144	153
S(mm)	9.50	19.0	28.5	38.0	47.5	57.0	66.5	76.0	85.5	95.0	105	114	124	133	143
Poles	17	18	19	20	21	22	23	24	25	26					
L(mm)	163	172	182	191	201	210	220	229	239	248					
S(mm)	152	162	171	181	190	200	209	219	228	238					

.374" PCB Tri-Barrier Terminal Blocks

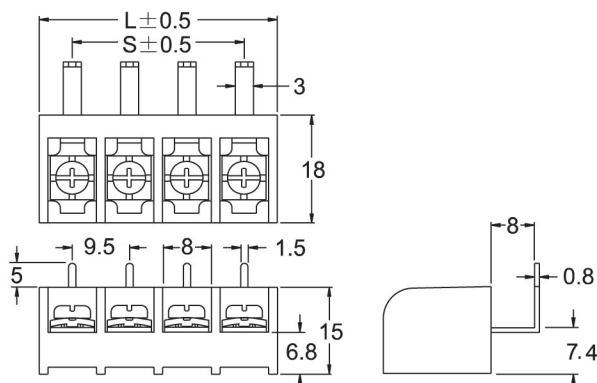
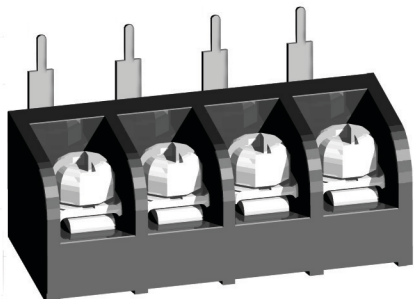
DECA[®]
SwitchLab

TYPE:T44

Pitch:9.50mm

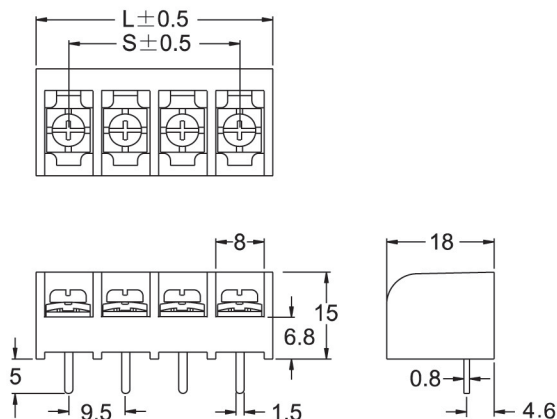
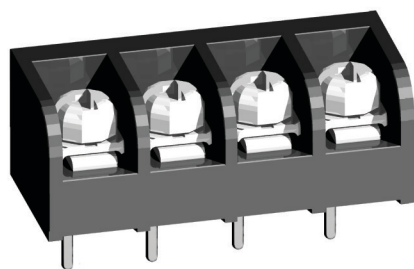
T44-BC36-04

Terminal style: C36



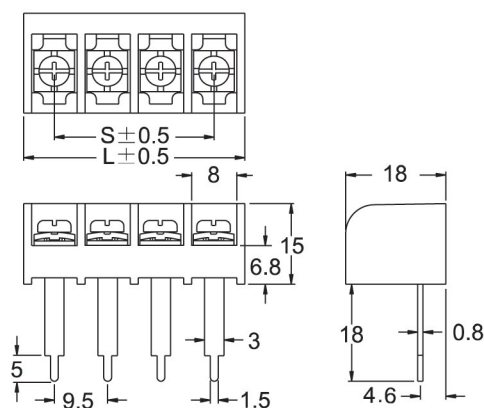
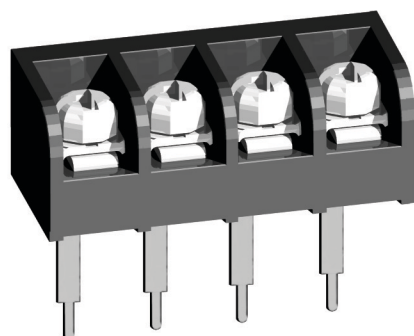
T44-BS11-04

Terminal style: S11



T44-BS32-04

Terminal style: S32



Poles	2	3	4	5	6	7	8	9	10	11	12	13	14	15	16
L(mm)	20.4	29.9	39.4	48.9	58.4	67.9	77.4	86.9	96.4	106	115	125	134	144	153
S(mm)	9.50	19.0	28.5	38.0	47.5	57.0	66.5	76.0	85.5	95.0	105	114	124	133	143
Poles	17	18	19	20	21	22	23	24	25	26					
L(mm)	163	172	182	191	201	210	220	229	239	248					
S(mm)	152	162	171	181	190	200	209	219	228	238					