

# BP320240C

## Feature

1. FSTN LCD, TAB IC and PCB package
2. Built-in controller SED1335
3. +3V ~ +5V single power supply, with built-in positive voltage for LCD driving
4. 1/240 duty cycle
5. Option: EL B/L & EL inverter
6. Option: Touch panel & touch panel controller ADS7846

## Mechanical Data

Item	Standard Value	Unit
Module Dimension	85.0 x 98.2	mm
Viewing Area	62.2 x 81.8	mm
Dot Size	0.225 x 0.225	mm
Dot Pitch	0.24 x 0.24	mm

## Pin Assignment

Pin	Symbol	Function
1	/RST	Reset signal
2	/RD	80s:read signal/68s:enable signal (E)
3	/WR	80s:write signal/68s: R/W signal
4	/CS	Chip select
5	Ao	Data type select
6~13	DB0-7	Data bus line
14	Vdd	Power supply (+3V ~ +5V)
15	Vss	Power supply (GND)
16	Vadj	Contrast Adjustment
17	EL ON	H:EL ON
18	SK*/X1**	Serial clock/touch panel left signal (X axis)
19	D0*/X2**	Data output/touch panel right signal (X axis)
20	D1*/Y1**	Data input/touch panel upper signal (Y axis)
21	CS*/Y2**	Chip select/touch panel lower signal (Y axis)
22	INT	Interrupt signal for Touch Panel controller
23~24	EL1- EL2	Power supply for EL B/L (for external EL inverter)
Remark	*Built-in touch panel controller/oller/ ** External touch panel controller	



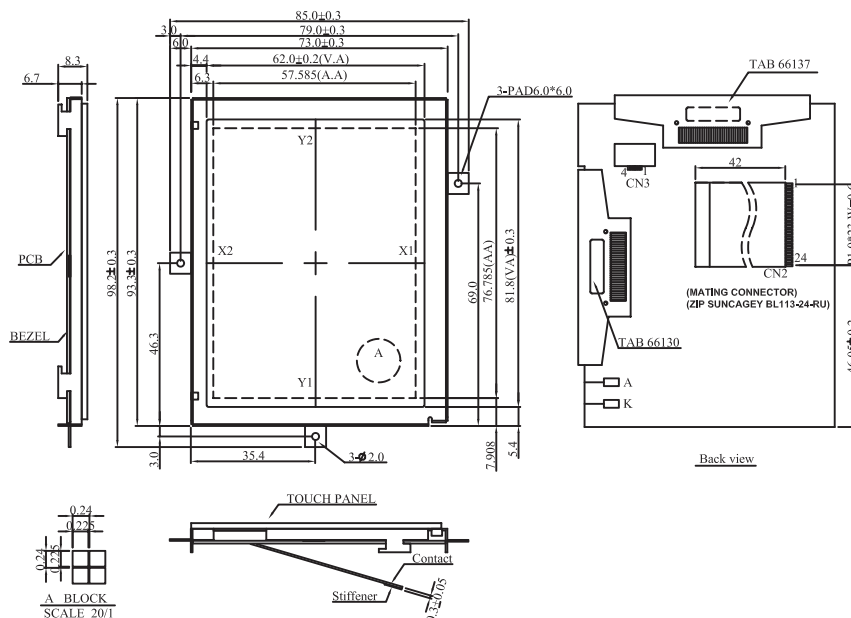
(Options : Frame without ears)



## Electronic Characteristics

Item	Symbol	Condition	Typical Value	Unit
Input Voltage	Vdd	Vdd = +5.0V	5.0	V
Supply Current	Idd	Vdd = +5.0V	20	mA
LCD Driving Voltage	Vlcd	Vdd-Vadj	4.5	V
Built-in EL Inverter Supply Current	Iel	Vel = +3.3V	50	mA

## Dimension



The non-specified tolerance of dimension is ±0.3 mm .