

BP320240E-20b

Feature

1. FSTN LCD, TAB IC and PCB package
2. Built-in controller SED 13700,USB Interface
3. +3V ~ +5V single power supply,
with built-in positive voltage for LCD driving
4. 1/240 duty cycle
5. Option: LED/white
6. Option: Touch panel & touch panel controller

Mechanical Data

Item	Standard Value	Unit
Module Dimension	85.0 x 98.2	mm
Viewing Area	62.0 x 81.8	mm
Dot Size	0.225 x 0.225	mm
Dot Pitch	0.24 x 0.24	mm

Pin Assignment

Pin	Symbol	Function
1	VDD+5	Power Supply for LCD Operating
2	D-	Data V -
3	D+	Data V +
4	GND	Ground

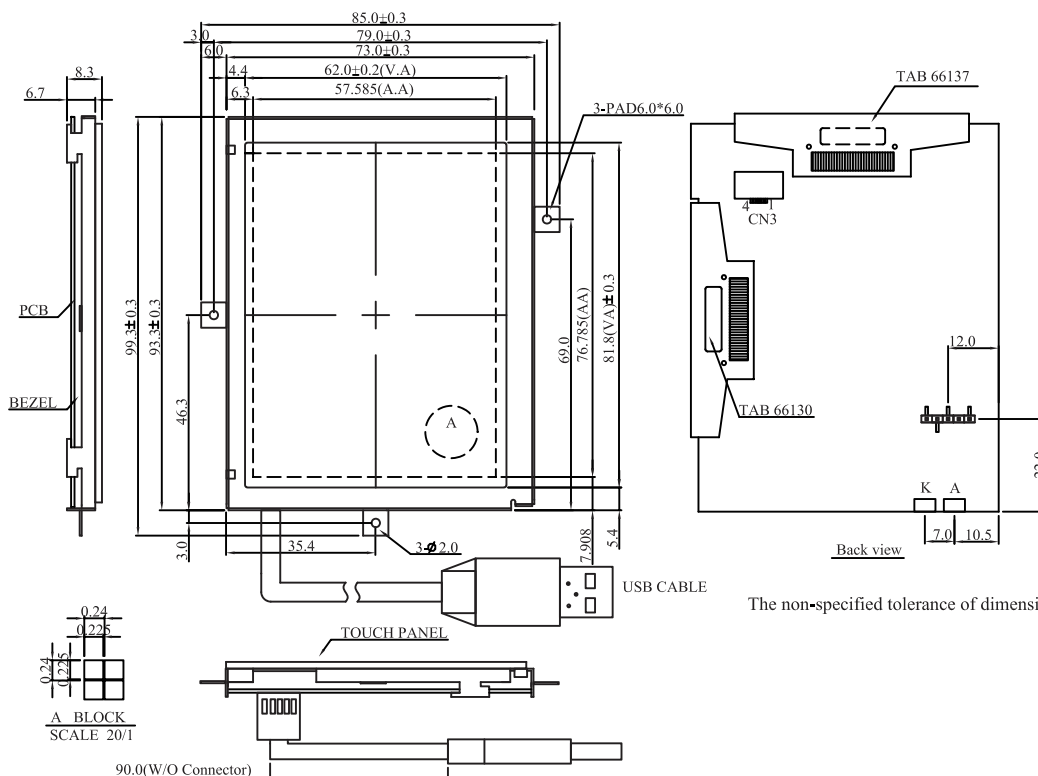


(Options : Frame without ears)

Electronic Characteristics

Item	Symbol	Condition	Typical Value	Unit
Input Voltage	Vdd	Vdd = +3V	3.0~5.0	V
Supply Current	Idd	Vdd = +3V	15	mA
LCD Driving Voltage	Vlcd		4.5	V
LED Supply Current	I led	Vled = +3.3V	55	mA

Dimension



The non-specified tolerance of dimension is ±0.3 mm .