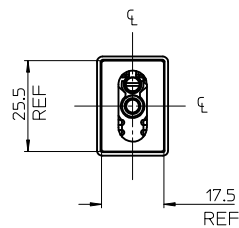
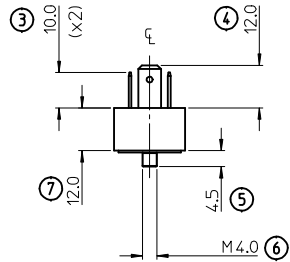
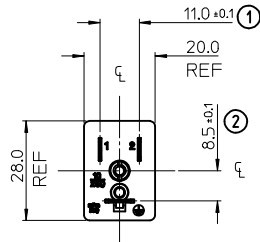
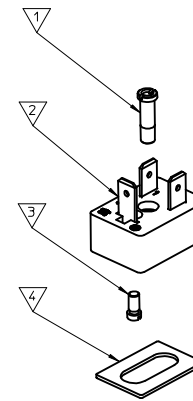


Part No	MPM Part No	DESCRIPTION
1210120046	B222000N1	BAS.RETT.222 NERA CN.FIX.
1210120047	B222000N2	PLATTE 2+ERDE 1-ZENTRAL
1210120048	B222000W2	BAS.222 NERA V0 CN.FIX.
1210120138	B222000N0	BAS RETT.222 NERA CN.FIX.
1210120176	B222000W2SA	BAS.222 NERA V0 CN.FIX. UL LISTED



ITEM	DESCRIPTION
1	CENTRE SCREW
2	BASE
3	EARTH SCREW
4	GASKET



B222000N2\*\*

SERIES \_\_\_\_\_  
 B22= FORM A BASE SERIES  
 POLES \_\_\_\_\_  
 2= 2 POLE  
 CURVED BASE DIAMETER \_\_\_\_\_  
 000 = FLAT  
 MATERIAL AND HOUSING COLOR \_\_\_\_\_  
 G= PA6 GRAY, N= PA6 BLACK, W= PA6 BLACK V0  
 GASKET & SCREWS \_\_\_\_\_  
 1= NBR INTEGRATED GASKET & SCREWS  
 2= NBR FLAT GASKET & SCREWS  
 4= SILICON FLAT GASKET & SCREWS  
 0= WITHOUT GASKET AND SCREWS  
 ADDITIONAL CODES \_\_\_\_\_  
 SA= UL LISTED

NOTES

- FOR SPECIFIC PART NUMBERS PLEASE CONTACT SALES OR CONSULT THE INTELLIGENT PART NUMBERS IN THE TABLE ATTACHED
- PRODUCT SPEC: SEE PS-121201-001
- PACKAGING SPEC: SEE PK-121012-B22

LAST INSPECTION NUMBER USED 7

<b>ADDED OPTION</b> EC NO: IFC2013-0495 DRAWN BY: DRW:NGSHEA 2012/10/08 CHKD:SMCGREVV 2012/10/10 APPR:STGRIFLIN 2012/10/19	QUALITY SYMBOLS ▽=0 ▽=0	GENERAL TOLERANCES (UNLESS SPECIFIED)		DIMENSION STYLE <b>MM ONLY</b>		SCALE <b>1:1</b>	DESIGN UNITS <b>METRIC</b>	THIRD ANGLE PROJECTION	
		4 PLACES ± --- ± --- 3 PLACES ± --- ± --- 2 PLACES ± 0.10 ± --- 1 PLACE ± 0.20 ± --- ANGULAR ± 2 °	mm INCH ± --- ± --- ± --- ± --- ± --- ± ---	DRAWN BY DMAHER_WEU	DATE 2010/03/18	TITLE <b>B22 SERIES BASES</b>		MOLEX INCORPORATED	
B REV	DESCRIPTION	DRAFT WHERE APPLICABLE MUST REMAIN WITHIN DIMENSIONS		APPROVED BY JWALLACE		DATE 2010/03/24	DOCUMENT NO. <b>SD-121012-047</b>		SHEET NO. 1 OF 1
		SEE TABLE		MATERIAL NO.		THIS DRAWING CONTAINS INFORMATION THAT IS PROPRIETARY TO MOLEX INCORPORATED AND SHOULD NOT BE USED WITHOUT WRITTEN PERMISSION			