

MATERIAL AND FINISHES:

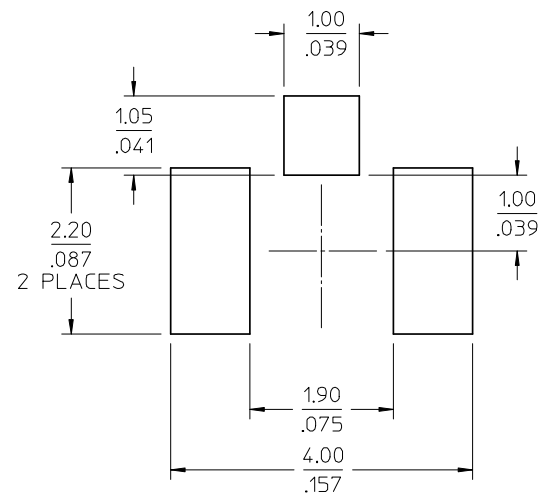
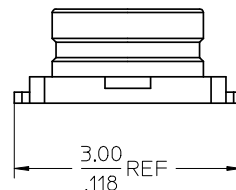
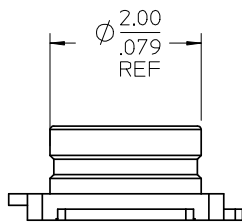
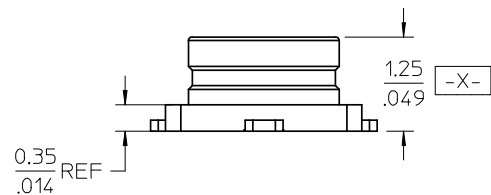
BASE: LCP  
COLOR: IVORY

CONTACT: PHOSPHOR BRONZE(JIS 5191-SH)  
PLATED GOLD

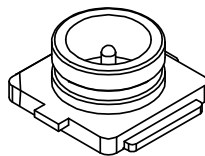
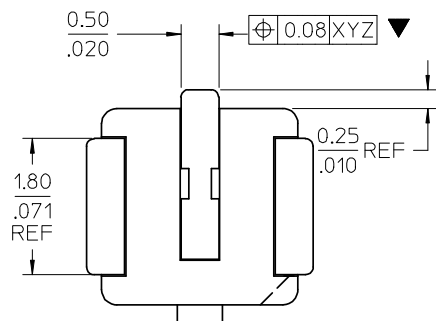
OUTER CONTACT PHOSPHOR BRONZE(JIS 5191-SH)  
PLATED GOLD

NOTE : OPTION TO NEW TOOLING FOR IMPROVING ORIENTATION OF PACKING

WILL WITHSTAND REFLOW TEMPERATURE OF 265 DEG C ±5 DEG



RECOMMEND PCB LAYOUT



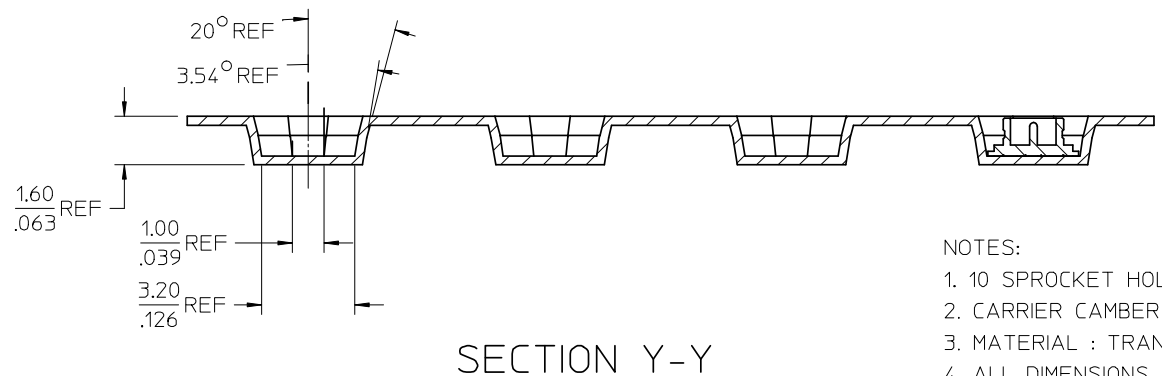
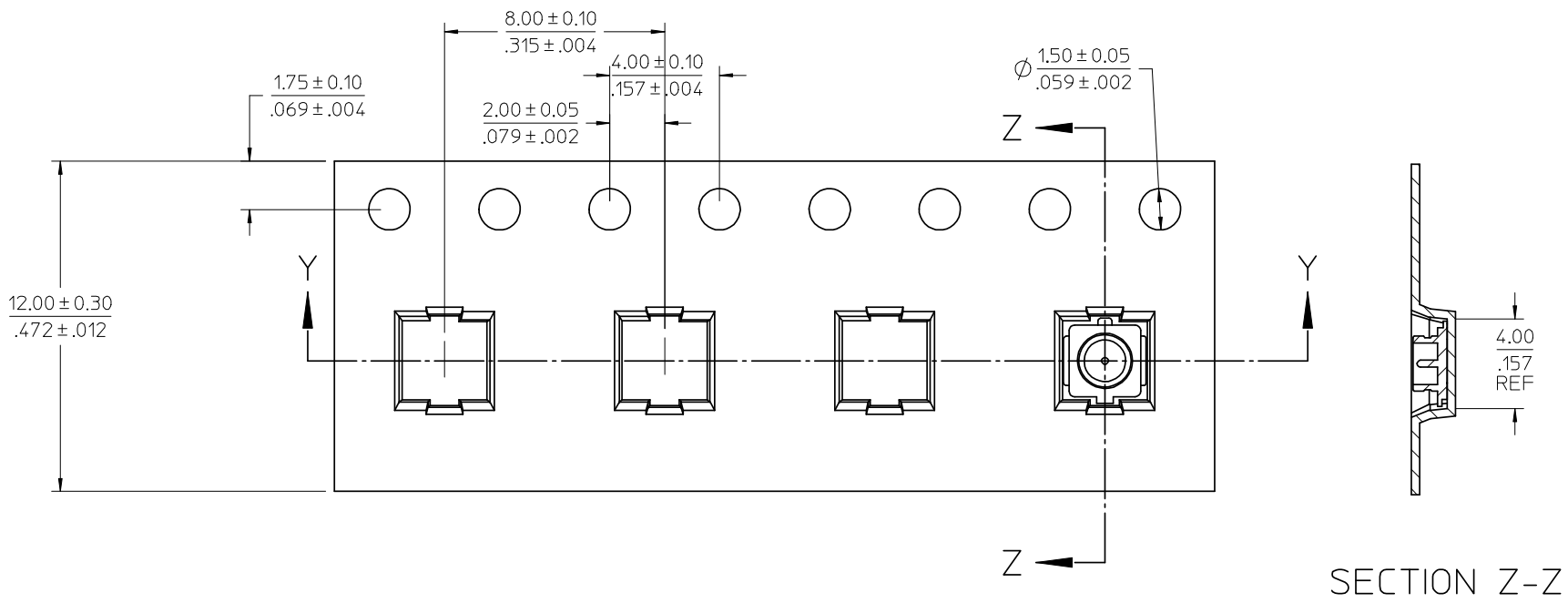
73412-0114	TAPE AND REEL (1K/REEL)
73412-0112	73412-0110, 10 PIECES PER BAG IN TAPE
73412-0110	TAPE AND REEL ( 5K/REEL)
PART NO.	PACKAGING

CHG: ADD PART/NO. 73412-0114 FOR PACKAGING 1K/REEL EC NO: URF2009-0035 DRWN:YCHENG 2008/07/31 CHKD: 2008/08/04 APPR:MHUANG 2008/08/05 REV:	QUALITY SYMBOLS
	▼=0 ▽=0

GENERAL TOLERANCES (UNLESS SPECIFIED)	DIMENSION STYLE	SCALE	DESIGN UNITS	THIRD ANGLE PROJECTION
	MM/IN		METRIC	
4 PLACES ± --- ± ---	mm INCH	DRAWN BY	DATE	TITLE
3 PLACES ± --- ± ---		DARRY	2003/1/27	MICRO COAXIAL CONNECTOR RECEPTACLE VERTICAL
2 PLACES ± 0.25 ± ---		CHECKED BY	DATE	
1 PLACE ± 0.13 ± ---		JOHNSON	2003/1/27	
ANGULAR ± 2 °		APPROVED BY	DATE	
		MISEN	2003/1/27	
DRAFT WHERE APPLICABLE MUST REMAIN WITHIN DIMENSIONS	SEE TABLE	MATERIAL NO.	DOCUMENT NO.	SHEET NO.
				1 OF 2

MOLEX INCORPORATED SD-73412-011
------------------------------------

THIS DRAWING CONTAINS INFORMATION THAT IS PROPRIETARY TO MOLEX INCORPORATED AND SHOULD NOT BE USED WITHOUT WRITTEN PERMISSION
---



- NOTES:
- 10 SPROCKET HOLE PITCH CUMULATIVE TOLERANCE  $\pm 0.20\text{mm}$
  - CARRIER CAMBER IS WITH 1mm IN 1000mm
  - MATERIAL : TRANSPARENT POLYSTYRENE ALLOY
  - ALL DIMENSIONS MEET EIA-481-1 REQUIREMENT
  - THICKNESS:  $0.30 \pm 0.05\text{mm}$
  - PACKING LENGTH PER 22" REEL (122.5 Meters)
  - COMPONENT LOAD PER 13" REEL (5,000 PCS)

SECTION Y-Y

SECTION Z-Z

CHG: SEE SHEET 1	EC NO: URF2009-0035 2008/07/31 DRAWN: CHENG CHKD: 2008/08/04 APPR: MHIUANG 2008/08/05	QUALITY SYMBOLS ▽=0 ▽=0	GENERAL TOLERANCES (UNLESS SPECIFIED)		DIMENSION STYLE MM/IN		SCALE	DESIGN UNITS METRIC	THIRD ANGLE PROJECTION	
			mm	INCH	DRAWN BY DARRY	DATE 2003/1/27	TITLE MICRO COAXIAL CONNECTOR RECEPTACLE VERTICAL			
			4 PLACES ± ---	± ---	CHECKED BY JOHNSON	DATE 2003/1/27	MOLEX INCORPORATED			
			3 PLACES ± ---	± ---	APPROVED BY MISEN	DATE 2003/1/27	SD-73412-011		SHEET NO. 2 OF 2	
			2 PLACES ± 0.25	± ---	MATERIAL NO. SEE SHEET 1		DOCUMENT NO.			
			1 PLACE ± 0.13	± ---	DRAFT WHERE APPLICABLE MUST REMAIN WITHIN DIMENSIONS		THIS DRAWING CONTAINS INFORMATION THAT IS PROPRIETARY TO MOLEX INCORPORATED AND SHOULD NOT BE USED WITHOUT WRITTEN PERMISSION			
			ANGULAR ± 2 °							