

MATERIALS AND FINISHES

BODY BRASS  
PLATED TIN

CENTER CONTACT BRASS  
PLATED GOLD

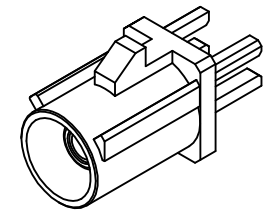
OUTER CASING HIGH TEMPERATURE PLASTIC

INSULATOR: TEFLON

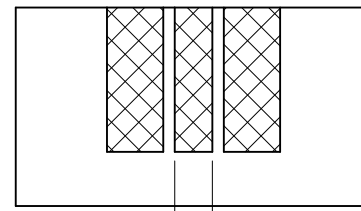
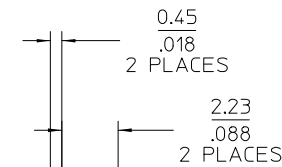
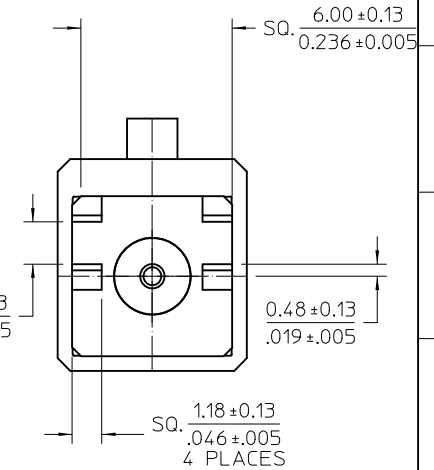
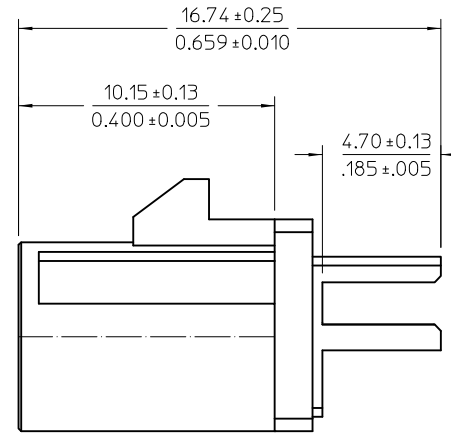
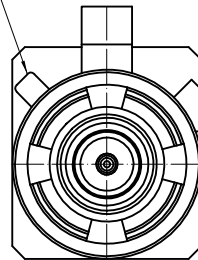
RETENTION SPECIFICATION:

THE FAKRA CONNECTOR SHROUD WILL WITHSTAND  
A LONGITUDINAL FORCE OF 110 N(24.75 LBS)

PACKAGING BY TRAY



FAKRA CONNECTOR  
CODE B SHOWN



RECOMMENDED PCB LAYOUT

PRE-RELEASE  
REFERENCE  
USE ONLY

PS-89675-3310	PRODUCT SPEC.
MIL-STD-348A, FIG. 311.1	INTERFACE
SPECIFICATION	DESCRIPTION

ADDED RECOMMENDED  
PCB LAYOUT

EC NO: 2011/10/20  
DRAWN BY: DRW:INELIN  
CHKD: APPR:

QUALITY SYMBOLS  
▽=0  
▽=0

GENERAL TOLERANCES (UNLESS SPECIFIED)	
mm	INCH
4 PLACES ± .005	± .0005
3 PLACES ± .005	± .0005
2 PLACES ± .005	± .0005
1 PLACE ± .005	± .0005
ANGULAR ± 2 °	

DRAFT WHERE APPLICABLE  
MUST REMAIN  
WITHIN DIMENSIONS

DIMENSION STYLE	
MM/IN	
DRAWN BY: JOYCE	DATE: 2008/5/30
CHECKED BY: JOANNE	DATE: 2008/5/30
APPROVED BY: MHUANG	DATE: 2011/09/16
MATERIAL NO.	

SCALE	DESIGN UNITS	THIRD ANGLE PROJECTION
	METRIC	☉ □
TITLE: SMB JACK, FAKRA, EDGE MOUNT PCB, 50 OHM SMB-J/PCB		
MOLEX MOLEX INCORPORATED		
DOCUMENT NO. SD-73403-590	SHEET NO. 1 OF 2	

THIS DRAWING CONTAINS INFORMATION THAT IS PROPRIETARY TO MOLEX INCORPORATED AND SHOULD NOT BE USED WITHOUT WRITTEN PERMISSION

13

12

11

10

9

8

7

6

5

4

3

2

1

J

J

I

I

H

H

G

G

F

F

E

E

D

D

C

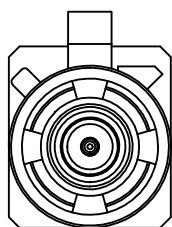
C

B

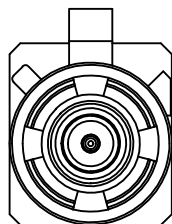
B

A

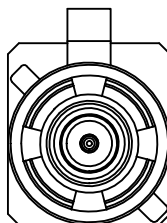
A



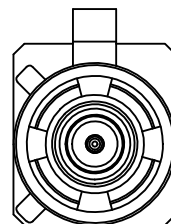
CODE A



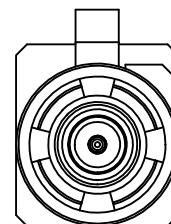
CODE B



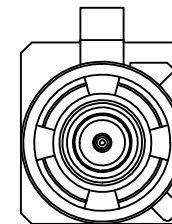
CODE C



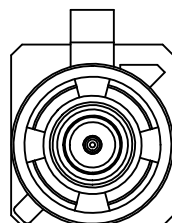
CODE D



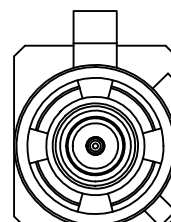
CODE E



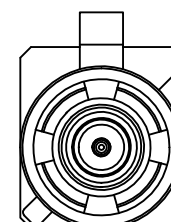
CODE F



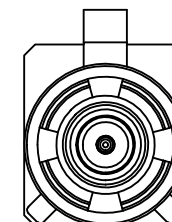
CODE G



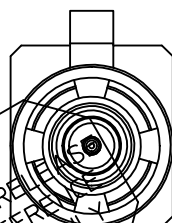
CODE H



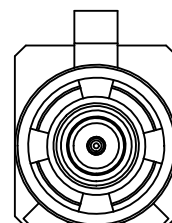
CODE I



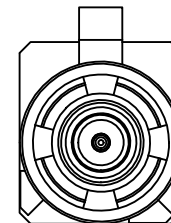
CODE K



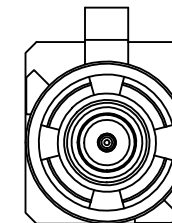
CODE Z



CODE L



CODE M



CODE N

PRE-RELEASE  
REFER TO  
USE ONLY

N	PASTEL GREEN	73403-5913
M	PASTEL ORANGE	73403-5912
L	CARMINE RED	73403-5911
Z	WATER BLUE	73403-5910
K	CURRY YELLOW	73403-5909
I	BEIGE	73403-5908
H	VIOLET	73403-5907
G	GRAY	73403-5906
F	BROWN	73403-5905
E	GREEN	73403-5904
D	BORDEAUXVIOLET	73403-5903
C	BLUE	73403-5902
B	SIGNAL WHITE	73403-5901
A	BLACK	73403-5900
KEYING CODE	COLOR	PART NO.

SEE SHEET 1  
EC NO: DRWNLIN 2011/0/20  
CHKD: APPR:  
A1

QUALITY SYMBOLS  
▽=0  
▽=0

GENERAL TOLERANCES (UNLESS SPECIFIED)  
mm INCH  
4 PLACES ± --- ± ---  
3 PLACES ± --- ± ---  
2 PLACES ± --- ± ---  
1 PLACE ± --- ± ---  
ANGULAR ± 2 °  
DRAFT WHERE APPLICABLE MUST REMAIN WITHIN DIMENSIONS

DIMENSION STYLE MM/IN  
DRAWN BY DATE  
JOYCE 2008/5/30  
CHECKED BY DATE  
JOANNE 2008/5/30  
APPROVED BY DATE  
MHUANG 2011/09/16  
MATERIAL NO.  
SIZE C  
SEE TABLE

SCALE 6:1  
DESIGN UNITS METRIC  
THIRD ANGLE PROJECTION  
TITLE  
SMB JACK,FAKRA, EDGE MOUNT PCB, 50 OHM SMB-J/PCB  
MOLEX INCORPORATED  
DOCUMENT NO. SD-73403-590  
SHEET NO. 2 OF 2  
THIS DRAWING CONTAINS INFORMATION THAT IS PROPRIETARY TO MOLEX INCORPORATED AND SHOULD NOT BE USED WITHOUT WRITTEN PERMISSION

12

11

10

9

8

7

6

5

4

3

2

1