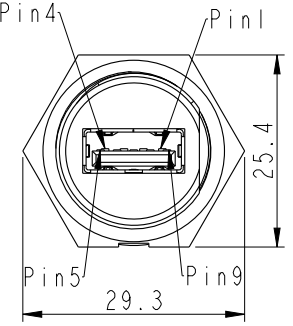
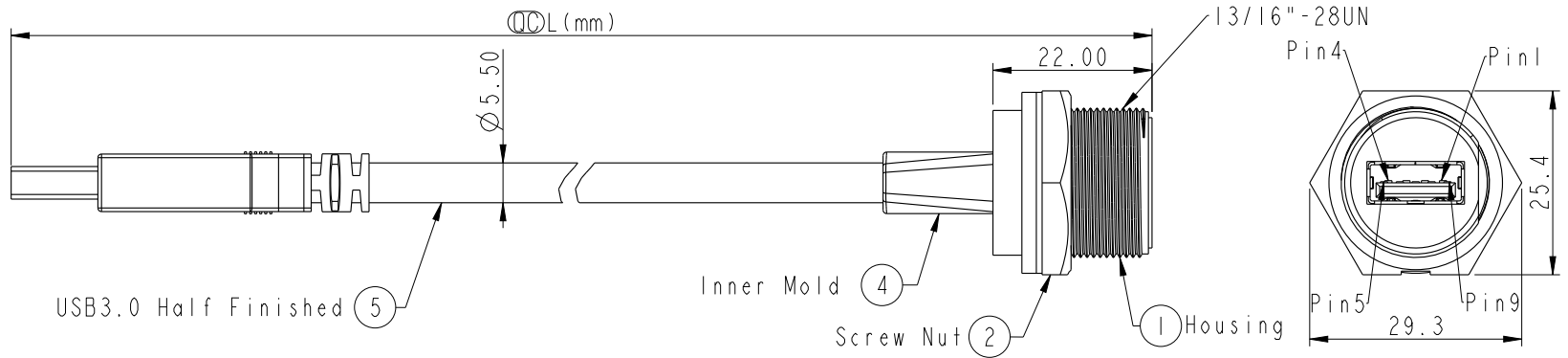
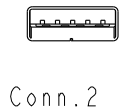
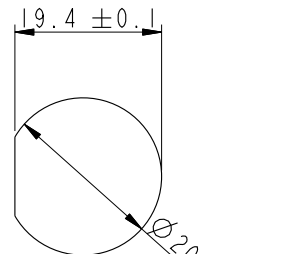


ALTW
CONFIDENTIAL
 2013-03-07
R&D DEPT.

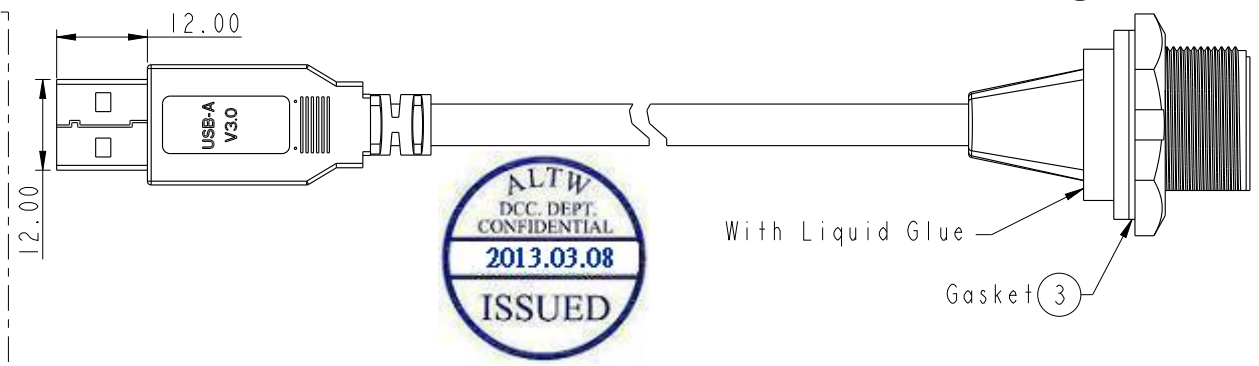
REV.	ECN NO.	DATE	SIGN	DESCRIPTION
A	Initial Release	2013-03-07	Tom_gu	Change Rev.1 To Rev.A



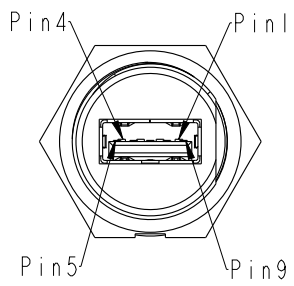
Conn.1
 Waterproof Rate: IP67



Recommended Panel Cut-Out



UA-30PMF-SD7BXX
 XX : 100~300mm
 10 : 100mm
 30 : 300mm
 Cable Length(L): 100~300mm



Pin Assignments Front View

Shield	Braid	編織	Shield	
9	Orange	28AWG	橙	Twist
8	Purple	28AWG	紫	
7	Drain	28AWG	地線	Twist
6	Yellow	28AWG	黃	
5	Blue	28AWG	藍	Twist
	Drain	28AWG	地線	
4	Black	28AWG	黑	Twist
3	Green	28AWG	綠	
2	White	28AWG	白	Twist
1	Red	28AWG	紅	
Conn.1	Wire Color		Conn.2	
	Pin Out			

- Note:
- * Ⓞ Important Dimension.
 - * Housing: ABS, Black
 - * Screw Nut: Nylon+GF, Black
 - * Gasket: Silicone, Gray
 - * Jack: USB3.0-A Female Solder
 - * Cable: USB 3.0, (1P*28#+D+Al/My)*2+1P*28#+2C*28#+F+Al+B, PVC Jacket, UV Resistant, OD=5.5mm, Black
 - * Cable Length Tolerance: 100~300mm:±15mm
 - * Use with waterproof cap or dust cap
Panel Thickness max: 2.8mm
 - * Use without waterproof cap or dust cap
Panel Thickness max: 4.0mm
 - * All of Drain twisted together.

UNIT:mm

TOLERANCE
 .X ±0.25
 .XX ±0.1
 .XXX ±0.05
 ANGLES ±1

TITLE USB3.0 Male A Type			
SCALE 1:1	SIZE A4	SHEET 1 OF 1	
REV. A	WC-REV. A.2	Ⓞ: Inspection item	

Amphenol LTW
 安費諾亮泰企業股份有限公司

ITEM NO.	DRAWN BY Tom_gu	DATE 2013-03-07
DWG NO. UA-30PMF-SD7BXX	CHECKED BY Kevin_Wang	DATE 2013-03-07
CUSTOMER ALTW	APPROVED BY Victor	DATE 2013-03-07

THIS DOCUMENT IS SUBJECT TO CHANGE WITHOUT NOTICE. IT IS CONFIDENTIAL AND A PROPERTY OF AMPHENOL LTW. DISCLOSURE TO THIRD PARTY HAS TO BE AUTHORIZED BY AMPHENOL LTW.