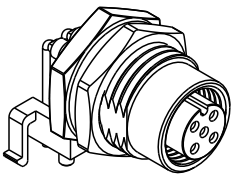
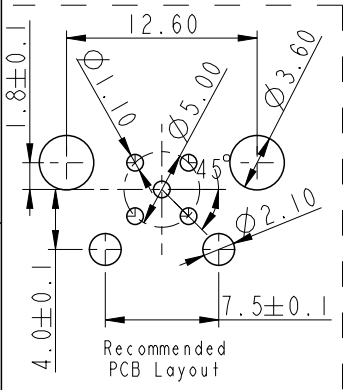
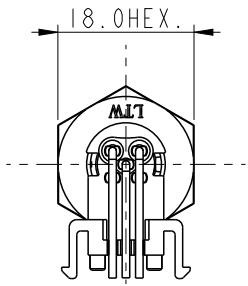
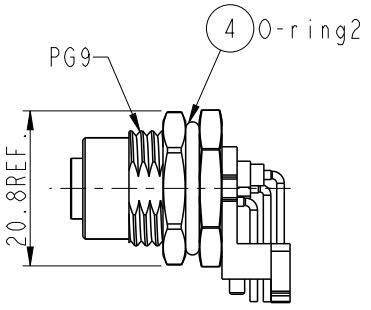
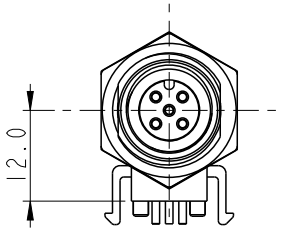


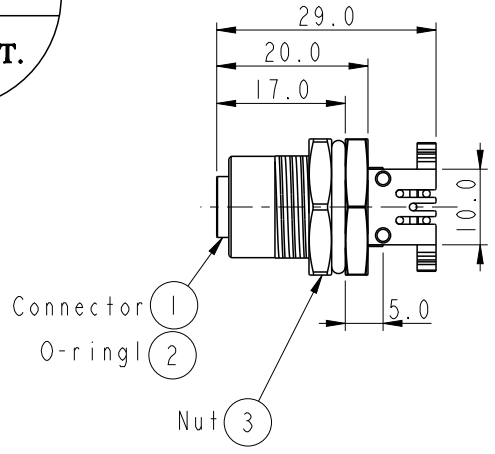
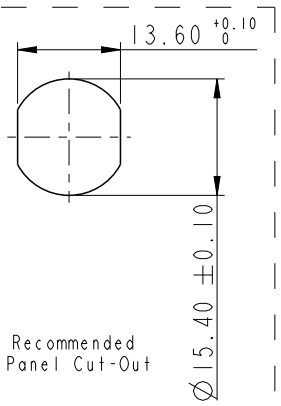
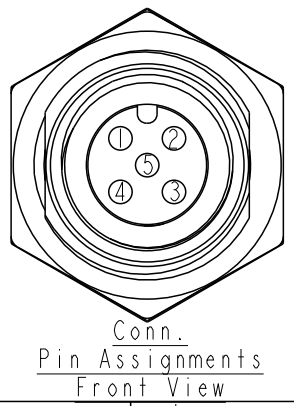
REV.	ECN NO.	DATE	SIGN	DESCRIPTION



ALTW DCC.  
2012.06.13  
ISSUED



ALTW  
CONFIDENTIAL  
2012-06-07  
R&D DEPT.



- Note:
- \*  $\varnothing$  Important Dimension To Check.
  - \* Waterproof Rate: IP68  
IP68: 1M Depth Of Water In 24hours (防水等級: IP68 )  
(IP68: 1 米水深 24 小時)
  - \* Connector: Nylon+GF, Black
  - \* Female Pin: Copper Alloy, Gold Plated
  - \* Shell: Zinc Alloy, Nickel Plated.
  - \* Nut: Zinc Alloy, Nickel Plated.
  - \* O-ring1: Silicon, Gray
  - \* O-ring2: Silicon, Black
  - \* Boardlock: PBT+PC, Black
  - \* For Panel Thickness Max. 4.5mm
  - \* For PCB Thickness Max. 1.6mm

UNIT: mm		
TOLERANCE	.X ±0.25	
	.XX ±0.1	
	.XXX ±0.05	
ANGLES	±1°	

TITLE SENSOR, M12, 90° PANEL 5PIN FCONN FPIN			
SCALE 1:1	SIZE A4	SHEET 1 OF 1	
REV. A	WC-REV. A.3	QC: Inspection item	

**Amphenol LTW**  
安費諾亮泰企業股份有限公司

ITEM NO 12-05PFFR-SF8001	DRAWN BY Tao-cheng	DATE 2012-06-07
DWG NO 12-05PFFR-SF8001	CHECKED BY Jimmy	DATE 2012-06-07
CUSTOMER ALTW	APPROVED BY Victor	DATE 2012-06-07

THIS DOCUMENT IS SUBJECT TO CHANGE WITHOUT NOTICE. IT IS CONFIDENTIAL AND A PROPERTY OF Amphenol LTW. DISCLOSURE TO THIRD PARTY HAS TO BE AUTHORIZED BY Amphenol LTW.

A B C D E F