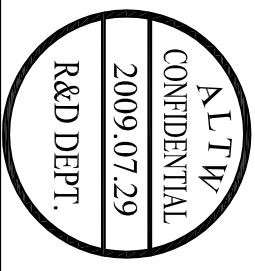
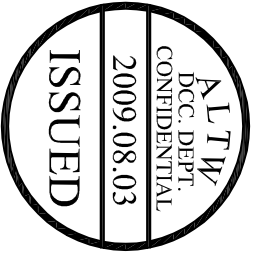
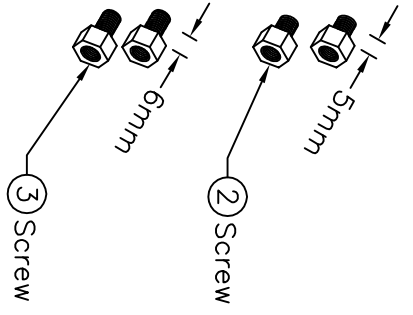
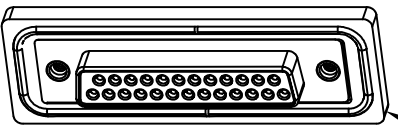
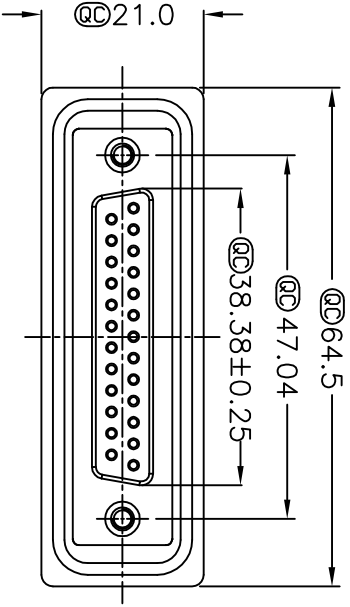
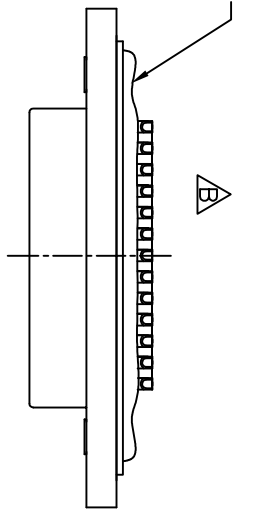
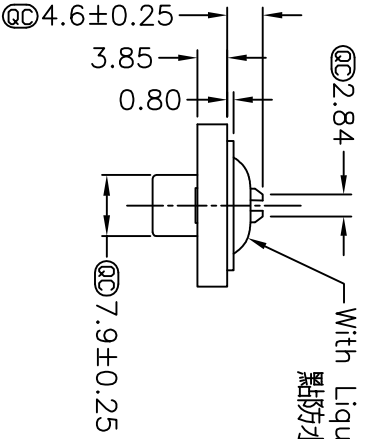


REV. B	EGR. NO. LEN-980001	DATE 2009/07/29	SIGN Vicky	DESCRIPTION Remove Pin Dim.
--------	---------------------	-----------------	------------	-----------------------------

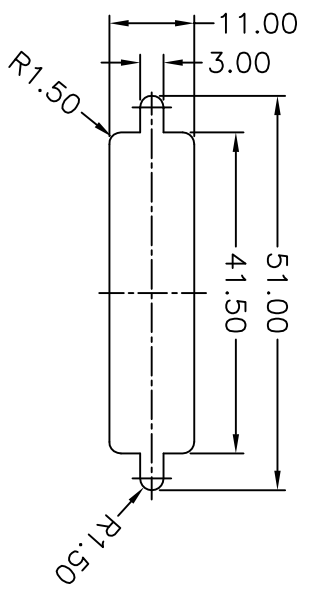


- Note:
- * Ⓞ Important Dimension.
 - * Waterproof Rate: IP68
 - * IP68: 1M of depth of water 24 hours (防水等級: IP68)
 - * (IP68: 1 米水深 24 小時)
 - * Do Mating Test After Glued 點膠後, 須作對插測試
 - * Housing: Nylon+GF, Black.
 - * Connector: PBT, Black.
 - * Female Pin: Copper Alloy, Gold Plated.
 - * Ring: Silicone, Light Blue.
 - * Screw: Copper Alloy, Nickel Plated, #4-40 UNC.
 - * Applicable Wire Range: 22AWG-26AWG.
 - * 適用電線範圍: 22AWG-26AWG

Panel Thickness
面板厚度

Screw L=5.0 For Panel Thickness
Under 1.2mm
適用板厚為 1.2mm 以下

Screw L=6.0 For Panel Thickness
Between 1.2~2.0mm
適用板厚為 1.2~2.0mm



Recommended Panel Cut-Out
建議挖孔尺寸

UNIT: mm	TITLE		ITEM NO	DRAWN BY	DATE
TOLERANCE	D-SUB Conn.		SDB-25PFFS-SL8001	Vicky	2009/07/29
X ±0.25	Panel Screw		DMG NO	CHECKED BY	DATE
XX ±0.1	DB25P F Conn. F Pin		SDB-25PFFS-SL8001	Rita	2009/07/29
XXX ±0.05	Free		CUSTOMER	APPROVED BY	DATE
ANGLES ±1°	SCALE		ALTW	Luke	2009/07/29
	REV. B				
	SIZE A4				
	SHEET 1 OF 1				
	Ⓞ : Inspection Item				

Amphenol LTW

安費諾亮泰企業股份有限公司