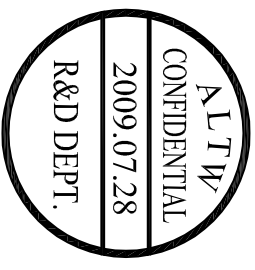
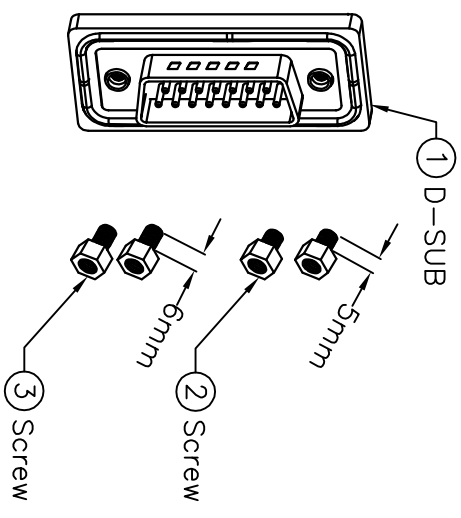
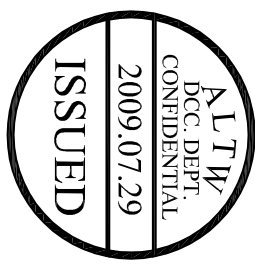
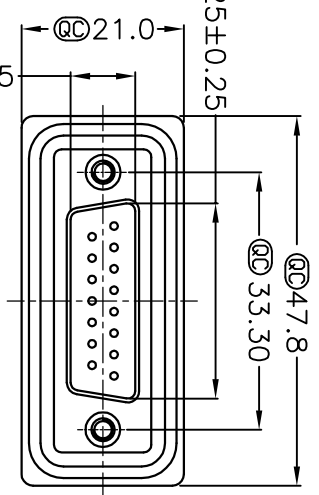
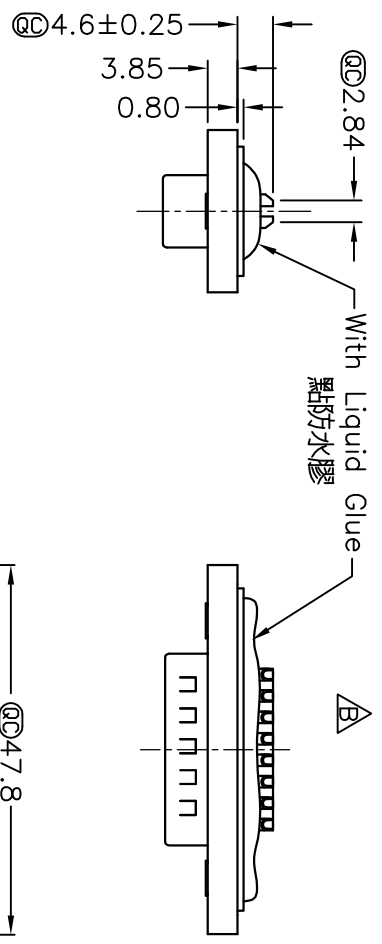
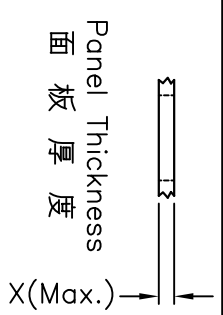


1	2	3	4	5	6	7	8	
				REV. B	EGN NO. LEN-970141	DATE 2009/07/28	SIGN Vicky	DESCRIPTION Remove Pin Dim.

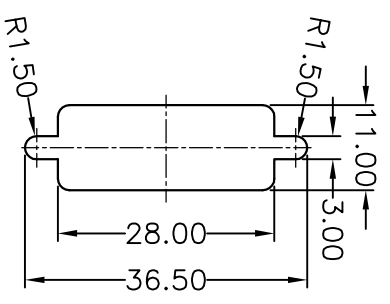


- Note:
- * ④Important Dimension.
 - * Waterproof Rate:IP68
 - * IP68:1M of depth of water 24 hours (防水等級:IP68)
 - * (IP68:1 米水深24 小時)
 - * Do Mating Test After Glued 點膠後, 須作對插測試
 - * Housing:Black,Nylon+GF.
 - * Connector:Black,PBT.
 - * Male Pin:Copper Alloy,Gold Plated.
 - * Ring:Light Blue,Silicone.
 - * Screw:Copper Alloy,Nickel Plated,#4-40 UNC.
 - * Applicable Wire Range:22AWG-26AWG.
 - * 適用電線範圍:22AWG-26AWG



Screw L=5.0 For Panel Thickness Under 1.2mm
適用板厚為 1.2mm 以下

Screw L=6.0 For Panel Thickness Between 1.2~2.0mm
適用板厚為 1.2~2.0mm



Recommended Panel Cut-Out
建議挖孔尺寸

UNIT:mm		TITLE	D-SUB Conn. DB15P M Conn. M Pin	ITEM NO	SDB-15PMS-SL8001	DRAWN BY	Vicky	DATE	2009/07/28
TOLERANCE	±0.25 XX ±0.1 XXX ±0.05 ANGLES ±1°	SCALE	Free	DWG NO	SDB-15PMS-SL8001	CHECKED BY	Rita	DATE	2009/07/28
REV.	B	SIZE	A4	CUSTOMER	ALTW	APPROVED BY	Luke	DATE	2009/07/28
			SHEET	1	OF	1			
			④	Inspection	Item				