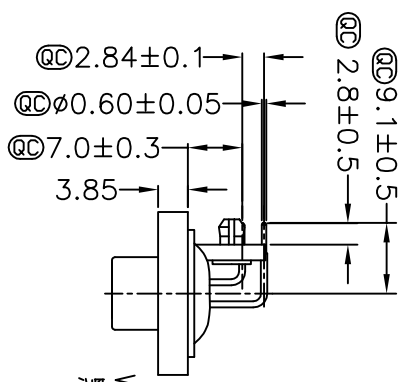
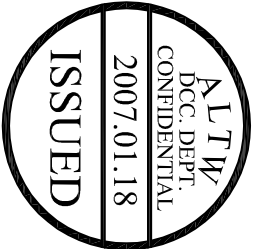
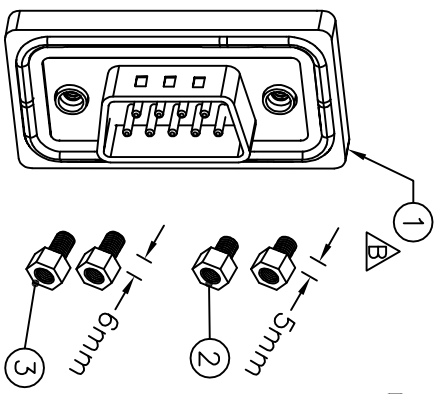
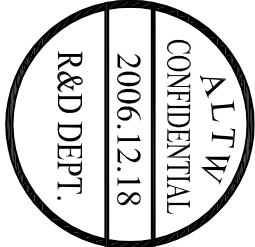
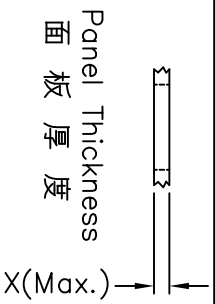
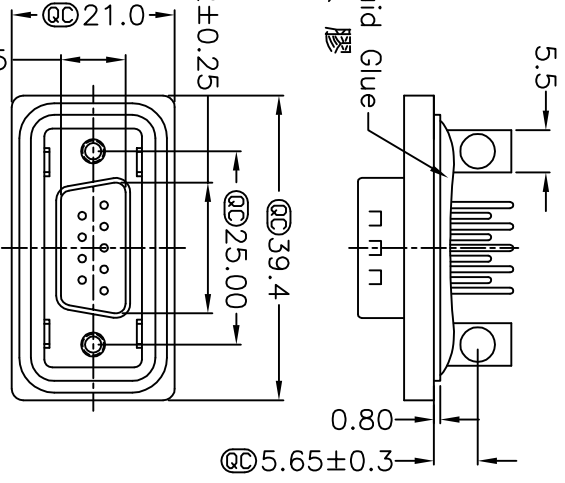


1	2	3	4	5	6	7	8
				REV. A	ECON. NO.	DATE	SIGN
				B	LE3-710075	2006/12/18	DongYali
						DESCRIPTION	Released Rev.A
							Move 0-Ring To ZSE00100717

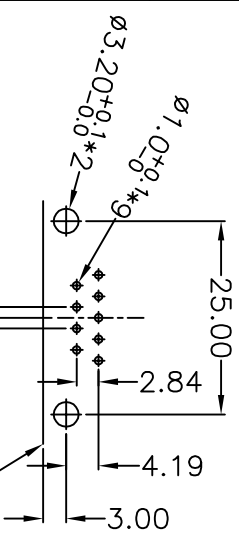


With Liquid Glue  
點防水膠



Screw L=5.0 For Panel Thickness Under 1.2mm  
適用板厚為 1.2mm 以下

Screw L=6.0 For Panel Thickness Between 1.2~2.0mm  
適用板厚為 1.2~2.0mm



9 Pin Male Connector  
PCB Pin Layout  
Max. Distance From The Circuit Board Edge  
距離 PCB 板邊最大尺寸

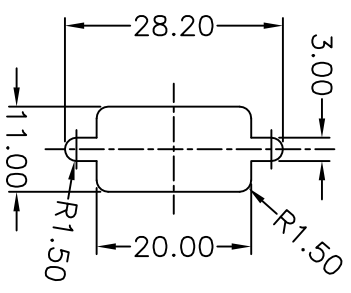
UNIT:mm	TITLE	
TOLERANCE	DB9/M Conn, Panel, PCB 90° Add Board Lock	
X ±0.25	SCALE	SHEET
XX ±0.1	Free	1 OF 1
XXX ±0.05	REV. B	SIZE A4
ANGLES ±1°	@@ : Inspection Item	

**Amphenol LTW**  
安費諾亮泰企業股份有限公司

ITEM NO	SDB-09PMP-SB8001
DWG NO	SDB-09PMP-SB8001
CUSTOMER	ALTW

DRAWN BY	DongYali	DATE	2006/12/18
CHECKED BY	Simon	DATE	2006/12/18
APPROVED BY	Max	DATE	2006/12/18

- Note:
- \* @ Important Dimension.
  - \* Waterproof Rate : IP68
  - \* IP68:1M of depth of water 24 hours (防水等級 IP68)
  - \* (IP68:1米水深 24小時)
  - \* Do Mating Test After Glued 點膠後, 須作對插測試
  - \* HD-SUB Conn. : Black Core, PBT
  - \* Plastic Jacket : Black, Nylon+GF
  - \* Pin: Copper Alloy , Gold Plated
  - \* Ring: Light Blue, Silicone
  - \* Screw: Copper Alloy, Nickel Plated, #4-40 UNC
  - \* The 90° Board Lock Needs To Connect The Iron Shell L 型支架需接鐵殼



Recommended Panel Cut-Out  
建議挖孔尺寸