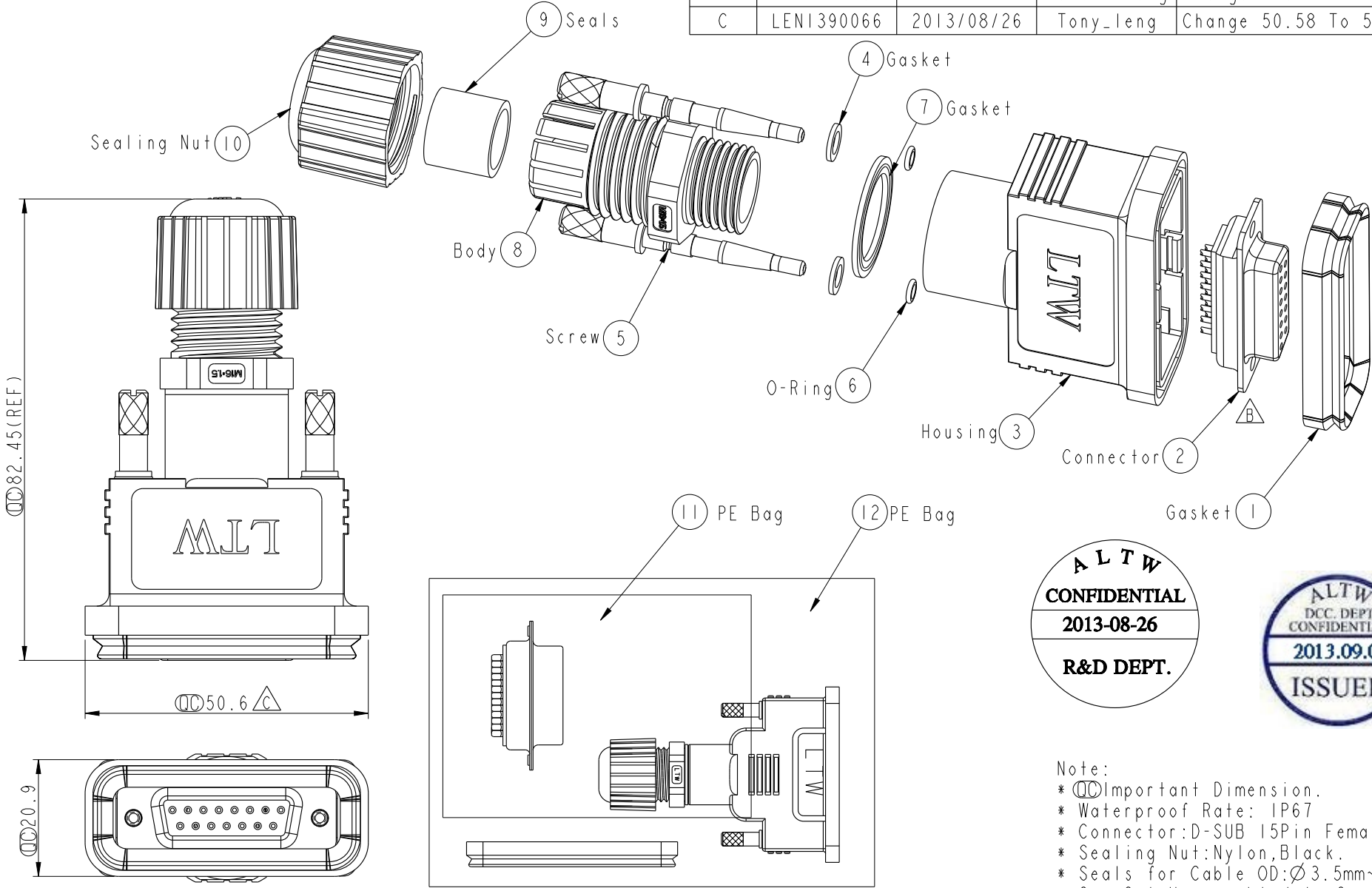


REV.	ECN NO.	DATE	SIGN	DESCRIPTION
B	LEN1280093	2012/08/23	Jason Jiang	Change View
C	LEN1390066	2013/08/26	Tony_leng	Change 50.58 To 50.6



ALTW
CONFIDENTIAL
2013-08-26
R&D DEPT.

ALTW
DCC. DEPT.
CONFIDENTIAL
2013.09.03
ISSUED

Note:
 * \varnothing Important Dimension.
 * Waterproof Rate: IP67
 * Connector: D-SUB 15Pin Female.
 * Sealing Nut: Nylon, Black.
 * Seals for Cable OD: $\varnothing 3.5\text{mm} \sim \varnothing 7.0\text{mm}$
 * One Set Unassembled in One PE Bag

UNIT: mm
 TOLERANCE
 $\pm 0.5 \text{ mm}$

TITLE
 D-SUB Conn
 Assy Screw DB15P F Conn F Pin

SCALE 1:1
 SIZE A4
 SHEET 1 OF 1

REV. C
 WC-REV. A.4
 \varnothing : Inspection item

Amphenol LTW
 安費諾亮泰企業股份有限公司

ITEM NO.	DRAWN BY	DATE
SDB-15BFFA-SL7001	Tony_leng	2013-08-26
DWG NO.	CHECKED BY	DATE
SDB-15BFFA-SL7001	Yulong	2013-08-26
CUSTOMER	APPROVED BY	DATE
ALTW	Victor	2013-08-26

THIS DOCUMENT IS SUBJECT TO CHANGE WITHOUT NOTICE. IT IS CONFIDENTIAL AND A PROPERTY OF Amphenol LTW. DISCLOSURE TO THIRD PARTY HAS TO BE AUTHORIZED BY Amphenol LTW.