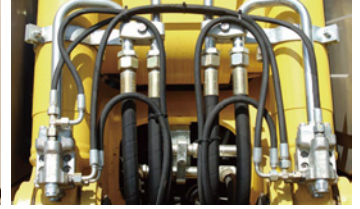


Amphenol Industrial Automation Market



<http://www.amphenolltw.com>



Amphenol LTW

Our History

LTW Technology, established in 1993, is a professional designer and manufacturer of waterproof connectors. In April of 2010, LTW Technology was acquired by Amphenol Group and officially changed its company name to “Amphenol LTW Technology Co., Ltd.”.

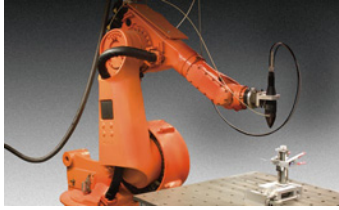
Amphenol LTW actively devotes to various outdoor and industrial applications by successfully developing high-end waterproof connectors to meet strict requirements; also has many worldwide patents and certification such as ISO 14001, ISO 9001 and NMEA 2000. Amphenol LTW is not only a supplier of waterproof connectors but also a solution provider in diversified market segments.

Our Mission

Amphenol LTW is fully committed to fulfill every customer's desire in their interconnection needs. The customized ability and wide-ranging products make us unique from competitors. Furthermore, high standard in product quality and outstanding customer service are to be expected.

- Customized capability for all interconnect solution
- Breakthrough innovation
- High standard in product quality
- Worldwide customer base
- Wide-ranging products for your market segment needs

The world's preferred interconnect solution provider-Amphenol LTW Technology.



Industrial Automation Market

Industrial Automation plays an increasingly important role in the global economy. Not only does this automation increase productivity and reduce cost, it also improves the quality and consistency of products being produced. Sensors in the form of connectors, cord sets, proximity switches act as Control Systems and Devices as they provide reliable connection in the key industrial machinery and factory automation markets.

Generally, Amphenol LTW's M-Series is perfectly suitable for industrial equipment, machinery, and involving all types of sensors and actuators in automation applications that offers safety in harsh environmental conditions including corrosion, shock vibration, dust, moisture buildup and extremely adverse installation situations. We offer a variety of high-quality M-Series Sensor Connectors from market standard to highly customized solutions.

Application

Industrial Robots **1** **3** **5** **6**



Industrial lifts **1** **3** **5** **6**



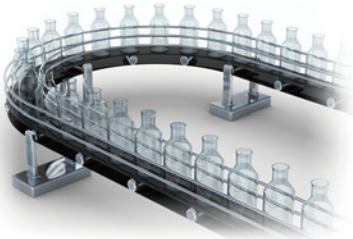
Communication Panels **1** **2** **4** **5**



Packaging **1** **2** **4**



Conveyors **1** **2** **4**



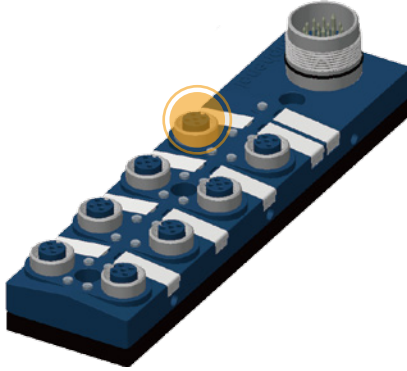
M8/M12 Distribution Boxes



○ T & Y Splitters



○ Receptacle Connectors



○ Field Installable



○ Sensor & Actuator Cables



○ Accessories

↳ Customization Upon Request



Customized Cabling Solutions



High-Grade Connector Inserts

Product Focus

↘ M8 / M12 / 7/8"



- Available in M8 (3P~5P & 8P); M12 (3P ~ 12 in A, B, D & X Codes); Mini 7/8" 5P
 - Compact and rugged design available in IP67/IP68 waterproof
 - Available in **Stamped, Screw-In, PCB and Solder Contacts
 - Panel mounts (**M12 90° PCB), Field Installables & Molded With Cable available
 - Meets industry standards (IEC, NMEA2000, DeviceNet, EtherNet I/P, Profibus & ProfiNet)
 - Operating temperature: -40°C ~ 105°C s according to material designations
 - Hexagonal-Shaped Diecasted Screw Nuts for Cable Assy for easier Tool access
 - PVC, PUR Jackets available for cables (Sun, Oil Resistant & Flame rated)
 - UL/CSA Approval
 - Hybrid Available Upon Request
- **New Products

1

↘ M12-RJ45 Ethernet Adaptor New



- Sealed media based on 4Pin D-Coded M12 connection
- IP68 unmated waterproof (M12 side)
- Rugged Durable construction
- Supports both 100Base T and 1000Base T Ethernet connections
- Fixing Thread: M16* 1.5
- Operating temperature: -25°C ~ +90°C
- Available in M12 Male and Female Connections, straight and right angle versions
- UL/CSA Approval (Available Soon)

2

↘ RJ45



- Screw Threaded or Lock Bayonet Type
- IP67/IP68 mated and unmated waterproof
- Panel mounts, Molded With Cable & Field Installable available
- Shielded & Unshielded versions
- Fast connectivity Networking in Harsh environments
- IDC, RJ Jack in 180 & 90deg., Terminal Block and Cable terminated
- Meets industry standards (Ethernet I/P, ProfiNet)
- UV Resistant
- Operating temperature: -25°C ~ +90°C

3

Accessories

1

4



T Cable

1

4



T Adaptor

1

4



I Adaptor

1

4



Y Adaptor

1

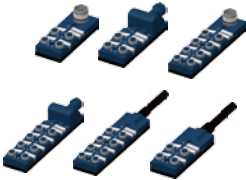
4



M12 Cap-Screw

Product Focus

Passive Distribution boxes New



- Connection of sensors and actuators using M12 5Pin Conn or M8 3P/4P Conn
- Modularity: M8 & M12 in 4 or 8Ports in pre-wired homerun cable, plug-in terminals, M12, M16 & M23 plug connection
- Assembly Compatibility (drilling holes identical to other manufacturers, allow easy exchanging)

- IP67 Unmated Waterproof Rating
- With LEDs for power and sensor trigger indication
- Compact design saves space
- Operating temperature: -25°C ~ +90°C
- UL/CSA Approval (Available Soon)

4

USB



- Screw Threaded or Lock Bayonet Type
- USB A, USB B and Mini USB
- IP67/IP68 unmated waterproof
- Panel mounts, Molded With Cable available

- UV Resistant
- Operating temperature: -20°C ~ +80°C
- Easy & simple connection structure
- PnP – plug and play
- Master/Slave framework

5

D-SUB



- Standard D-Sub (9P~50P), High Density D-Sub (15P~78P) and Mixed Options Available
- Panel mounts, Molded With Cable & Field Installable available
- Various Connection types such as hand solder, wire wrap, straight and angled PCB, with and without boardlock, and flat cables

- High Reliability for Harsh Environment
- IP67/IP68 waterproof
- Special Latches instead of thumb screws available
- Operating temperature: -40°C ~ +105°C

6

Accessories



RJ45 & USB Cap



Box



Box



D-sub Cap



D-sub Joiner

Amphenol LTW Technology Co., Ltd.

9F., No.657-12, Zhongzheng Rd., Xinzhuang Dist., New Taipei
City 242, Taiwan
Telephone: +886-2-29085626 Fax: +886-2-29029787
www.amphenolltw.com

CNC Factory

No.10, Shutan St., Shulin Dist., New Taipei City 238, Taiwan

Kunshan Factory

No. 62 Da Tung Road, Peng Lang Street, Kunshan City ,
Jiangsu Province, China
Telephone: +86-512-5761-0501
Fax: : +86-512-5761-0515

For further information, please contact :

Global: **Jo-anne De Guzman-Ong** (Business Development Manager)
Email: jo-anne_deguzman@ltw-tech.com